

Increasing resilience in Scotland's planted forests

Bruce Nicoll, Bill Mason (Forest Research)
and
John Hair (Forestry Commission Scotland)

Climate variable

Gradual Changes

- Increasing temperature
- Changing rainfall patterns

Extreme Events

- Flooding
- Drought
- Storms/wind

Impact on Forestry

- Increased stress & vulnerability
- Drought (East Scotland)
- Wind Damage
- Landslides
- Fire
- Novel combinations of pests, pathogens & hosts

Upland Scotland 100 years ago: <5% forest



Scotland

20th Century change in forest cover

% Woodland Cover

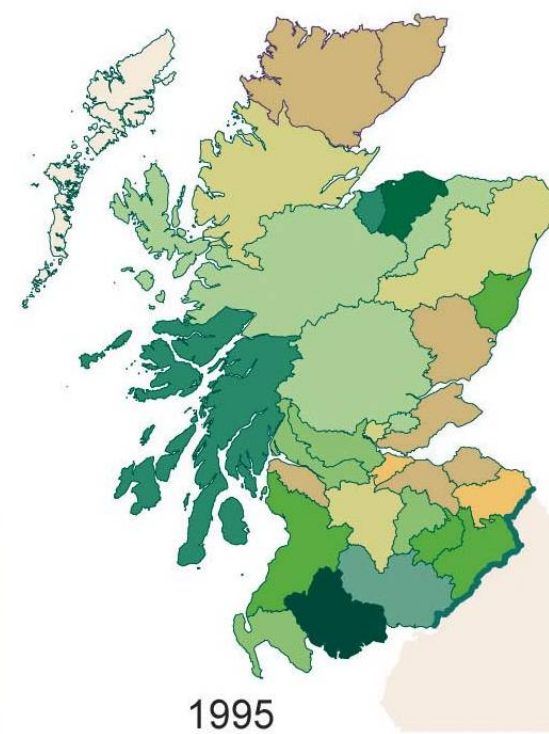
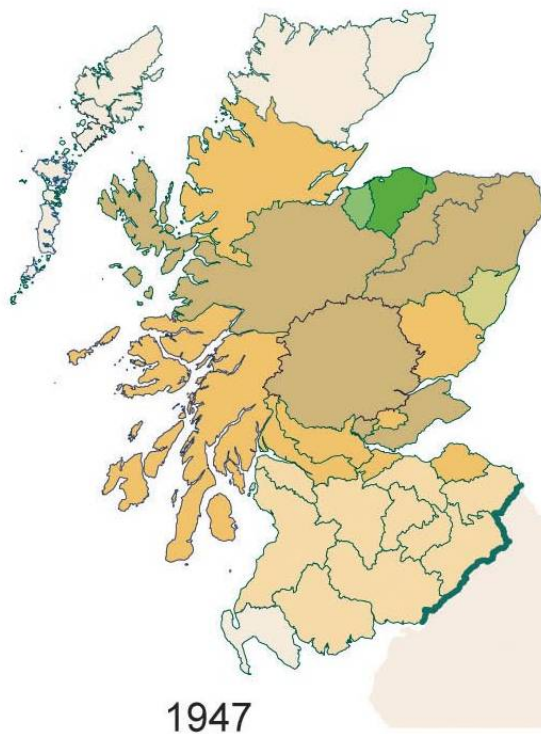
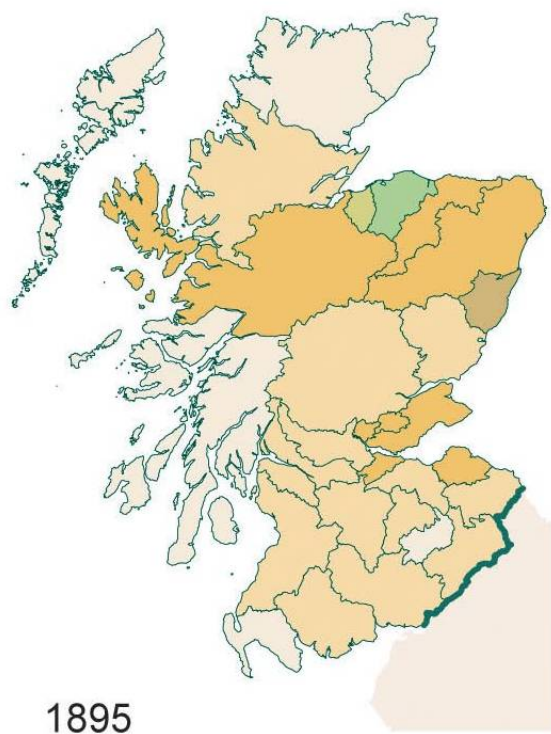
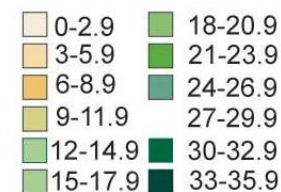
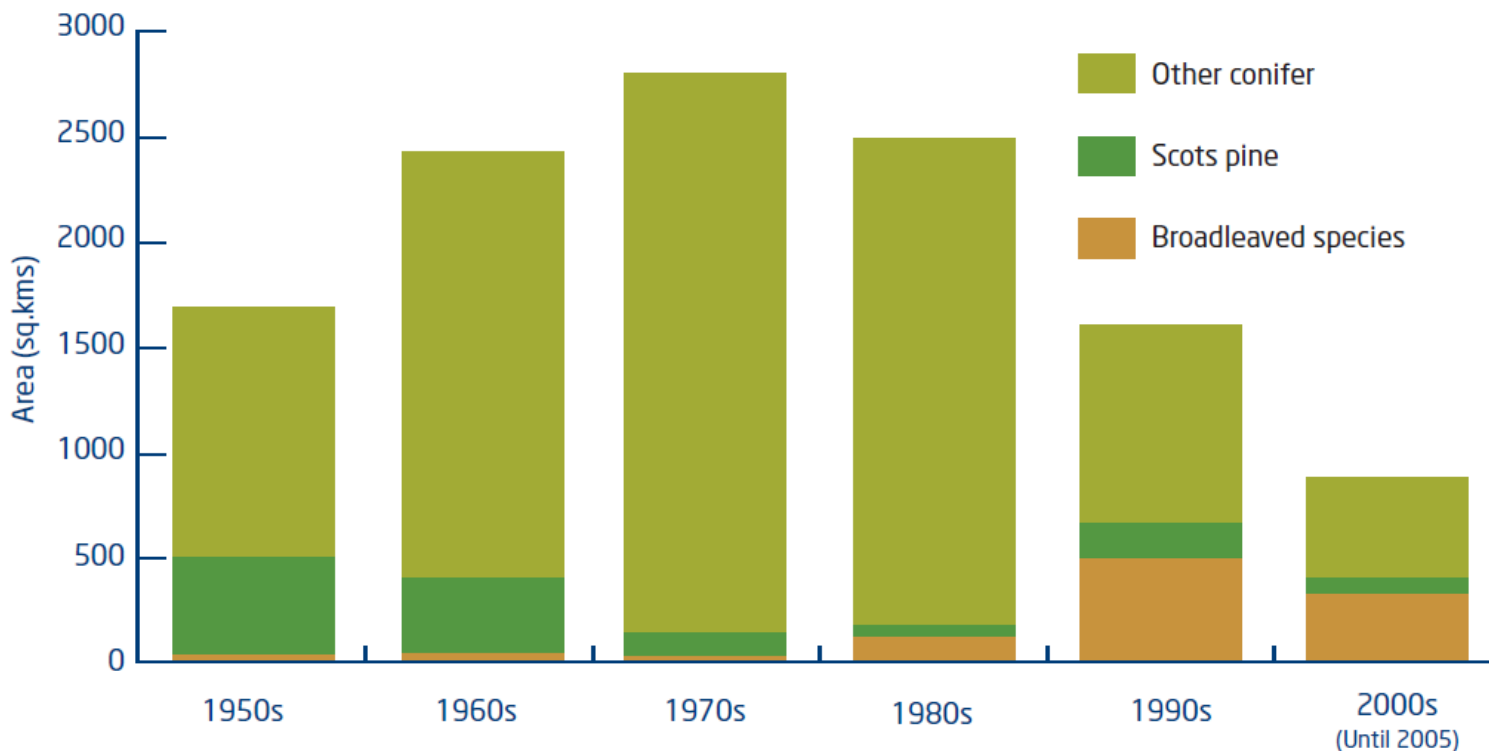
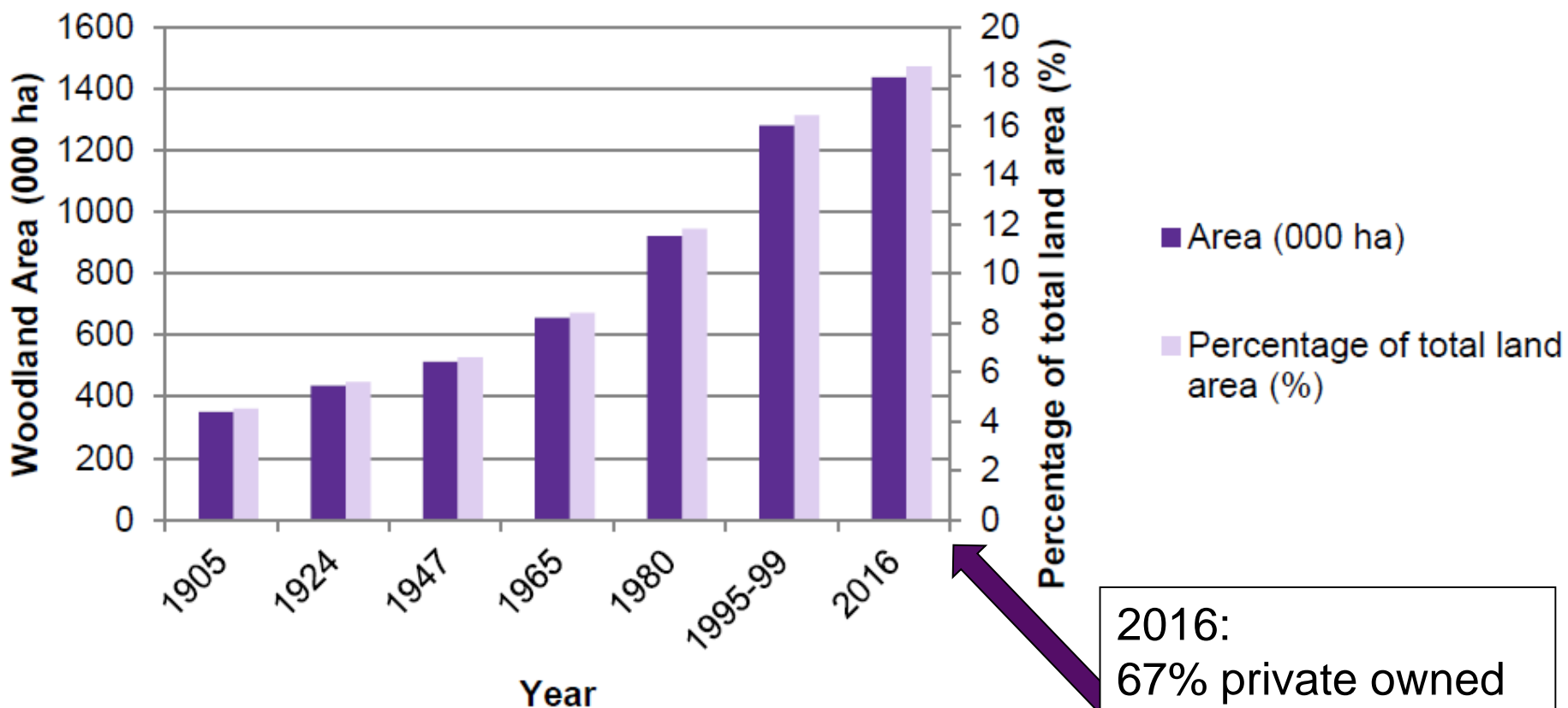


FIGURE 1: Planting and Regeneration

Graph by decades since 1950s showing proportion of broadleaves, Scots pine and other conifers (Final column [2000's] is for 5 years only).

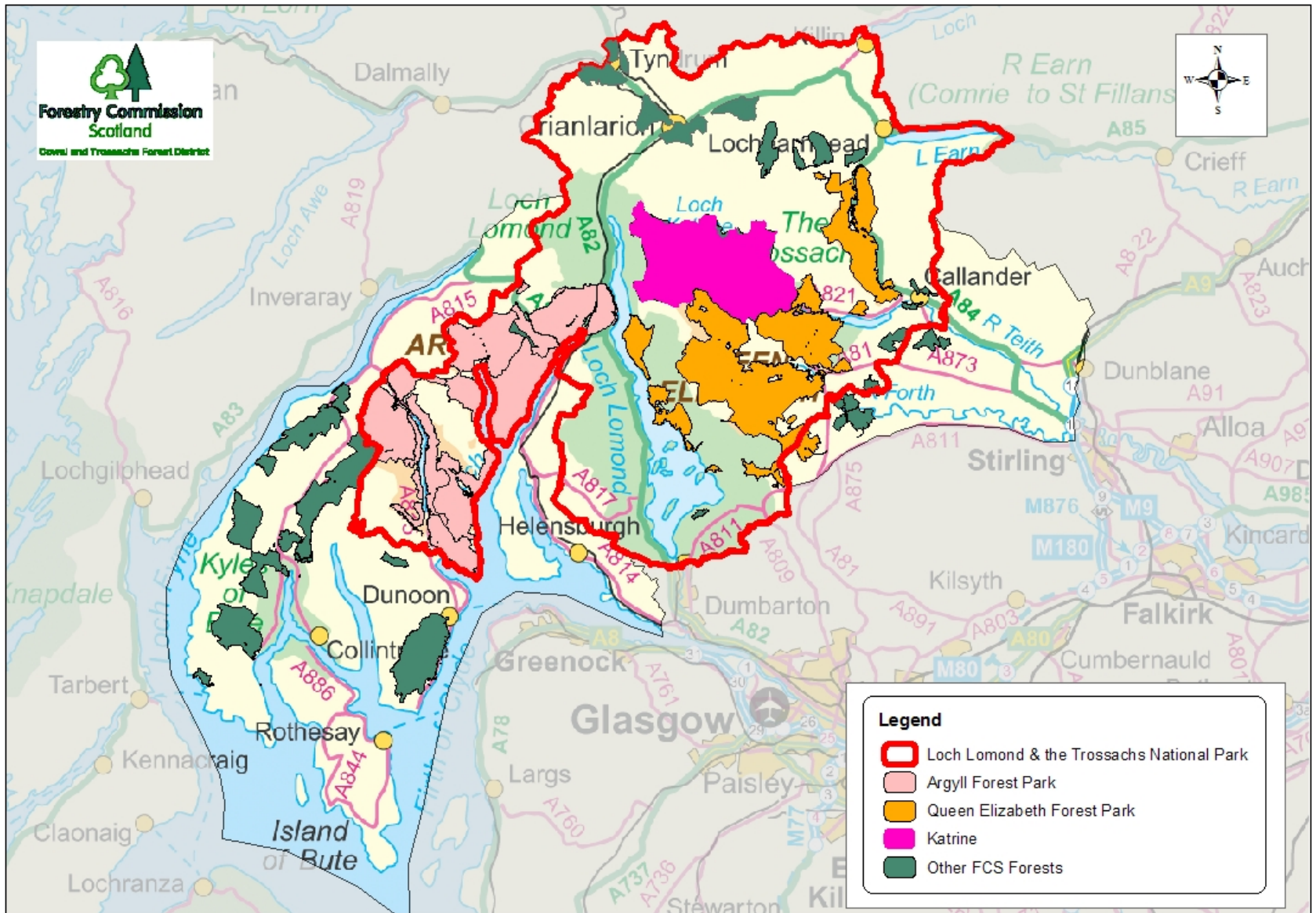


Scotland's forest area



2016:
67% private owned
74% conifers

Scottish Government objective is to increase cover to 25% by the 2nd half of this century. This will require 650 000 ha of new forest.



Queen Elizabeth Forest Park

1993



Queen
Elizabeth
Forest Park

Restructuring



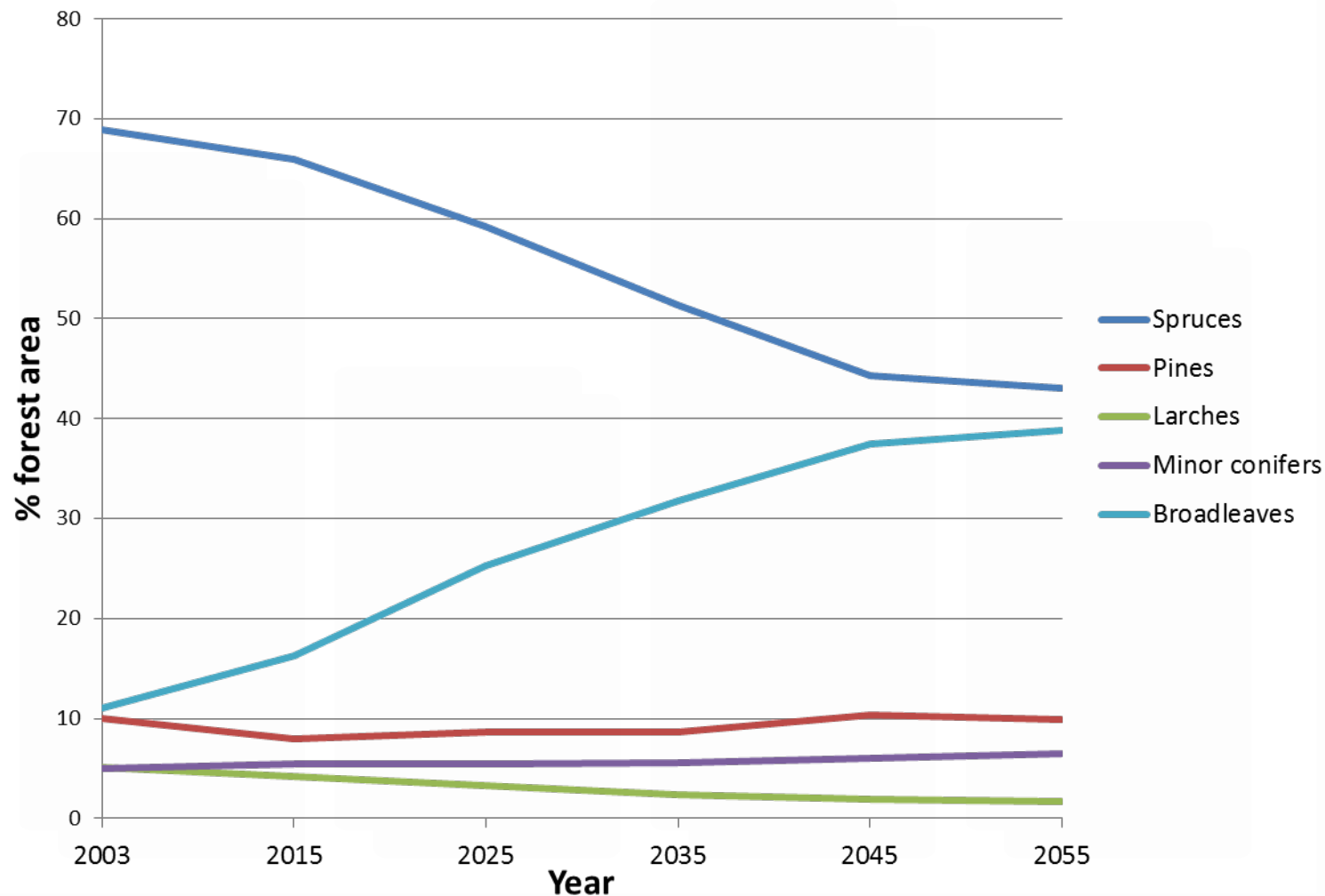
Queen Elizabeth Forest Park

Demonstration forest





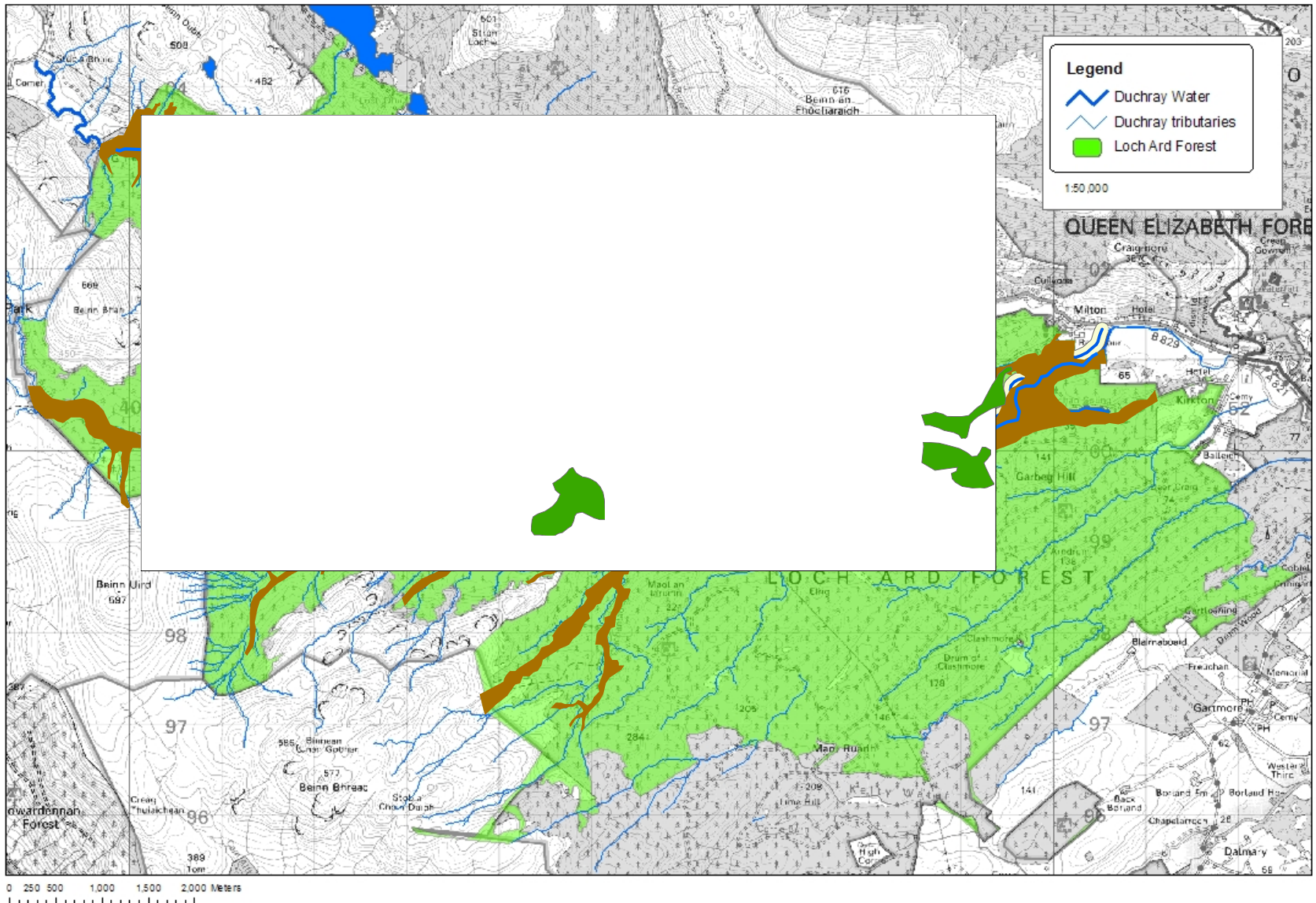
Queen Elizabeth Forest Park – East Loch Ard Species groups - Change in area over time



Duchray Water
Queen Elizabeth
Forest Park

1993





Duchray Water Queen Elizabeth Forest Park

Riparian zone





Continuous Cover Forestry
10% of forest



Mature spruce in the CCF area



get some tree-time this Spring

Want to feel 40 feet tall?



www.goape.co.uk

2007 Opening Times

Provisional opening date end of April - 2nd November (see website for updates) Plus weekends throughout November

Prices

Gorillas (18 years plus) £25.00
Baboons (10 - 17 years) £20.00
Discounts for schools (see website for details)

Booking

Pre-Booking is essential to avoid disappointment
Book online at www.goape.co.uk
(or call 0870 428 2710 - a £1 booking fee will be charged on telephone bookings)
Debit or credit card required



Forestry Commission Scotland Parking Charges

Cars, minibuses and coaches: £2.00
(Prices, opening times, car parking charges and other conditions may change without notice)

Go Ape UK Locations

- 1 High Lodge Forest Centre, Thetford Forest, Suffolk
- 2 Grizedale Forest, The Lake District
- 3 The Look Out, Swinley Forest, Berkshire
- 4 Moors Valley Country Park, near Ringwood
- 5 Sherwood Pines Forest Park, Nottinghamshire
- 6 Mollards Pike, Forest of Dean, Gloucestershire
- 7 Delamere Forest, Cheshire
- 8 Bedgebury Forest, Kent **New!**
- 9 Poole's Cavern, Buxton, Derbyshire **New!**
- 10 Queen Elizabeth Forest Park, Stirlingshire **New!**
- 11 Alice Holt Woodland Park, Farnham, Surrey **New!**
- 12 Dalby Forest, North Yorkshire **New!**

In association with Forestry Commission Scotland

Win Go Ape tickets

Sign up for our e-newsletter and get our regular special offers and latest news. When you sign up you'll go into a free monthly draw with the chance to win four Go Ape tickets. Register at www.goape.co.uk/win
Full draw rules are available at www.goape.co.uk/prizedraws

Directions to Go Ape, Queen Elizabeth Forest Park Aberfoyle, Stirlingshire, Scotland.

From Glasgow follow the A81 north to Aberfoyle. From Stirling follow the A84(T), A873 then A81 west to Aberfoyle. From Callander follow the A81 south to Aberfoyle, or for a more scenic route the A821 via the Trossachs. Go Ape is located at the David Marshall Lodge Visitor Centre, a mile north of Aberfoyle on the A821 (Dukes Pass) in the Loch Lomond & The Trossachs National Park.

Please allow plenty of time for your journey.



New for 2007

Queen Elizabeth Forest Park, Aberfoyle, Stirlingshire

www.forestry.gov.uk/fr/AdaptationVideos



5 short films showing how climate change might affect Scotland's forests and how we can increase resilience to climate change threats

Climate Ready Forestry Workshops: Queen Elizabeth Forest Park

Practitioner stories, Discussion sessions, Updates from experts, Attended by public & private sector forest managers, policy makers, scientists

- Preparing for the expected
- Adaptation Stories
- Living with pests and diseases
- Species diversification
- Flood, landslide and wind risks



Scotland's centre of expertise connecting climate change research and policy





Thanks to:
Kate Beauchamp and Tom Locatelli, FR
Forestry Commission Scotland
and
ClimateXChange
www.climatexchange.org.uk