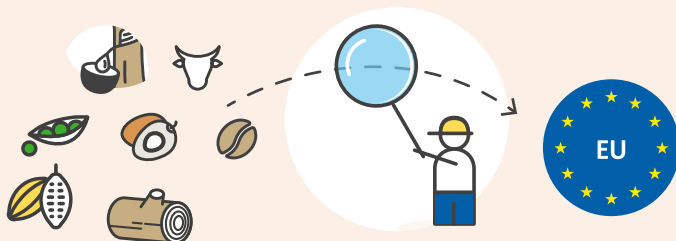



# Overview of some commonly used mobile apps for collecting geolocation information

- ▶ **Under the EU Deforestation Regulation (EUDR), geolocation information is a key requirement** to ensure traceability and demonstrate that commodities (cocoa, rubber, coffee, cattle, timber, palm oil, and soy) placed on the EU market are not linked to deforestation. EU importers must provide precise coordinates of the plots of land where production took place in their due diligence statement.
- ▶ **As a result, collecting geolocation information has become an essential task** that directly engages cooperatives and smallholder farmers who produce commodities within the scope of the EUDR. Mobile applications are available that allow for simple information collection in the field, including offline.



	<p>This overview presents some of the <b>most commonly used free apps</b>, designed for non-technical users with minimal training:</p>	<b>GeoRoots</b>	<b>KoboCollect</b>
		<b>Ground</b>	<b>TerraTrac</b>
		<b>INATrace</b>	<b>QField</b>

It focuses on their key features, user-friendliness, and relevance for supporting the collection of geolocation information by extension officers and cooperatives.



<b>GeoRoots</b>	
<b>Ease of access (what kind of tool needed, registration, etc.)</b>	GeoRoots is a hub of tools to visualize, manipulate and analyse Geojson files. The tools execute entirely within the web browser (e.g., Chrome, Firefox), with no data transmitted to external parties, ensuring the user retains full control. Registration is not required, and the tools can be downloaded to be used offline
<b>List of tools</b>	<b>Available tools are:</b> <ul style="list-style-type: none"> <li>• GeoRoots Prepper — Generate EUDR-compliant GeoJSON from pasted spreadsheet data.</li> <li>• GeoRoots KML — Convert KML files to GeoJSON for EUDR workflows.</li> <li>• GeoRoots Mapper — Visualize and inspect EUDR DDS GeoJSON for quick validation.</li> <li>• GeoRoots Fixer — Read, edit, validate, and repair GeoJSON; map/rename fields to EUDR format.</li> <li>• GeoRoots Merger — Combine multiple GeoJSON files into a single file.</li> <li>• GeoRoots Splitter — Filter, sort, and split GeoJSON by location, property, or count.</li> <li>• GeoRoots Deduplicator — Detect and remove duplicate or overlapping GeoJSON features.</li> </ul>
<b>Languages available</b>	English, French, Spanish, Mandarin, Swahili, and others.
<b>Offline accessibility</b>	All tools can be downloaded and used locally.
<b>Availability and cost</b>	Tools are open source and free of charge.
<b>Developers/hosts Data ownership and accessibility</b>	GeoRoots is developed with the support of Bailies Coffee Roasters.
<b>Link</b>	<a href="https://georoots.eu/">https://georoots.eu/</a> <a href="https://github.com/georoots">https://github.com/georoots</a>

<b>Ground</b>	
<b>Ease of access (what kind of tool needed, registration, etc.)</b>	An email address is needed to register (go to <a href="https://openforis.org/solutions/ground/">https://openforis.org/solutions/ground/</a> ) and an Android mobile phone to download the app.
<b>Possibility of adding information other than geolocation data (land ownership, production quantity, etc.)</b>	During survey setup, it is possible to add questions about any other types of information (such as land tenure, type of production, or photo of the plot) that the enumerator will have to answer when collecting geodata.
<b>Languages available</b>	English, French, Spanish and Portuguese.
<b>Offline accessibility</b>	Yes, robust offline support (data automatically synchronised) and offline map imagery.
<b>Availability and cost</b>	Open source, free.
<b>Developers/hosts Data ownership and accessibility</b>	Ground is a project built by Google and FAO under the Forest Data Partnership with help from SIG, Ecam, and open-source community contributors. FAO is the sole host of the app/software, and the user organisations control the data (in the future, it should be hosted and maintained by the users).
<b>Other info</b>	Designed to be used by non-technical users. Ground complements OpenForis tools, which include WHISP, SEPAL, and Earth Map, enabling users to process historical and current satellite data using the capabilities of Google Earth Engine.
<b>Link</b>	<a href="https://groundplatform.org/">https://groundplatform.org/</a>

<b>INATrace</b>	
<b>Ease of access (what kind of tool needed, registration, etc.)</b>	Web and mobile app. Registration with an email is required, but it is also possible to use the App in a guest mode. In guest mode, the user can create new farmers, plots, and capture plots but cannot sync the data with the server.
<b>Possibility of adding information other than geolocation data (land ownership, production quantity, etc.)</b>	Yes, it can be customised and tailored to specific needs.
<b>Languages available</b>	The default language is English, but the app supports multiple languages.
<b>Offline accessibility</b>	The app allows data collection offline, including farmer profiles and GPS data, with automatic synchronisation once an internet connection is available.
<b>Availability and cost</b>	Open source (with integration of FAO's WHISP and Ground Tools), free.
<b>Developers/hosts Data ownership and accessibility</b>	Financed by the German Federal Ministry for Economic Cooperation and Development, implemented by GIZ under the Sustainable Agricultural Supply Chains Initiative (SASI). The users retain full data ownership.
<b>Other info</b>	Designed to establish transparent agricultural supply chains and improve the economic situation of smallholder farmers.
<b>Link</b>	<a href="https://inatrace.org/en/">https://inatrace.org/en/</a> INATrace Pro: <a href="https://inatrace.pro/en">https://inatrace.pro/en</a> Mobile App: <a href="https://apps.apple.com/us/app/inatrace-pro/id6502619474">https://apps.apple.com/us/app/inatrace-pro/id6502619474</a> GitHub: <a href="https://github.com/INATrace">https://github.com/INATrace</a> Comprehensive guides and tutorials: <a href="https://inatrace-docs.vercel.app/">https://inatrace-docs.vercel.app/</a>

<b>KoboCollect</b>	
<b>Ease of access (what kind of tool needed, registration, etc.)</b>	Android mobile app. It requires a free KoboToolbox account.
<b>Possibility of adding information other than geolocation data (land ownership, production quantity, etc.)</b>	Yes, designed for complex primary data collection.
<b>Languages available</b>	It is possible to translate questions into hundreds of different languages.
<b>Offline accessibility</b>	Yes
<b>Availability and cost</b>	Based on the ODK Collect open-source application, free.
<b>Developers/hosts Data ownership and accessibility</b>	KoboCollect is hosted and maintained by Kobo, an international non-profit organisation. Data is hosted on a public cloud, with the option to pay for a secure private solution.
<b>Other info</b>	Solution widely used by cooperatives.
<b>Link</b>	Goole Play Store, KoboToolbox: <a href="https://www.kobotoolbox.org/">https://www.kobotoolbox.org/</a> GitHub: <a href="https://github.com/kobotoolbox">https://github.com/kobotoolbox</a>

<b>Terra Trac</b>	
<b>Ease of access (what kind of tool needed, registration, etc.)</b>	The Android mobile app can be downloaded from the Google Play Store for free. No registration is required to use the App. Request: Site place, agent name and phone number.
<b>Possibility of adding information other than geolocation data (land ownership, production quantity, etc.)</b>	No, there is no option to add extra information.
<b>Languages available</b>	By default, the app is set to English, but users can select from other available languages, including French, Spanish, Amharic, Oromo, and Swahili.
<b>Offline accessibility</b>	Yes, offline functionality.
<b>Availability and cost</b>	Open source (built on the FAO WHISP project), free.
<b>Developers/hosts Data ownership and accessibility</b>	TerraTrac was developed by Techno Serve Labs, an international non-profit organisation, and funded by the U.S. Department of Agriculture. Data is stored locally on the Android device. Site management can create, edit, and manage collection sites, and farm management can create, edit, and manage farm data.
<b>Other info</b>	TerraTrac was specifically designed to support farmers in collecting data for the EUDR. Users can share geolocation data with downstream buyers via email or messaging apps.
<b>Link</b>	Under the commodities list, only coffee and cocoa appear. Mobile App: Google Play App store GitHub: <a href="https://github.com/TechnoServe/TerraTrac-Mobile">https://github.com/TechnoServe/TerraTrac-Mobile</a>

<b>QField</b>	
<b>Ease of access (what kind of tool needed, registration, etc.)</b>	QField is a mobile application available for Android, iOS, Windows, and macOS. To use it, you first prepare a QGIS project on a computer (using the free QGIS desktop software) and then transfer it to the mobile device via cable, cloud, or QFieldCloud (an optional synchronization service). Registration is not required to use QField offline, but creating an account is needed if using QFieldCloud for syncing projects and data.
<b>Possibility of adding information other than geolocation data (land ownership, production quantity, etc.)</b>	Yes. QField allows adding and editing custom attributes and forms (defined in QGIS) linked to geographic features such as plots, boundaries, or points. These can include land tenure, crop type, production volume, photos, or notes. Users can also attach images or documents, define dropdown lists, apply data validation rules, and include date or text fields to match EUDR due diligence requirements.
<b>Languages available</b>	Available in multiple languages.
<b>Offline accessibility</b>	Yes, QField is designed for full offline use.
<b>Availability and cost</b>	Open source and free to use. The mobile app and QFieldSync plugin are free. Optional QFieldCloud service offers free and paid plans depending on data volume and number of users.
<b>Developers/hosts Data ownership and accessibility</b>	QField is developed and maintained by OPENGIS.ch, an open-source geospatial software company based in Switzerland, in collaboration with the QGIS community. Data collected with QField is stored locally on the user's device or organisation's storage. Users retain full ownership and control of their data.
<b>Other info</b>	It supports external GPS/GNSS receivers for higher accuracy, making it suitable for EUDR geolocation mapping. QField may require some technical setup and training for field enumerators, especially in configuring QGIS forms and synchronization workflows.
<b>Link</b>	<a href="https://qfield.org">https://qfield.org</a> <a href="https://docs.qfield.org">https://docs.qfield.org</a> <a href="https://qfield.cloud">https://qfield.cloud</a> GitHub: <a href="https://github.com/opengisch/QField">https://github.com/opengisch/QField</a>

