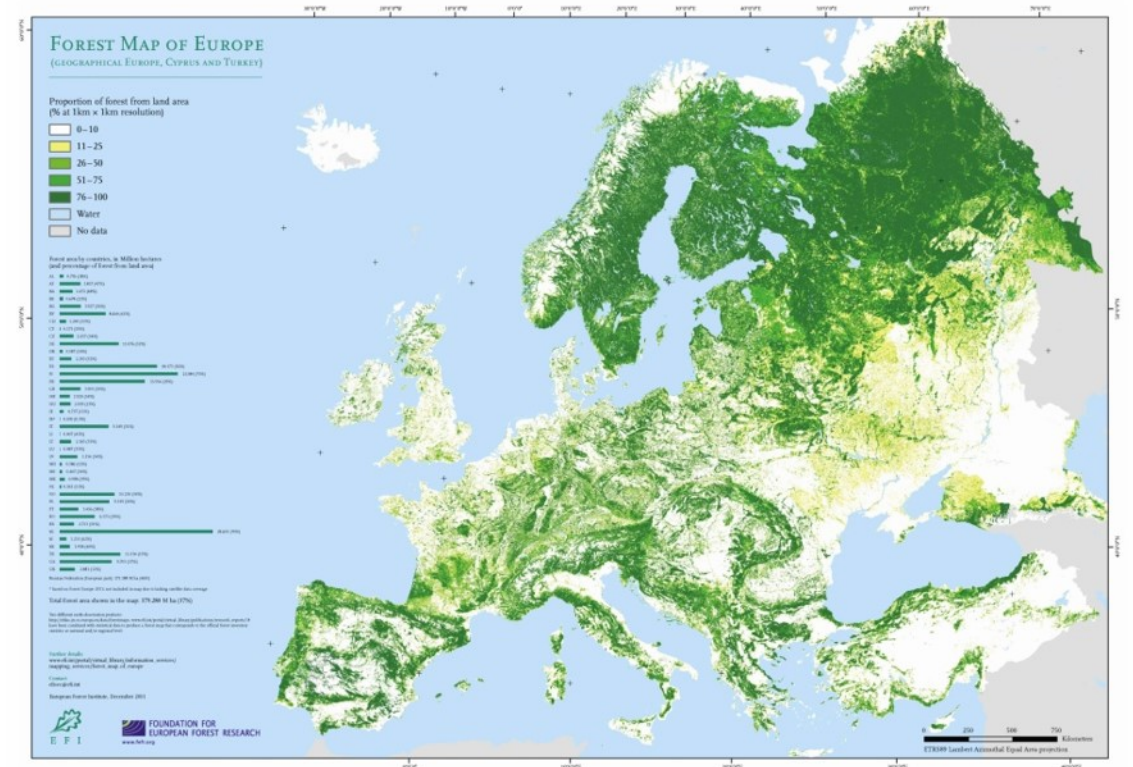


# European Forest Institute

# European forests

- Cover 43% of EU land
- Key for the sustainability of: biodiversity, water and soil
- Capture 13% of CO<sub>2</sub> emissions
- Main source of non-food, non feed renewable biological resources





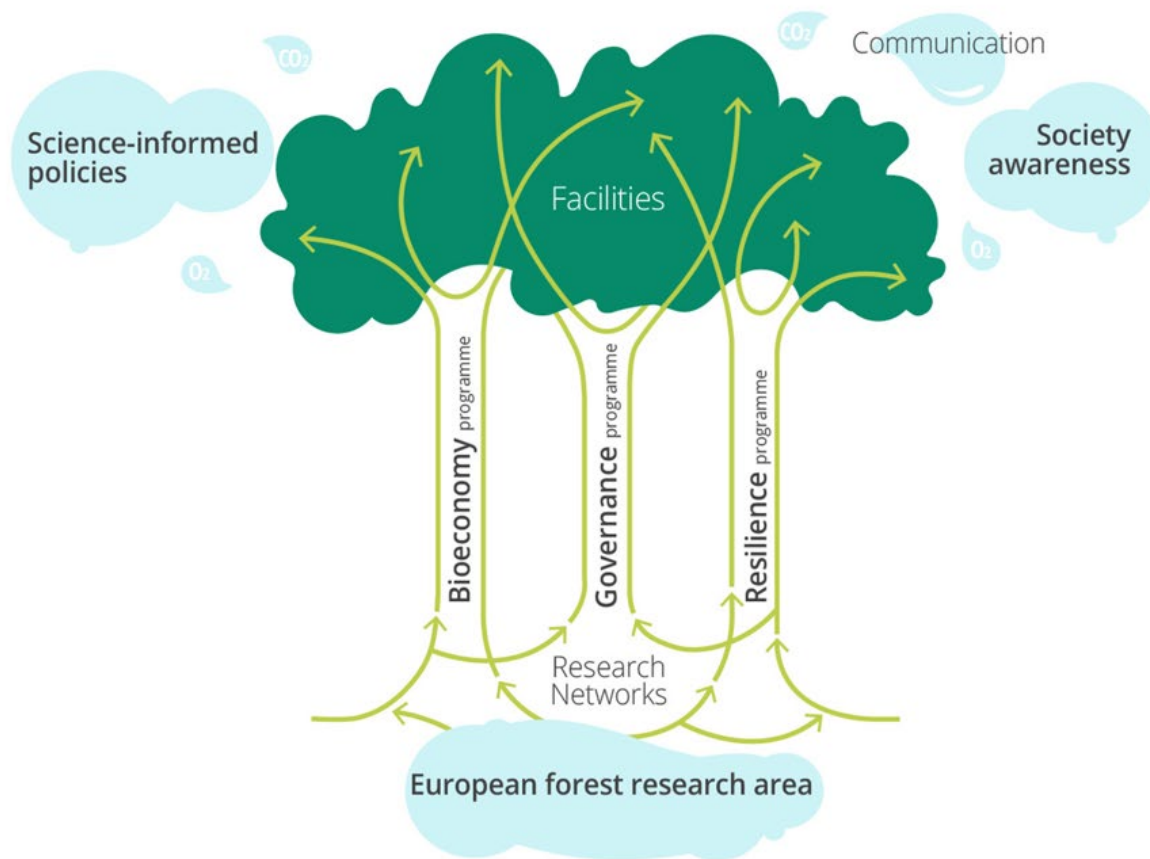
## VISION

A world where forests significantly  
contribute to sustainable wellbeing

## MISSION STATEMENT

Connecting knowledge to action

# EFI Strategy 2025 and how we implement it



# Thematic framework

Bioeconomy, Governance & Resilience



Siraanamwong, Larisa Lofitskaya, Stephan Leyk/Fotolia



# An ambitious forest research and innovation area

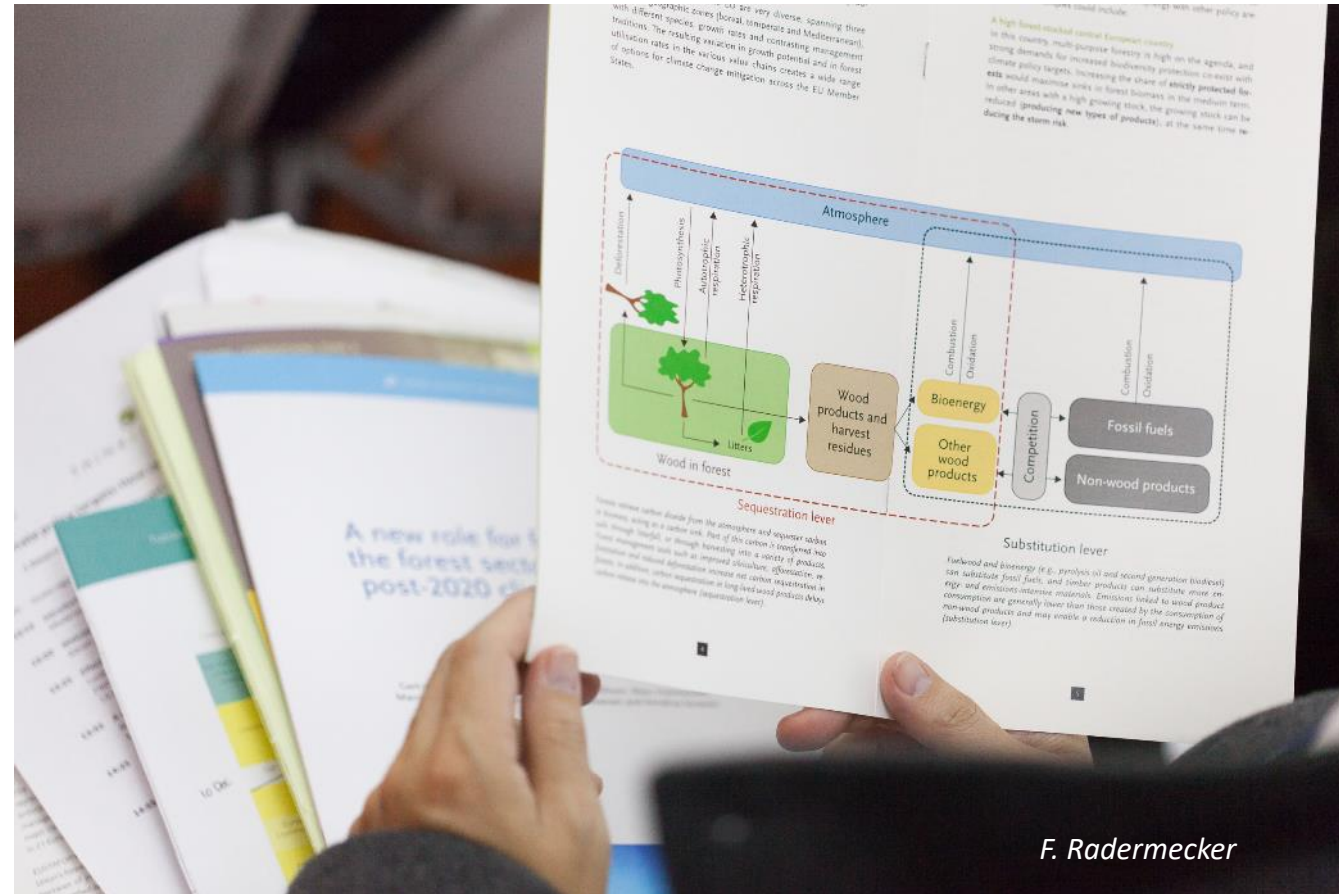
- We aim to provide European forest research organisations with the resources, capacities and infrastructures they need to maximise their scientific and societal impact.



*Franck Boston-Fotolia*

# Science informed policies

- We want to increase the relevance and impact of forest-related research on European policies, and support policy makers and practitioners in the transition toward a circular, bio-based society.



F. Radermecker



# Awareness in society

- We work to contribute to increased awareness of the role of forests and forest science in building a sustainable society.



Ruta Saulyte - Fotolia



# *Connecting knowledge to action*

# EU FLEGT Facility

- Supports the implementation of the EU FLEGT Action Plan. The Facility contributes to combating illegal logging and strengthening forest governance while encouraging sustainable economic development in countries that produce or process timber and export to the EU.



Tono Balaguer/Fotolia



# EU REDD Facility

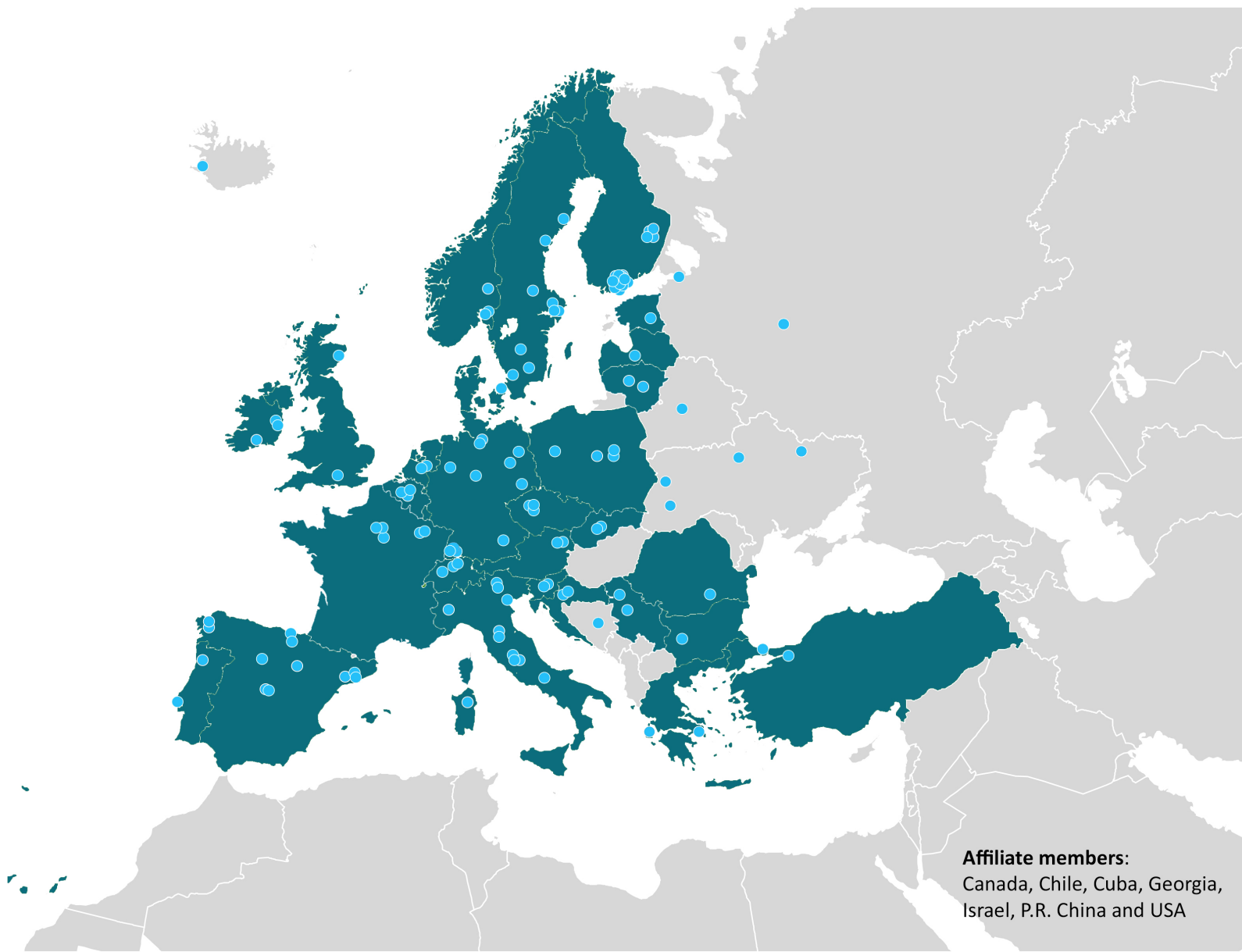
- Supports developing countries in improving land-use governance as part of their efforts to slow, halt and reverse deforestation. The Facility contributes to the overall EU effort to reduce its impact on deforestation in developing countries.

*Nilna Verkerk*



# Owners of EFI

- Currently, a total of 29 European States have ratified the Convention on EFI.
- EFI has c. 130 member organisations in 40 countries.



**Affiliate members:**  
Canada, Chile, Cuba, Georgia,  
Israel, P.R. China and USA



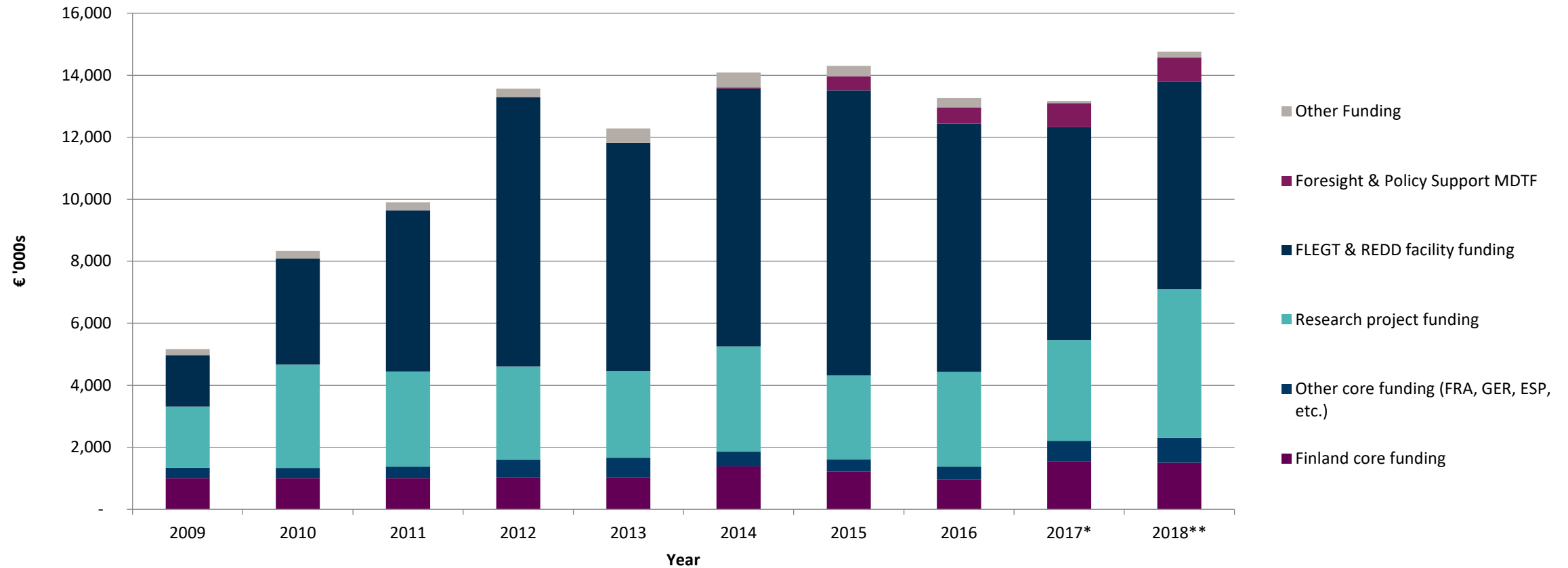
*Expertise and knowhow at EFI*



Johanna Kokkola



# EFI funding







EUROPEAN FOREST  
INSTITUTE

For more information on EFI, please visit:

[www.efi.int](http://www.efi.int)

Yliopistokatu 6, 80100 Joensuu, Finland

+358 10 773 4300

[efisec@efi.int](mailto:efisec@efi.int)