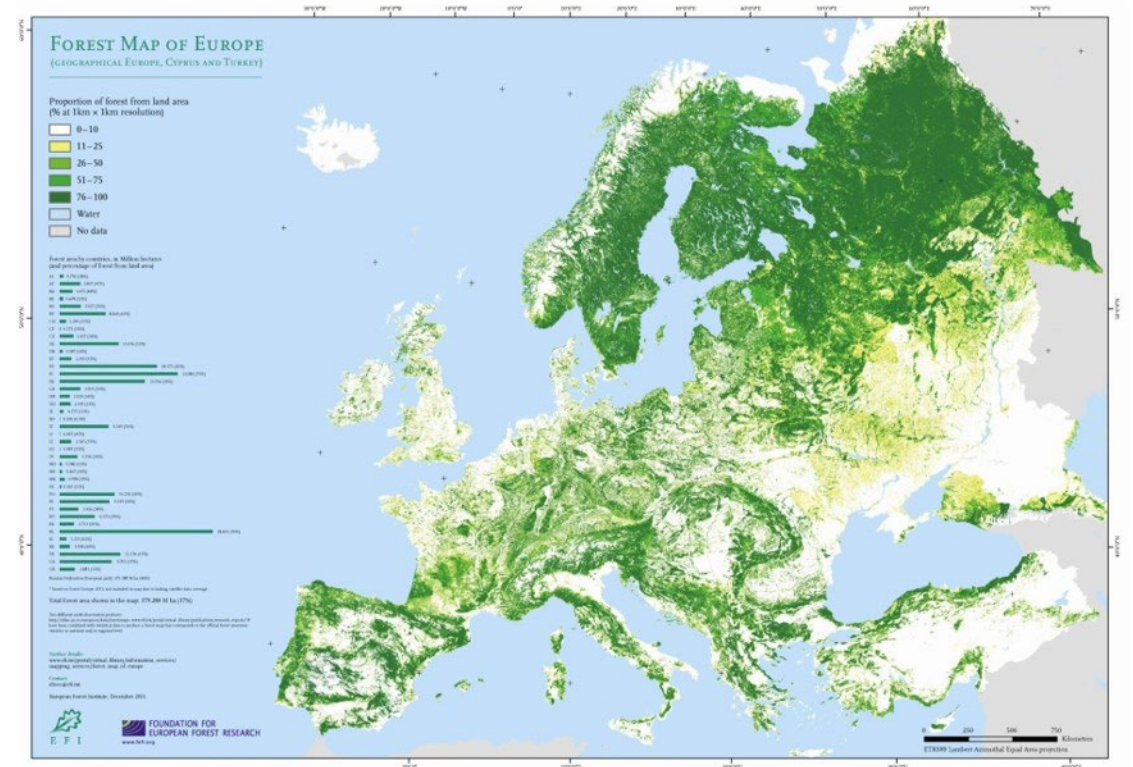


European Forest Institute

European forests

- Cover 43% of EU land
- Key for the sustainability of: biodiversity, water and soil
- Capture 13% of CO2 emissions
- Main source of non-food, non feed renewable biological resources





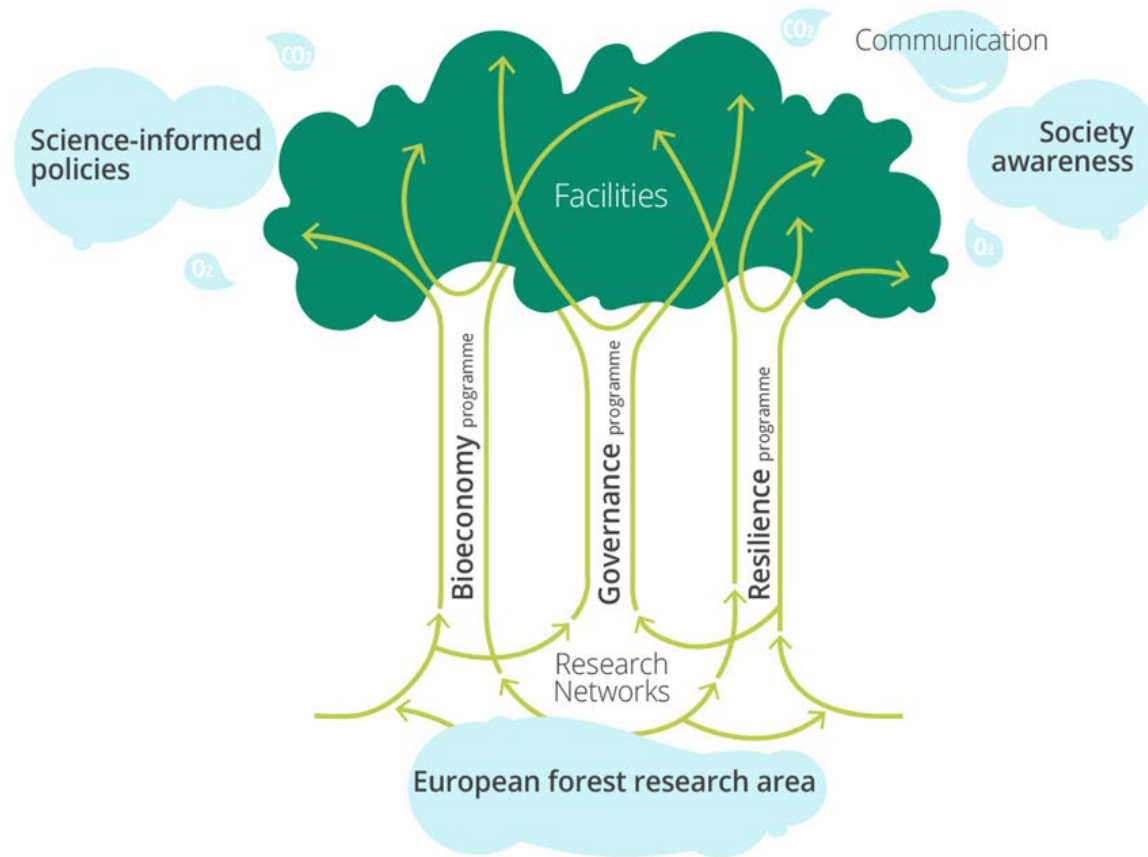
VISION

A world where forests significantly
contribute to sustainable wellbeing

MISSION STATEMENT

Connecting knowledge to action

EFI Strategy 2025 and how we implement it



Thematic framework

Bioeconomy, Governance & Resilience



Siraanamwong, Larisa Lofitskaya, Stephan Leyk/Fotolia

An ambitious forest research and innovation area

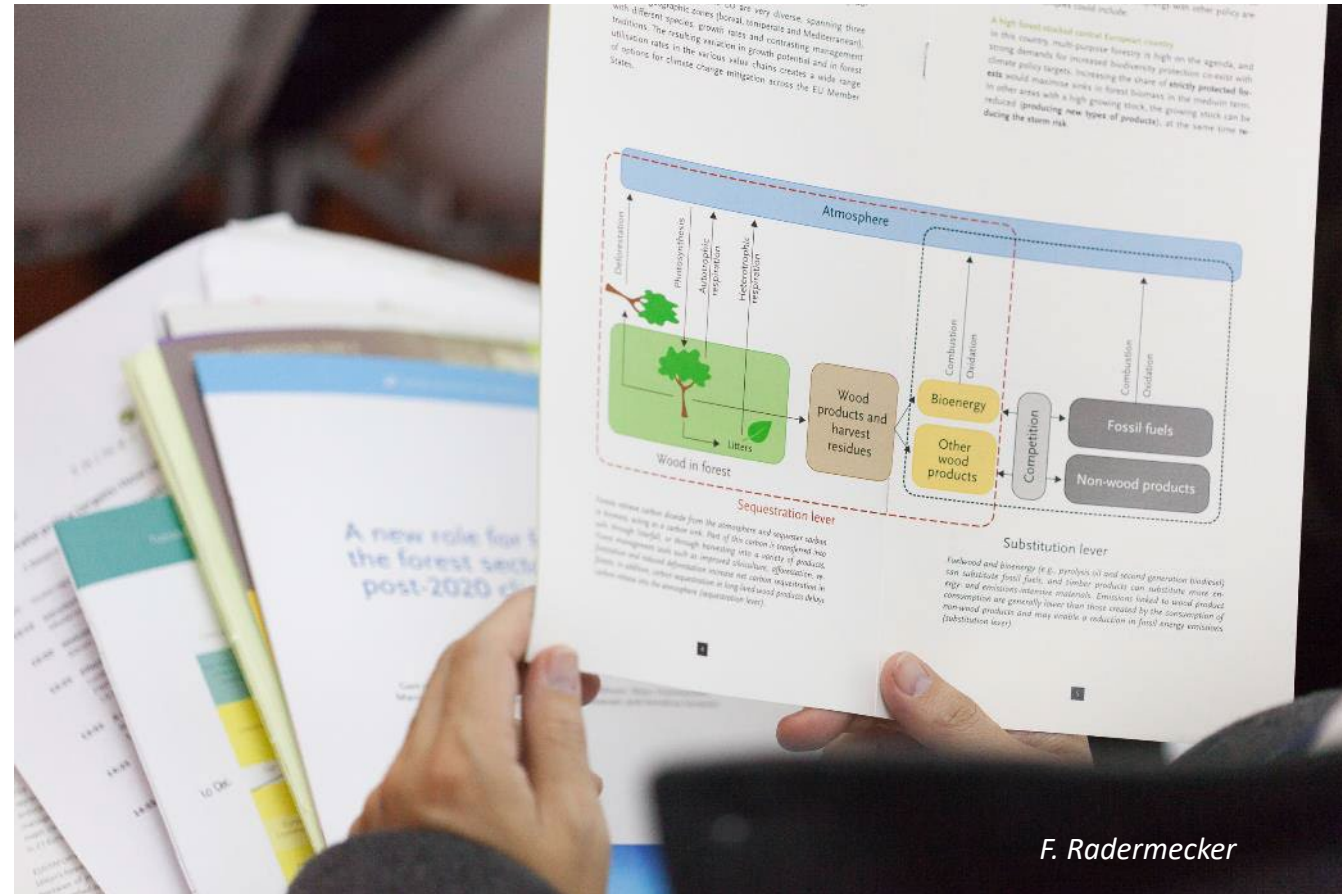
- We aim to provide European forest research organisations with the resources, capacities and infrastructures they need to maximise their scientific and societal impact.



Franck Boston-Fotolia

Science informed policies

- We want to increase the relevance and impact of forest-related research on European policies, and support policy makers and practitioners in the transition toward a circular, bio-based society.



Awareness in society

- We work to contribute to increased awareness of the role of forests and forest science in building a sustainable society.



Ruta Saulyte - Fotolia

International Partnerships Facility

Protecting & restoring the world's forests through sustainable forest and land-use

To maximise
their role in
green economic
growth



To mitigate
climate change
and adapt to its
impacts



To foster legal,
deforestation-free
and sustainable
commodity
production and trade



To alleviate poverty



Building effective partnerships and facilitating inclusive national and international processes



Policy, regulatory and institutional reform processes

1



Transparency, traceability and accountability in commodity supply chains

2



Inclusive and informed land-use planning

3



Public-Private Partnerships at jurisdictional level

4



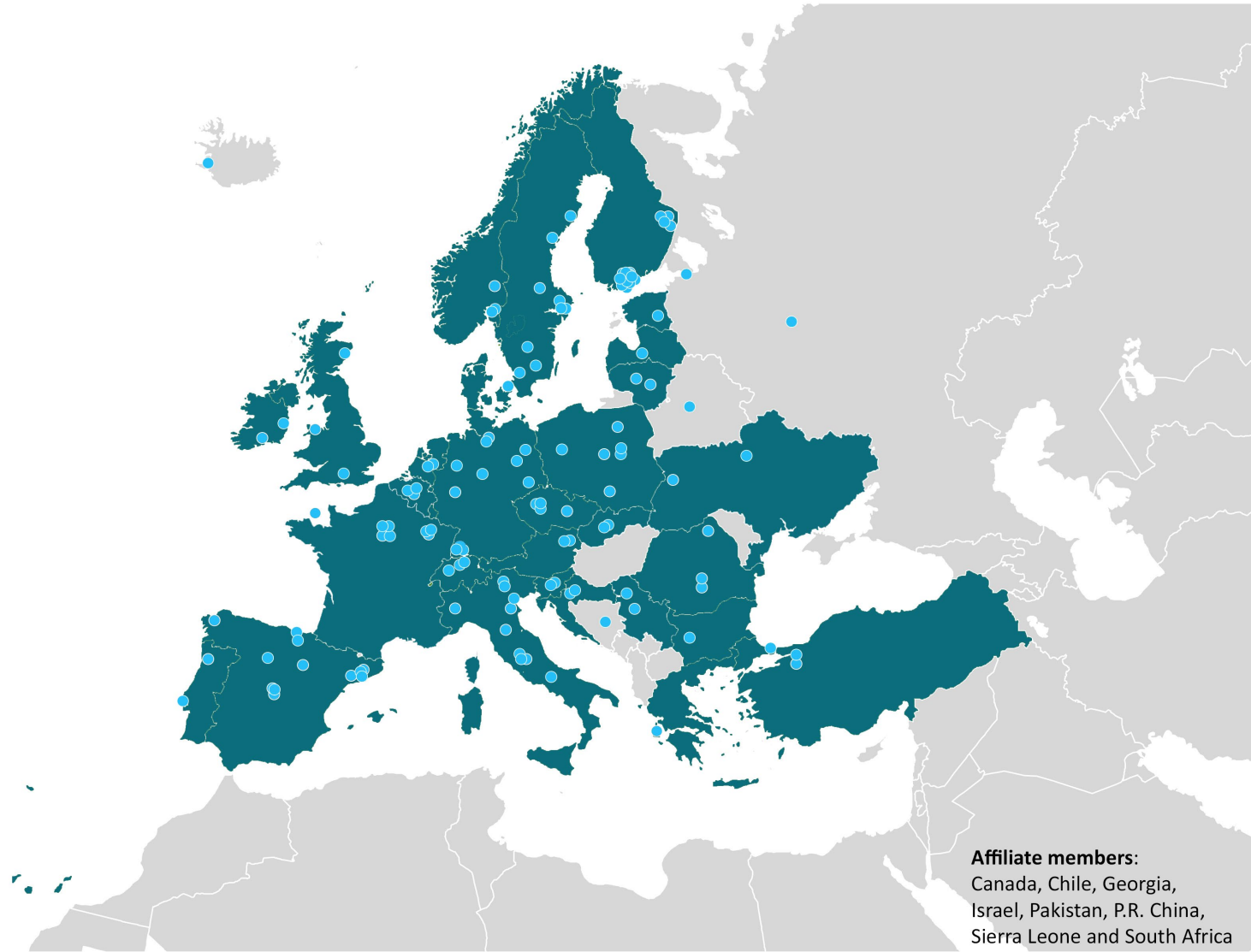
Integration of small producers in sustainable supply chains

5

Connecting knowledge to action

Owners of EFI

- Currently, a total of 30 European States have ratified the Convention on EFI.
- EFI has c. 130 member organisations in 42 countries.



Join us!

Any **organisation** can apply for EFI membership:

- **Associate membership** is open to research institutes, educational establishments, commercial organisations, forest authorities, non-governmental organisations and institutions of similar nature from European States.
- **Affiliate membership** is open to institutions of a similar nature from non-European States.

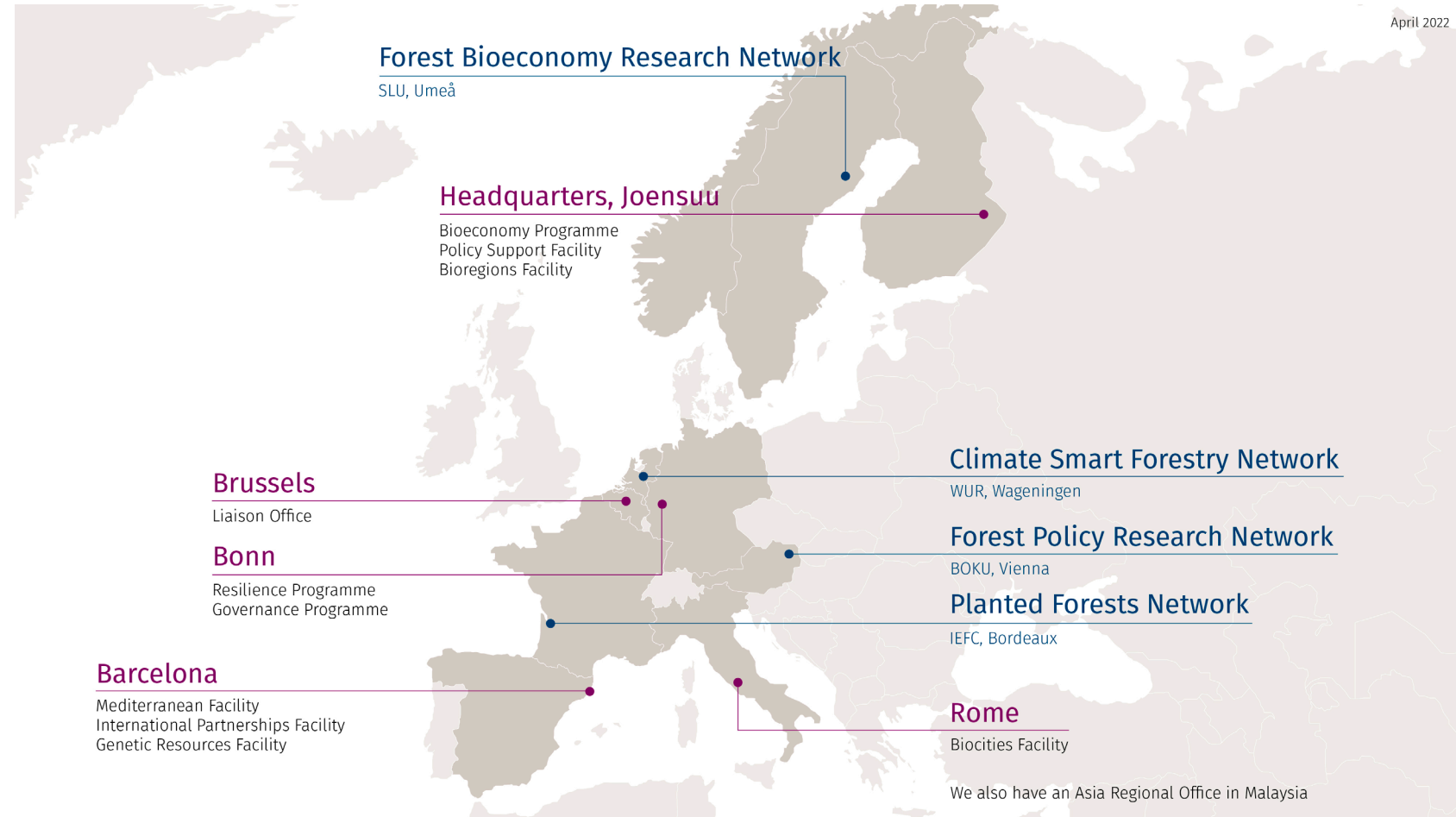
Further info here:

<https://www.efi.int/membership>

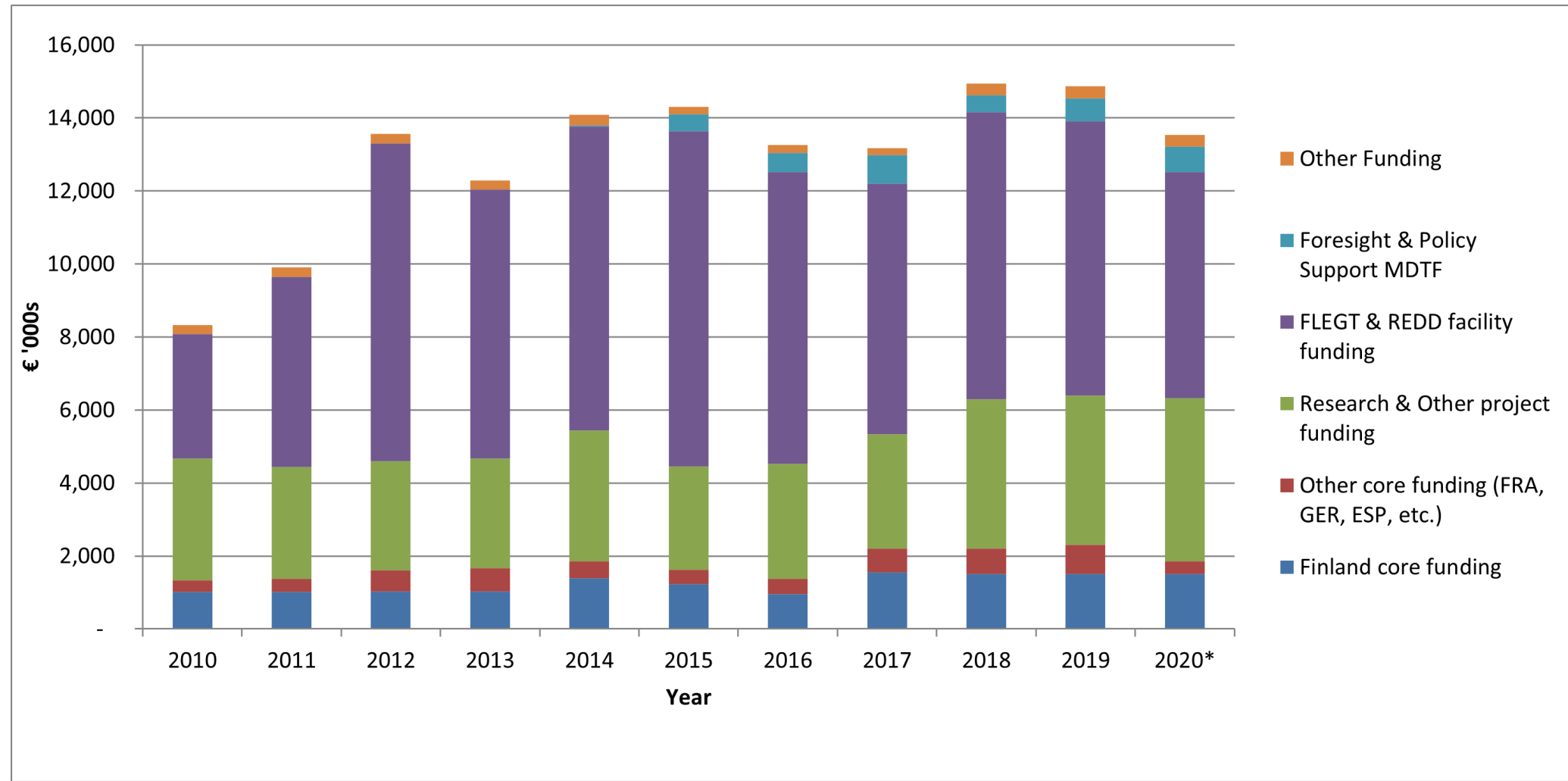


Expertise and knowhow at EFI

- 136 employees
- 33 nationalities
- Average age 42
- Gender balance
 - 52% male
 - 48 % female



EFI funding





EUROPEAN FOREST
INSTITUTE

For more information on EFI, please visit:

www.efi.int

Yliopistokatu 6, 80100 Joensuu, Finland

+358 10 773 4300

efisec@efi.int