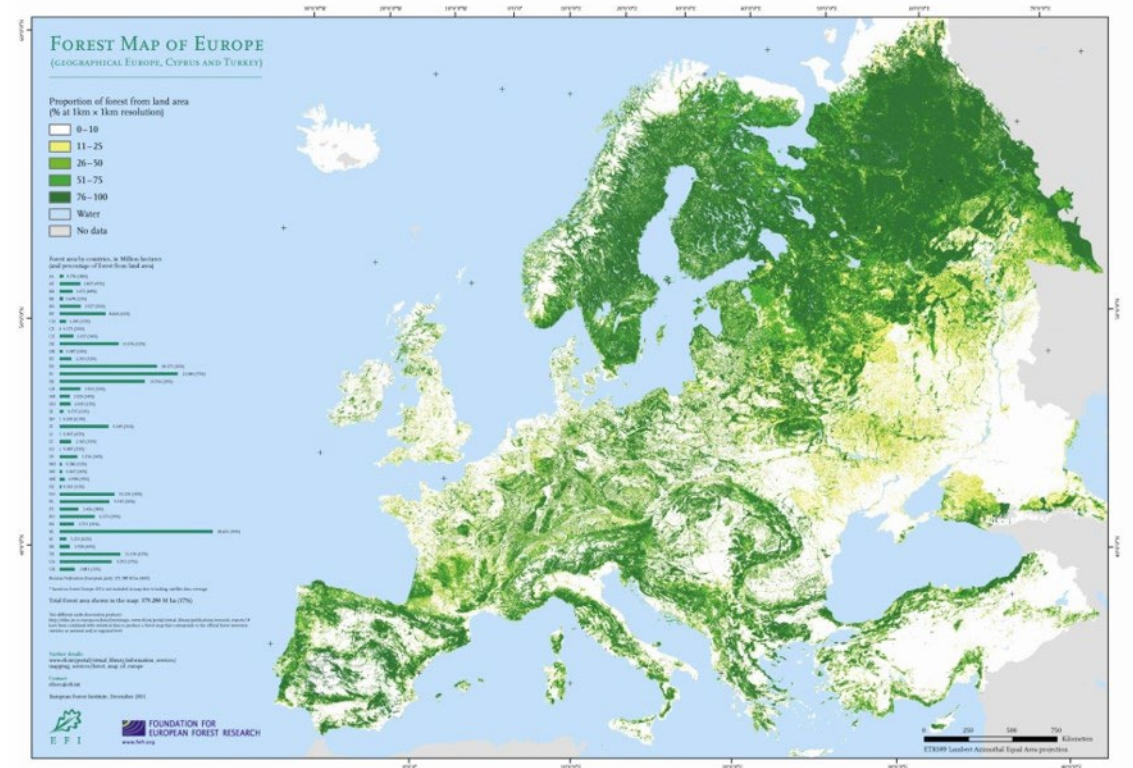


# **European Forest Institute**

# European forests

- Cover 43% of EU land
- Key for the sustainability of: biodiversity, water and soil
- Capture 13% of CO<sub>2</sub> emissions
- Main source of non-food, non feed renewable biological resources





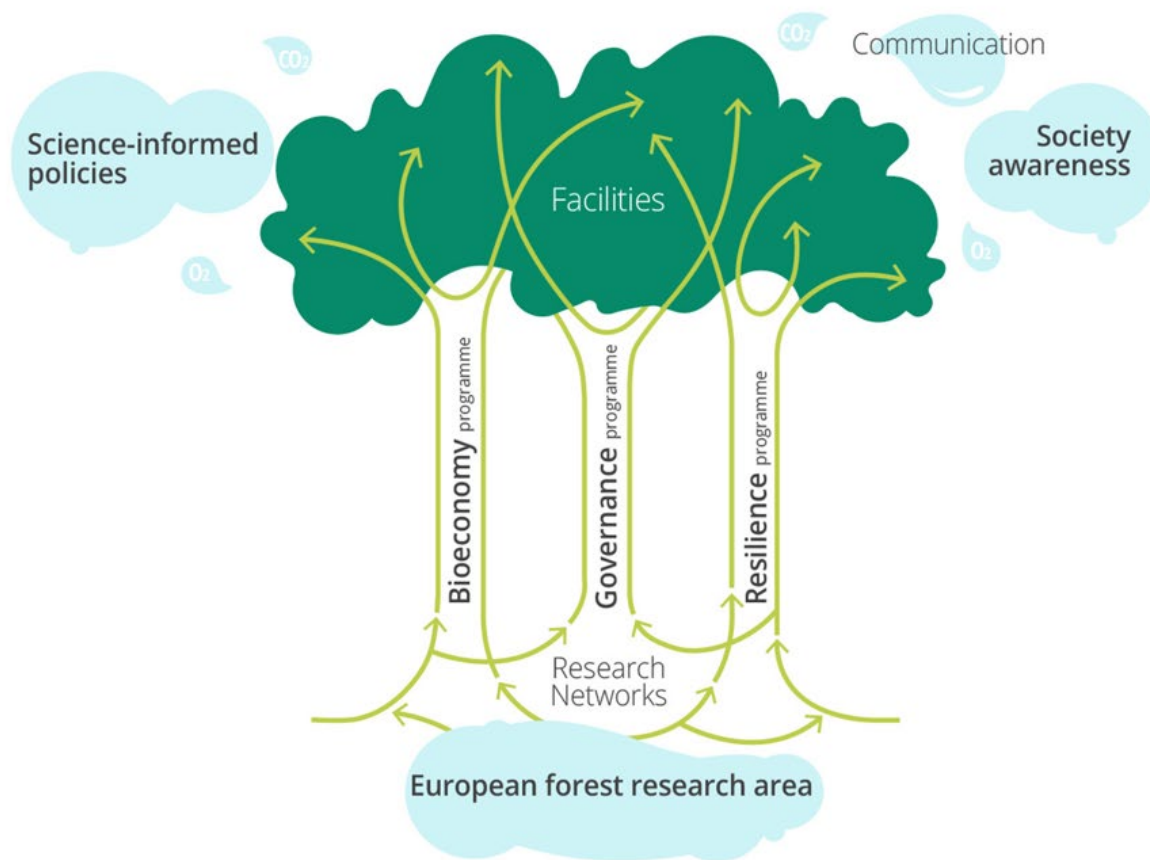
## VISION

A world where forests significantly  
contribute to sustainable wellbeing

## MISSION STATEMENT

Connecting knowledge to action

# EFI Strategy 2025 and how we implement it





# Thematic framework

Bioeconomy, Governance & Resilience



Siraanamwong, Larisa Lofitskaya, Stephan Leyk/Fotolia

# An ambitious forest research and innovation area

- We aim to provide European forest research organisations with the resources, capacities and infrastructures they need to maximise their scientific and societal impact.

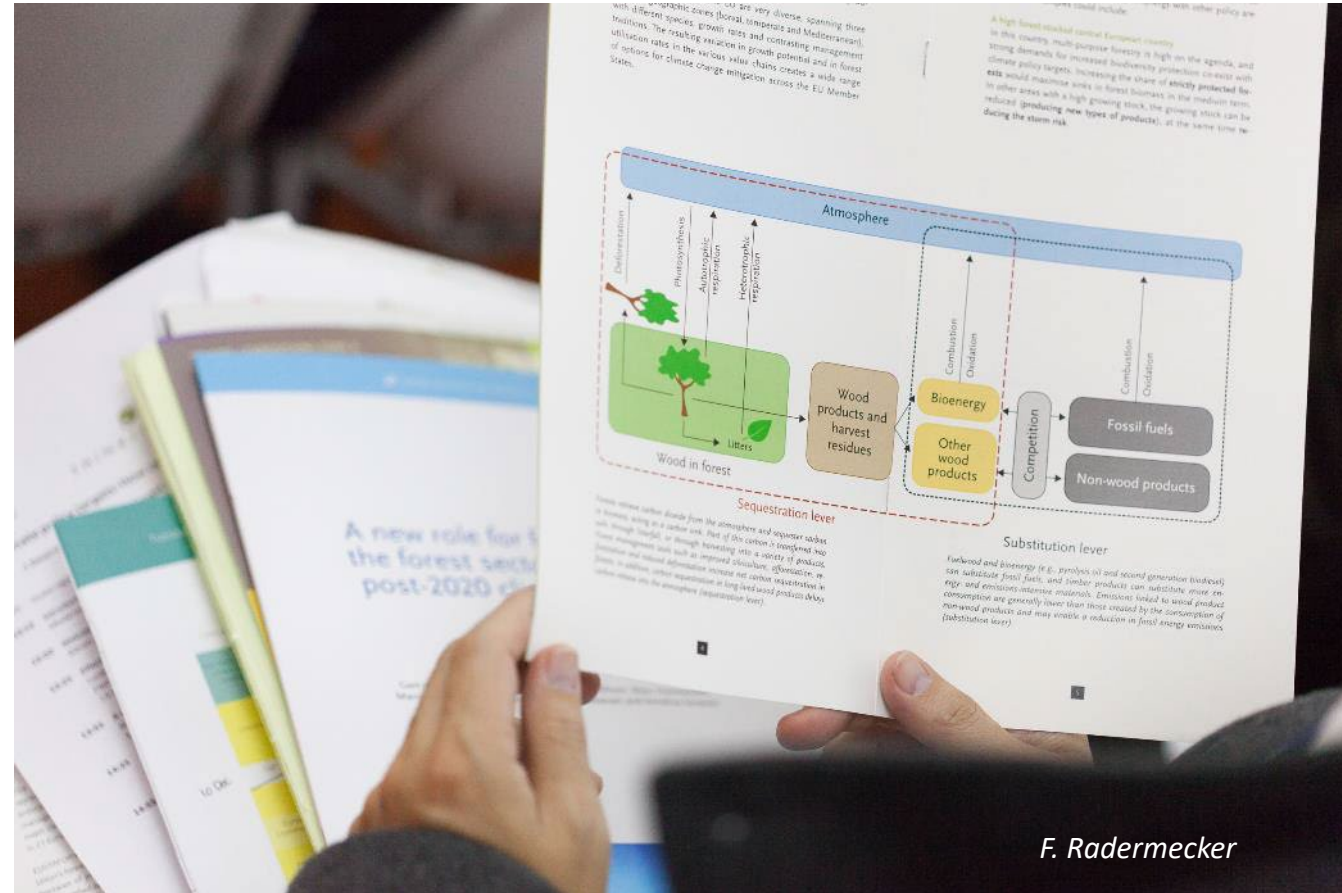


*Franck Boston-Fotolia*



# Science informed policies

- We want to increase the relevance and impact of forest-related research on European policies, and support policy makers and practitioners in the transition toward a circular, bio-based society.



# Awareness in society

- We work to contribute to increased awareness of the role of forests and forest science in building a sustainable society.



Ruta Saulyte - Fotolia



# International Partnerships Facility

# Protecting & restoring the world's forests through sustainable forest and land-use

**To maximise**  
their role in  
green economic  
growth



**To mitigate**  
climate change  
and adapt to its  
impacts



**To foster** legal,  
deforestation-free  
and sustainable  
commodity  
production and trade



**To alleviate** poverty



# Building effective partnerships and facilitating inclusive national and international processes



Policy, regulatory and institutional reform processes

1



Transparency, traceability and accountability in commodity supply chains

2



Inclusive and informed land-use planning

3



Public-Private Partnerships at jurisdictional level

4



Integration of small producers in sustainable supply chains

5

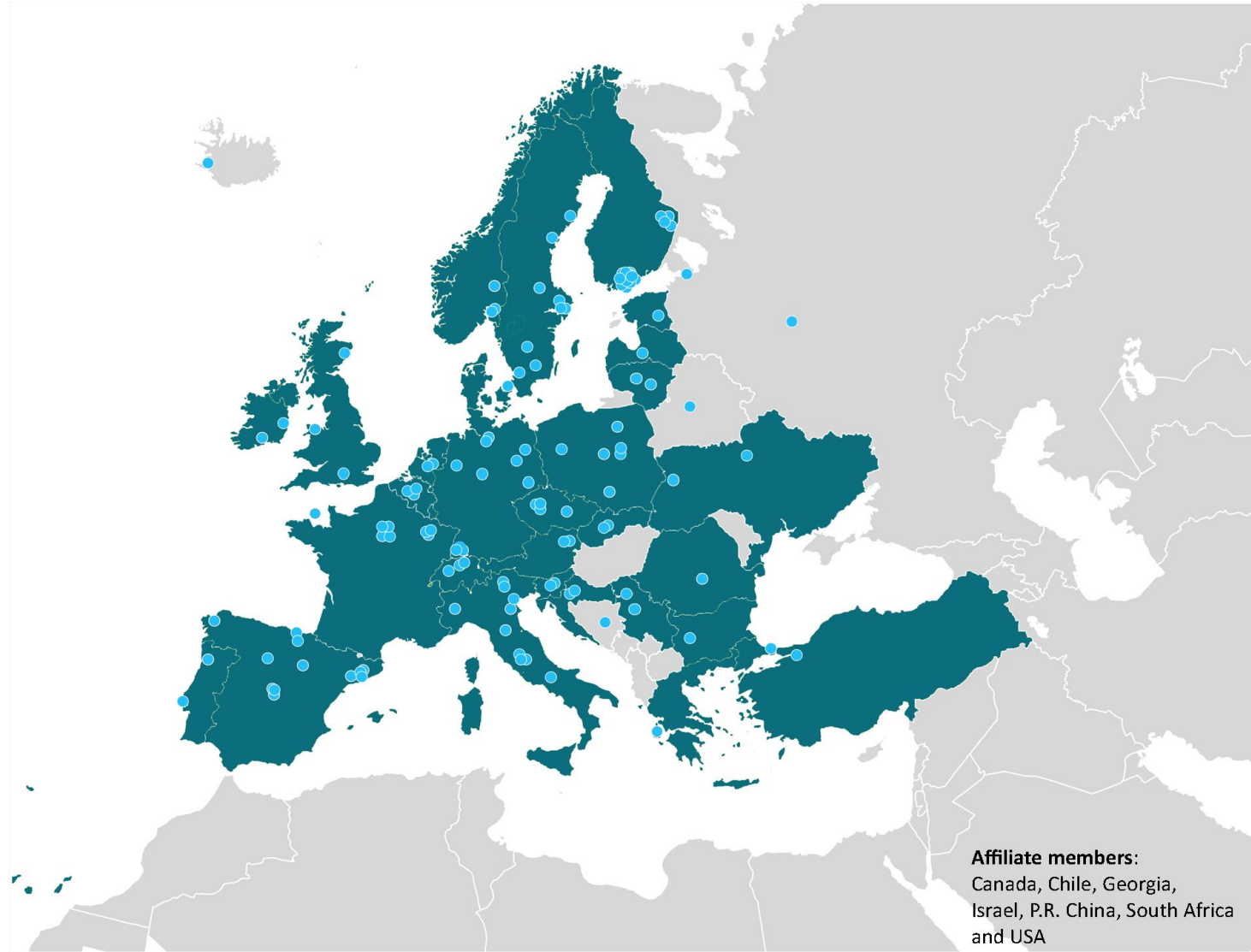




# *Connecting knowledge to action*

# Owners of EFI

- Currently, a total of 30 European States have ratified the Convention on EFI.
- EFI has c. 130 member organisations in 40 countries.



# Join us!

Any **organisation** can apply for EFI membership:

- **Associate membership** is open to research institutes, educational establishments, commercial organisations, forest authorities, non-governmental organisations and institutions of similar nature from European States.
- **Affiliate membership** is open to institutions of a similar nature from non-European States.

Further info here:

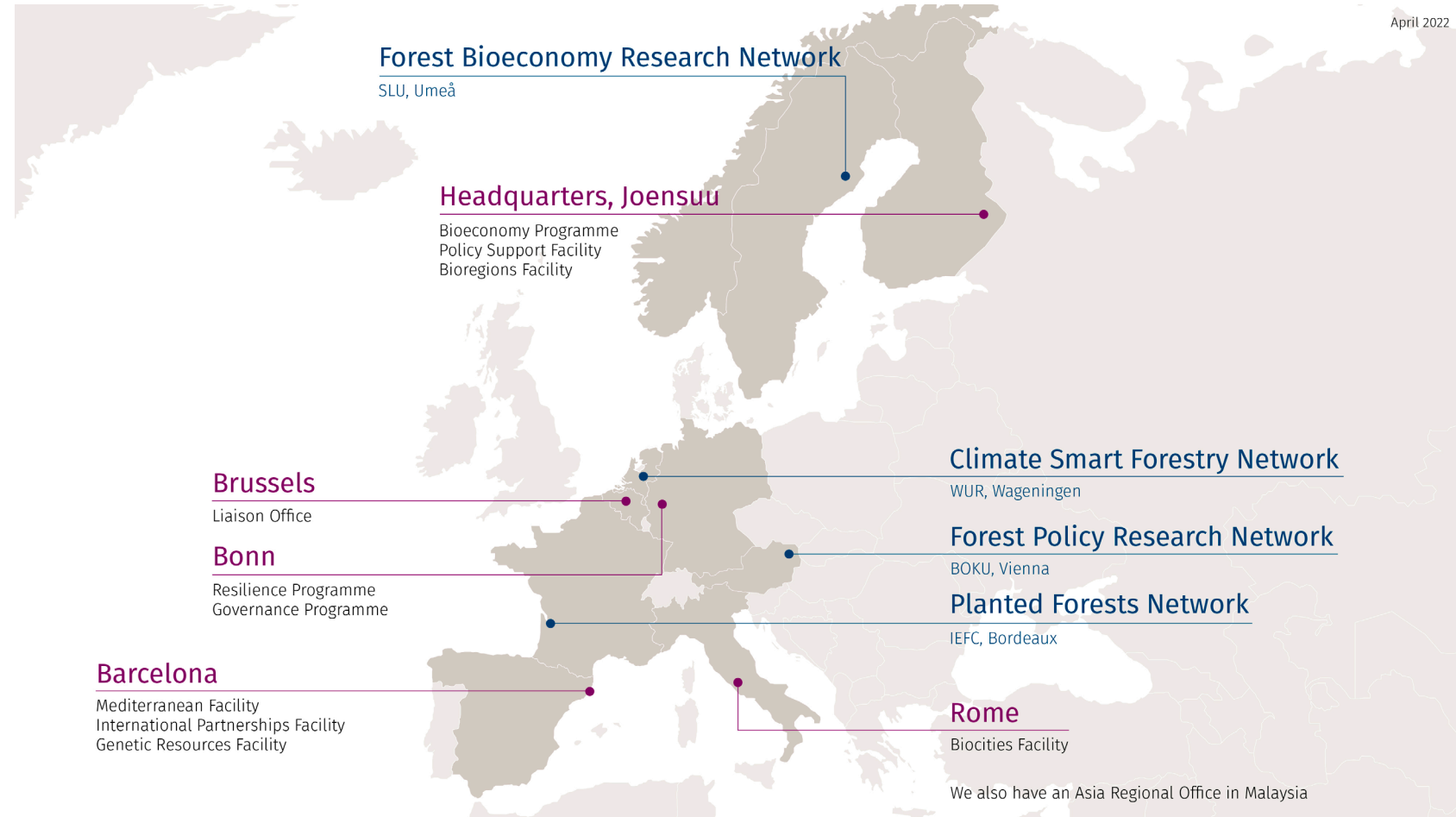
<https://www.efi.int/membership>



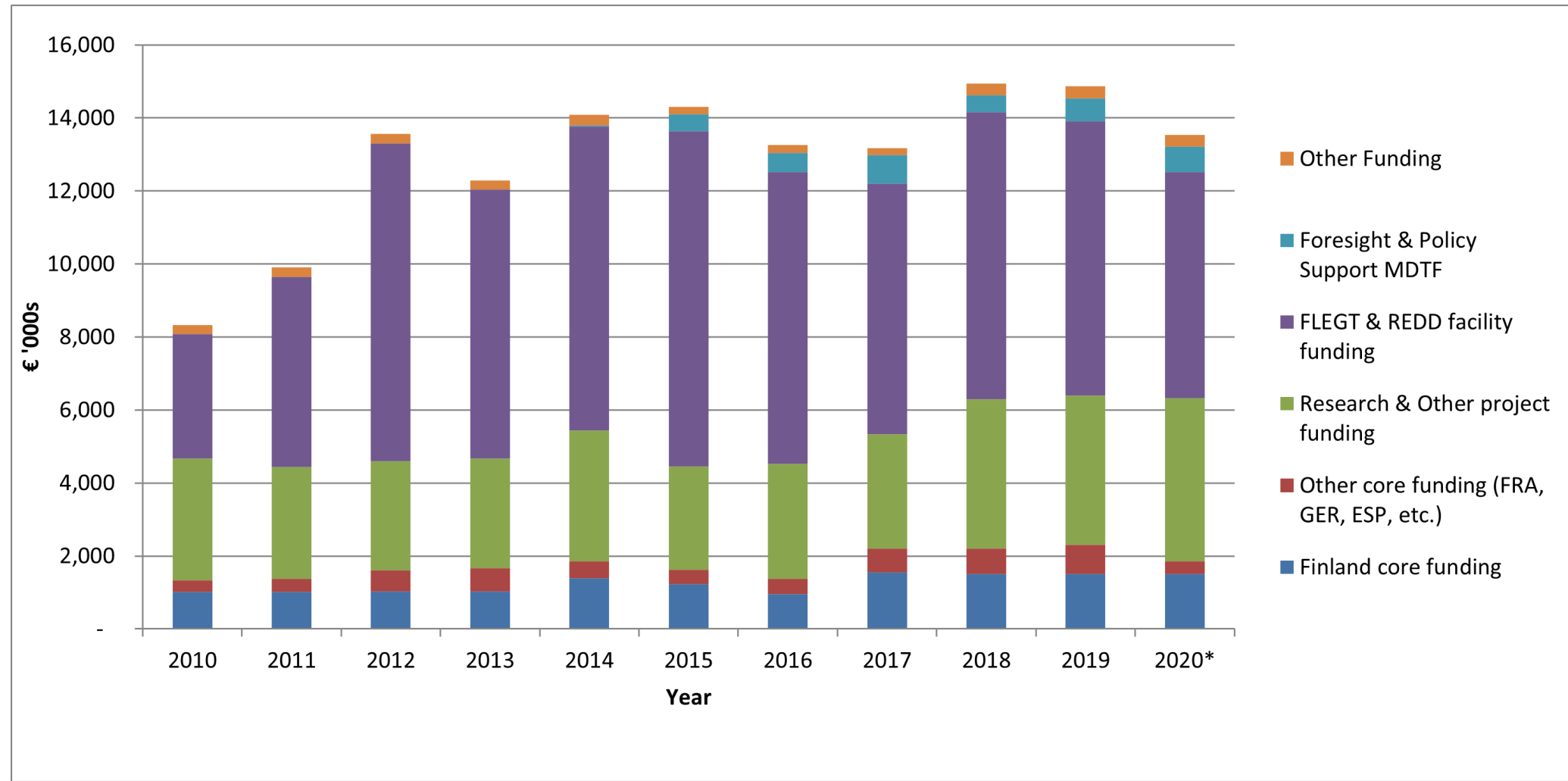


# Expertise and knowhow at EFI

- 136 employees
- 33 nationalities
- Average age 42
- Gender balance
  - 52% male
  - 48 % female



# EFI funding





EUROPEAN FOREST  
INSTITUTE

For more information on EFI, please visit:

[www.efi.int](http://www.efi.int)

Yliopistokatu 6, 80100 Joensuu, Finland

+358 10 773 4300

efisec@efi.int