

Future plans for pan-European indicators



Thomas Haußmann (Liaison Unit Bonn)

Bernhard Wolfslehner (EFI FE Team)

C&I as key tool

FOREST EUROPE defined the pan-European concept of **Sustainable Forest Management** in 1993¹.

FOREST EUROPE has led to achievements such as the internationally agreed **guidelines, criteria and indicators** for Sustainable Forest Management.

- National forest inventories as backbone
- Focusing on SFM trends
- Allow for trans-national comparability

FOREST EUROPE, together with FAO and UNECE, produces the report “**State of Europe’s Forests**” (SoEF) every five years

¹Helsinki Resolution "General Guidelines for the Sustainable Management of Forests in Europe"

Focus of new Work Programme

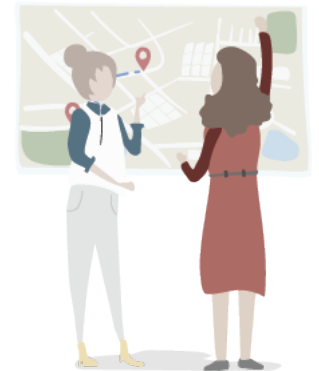
- Revisit SFM, C&I and SoEF report
 - coherence of concepts, review indicators & uptake of results
- Forest Risk Knowledge Mechanism
 - create a platform to cope with forest-related risks and prevention
- Green Jobs and Forest Education
- Rapid response
 - FE as forum to exchange on emerging, urgent issues
- Communications

A new era for SFM

- SFM Think Tank to discuss on links to other forest-related concepts (e.g. circular bioeconomy, climate-smart, biodiversity-safe forestry) and reveal information needs
- Check C&I for their ability to answer forest questions and the requirements for additional information to create new SFM narratives
- Develop a set of key indicators that are bullet-proof
- Redesign the State of Europe Forests report around these key indicators

A community around indicators

- Collaboration with UNECE and FAO on next joint data collection already started
 - incl. a SoEF section in the FRA database, a new interface for data providers to be developed
- Close collaboration with UNECE/FAO Team of Specialists on Forest Monitoring on further indicator development



Forest Risk Knowledge Mechanism

- Provide a platform for information related to forests risks
- New forms of information that needs to be related to SFM
- Update of forest damage indicator expected (in a project by UNECE)



Employment and Education

- New key activity by FOREST EUROPE
- New data expected (inter alia by a study by the Thünen Institute)
- Current employment indicator rather traditional – check for opportunities to integrate Green Jobs



Outlook



- Focus on data quality and completeness for C&I
- Further develop C&I as key instrument of FOREST EUROPE
- Work closely together with other international processes
- Start SFM Think Tank in early 2022



Forest Europe growing life

Ministerial Conference on the Protection of Forests in Europe

foresteurope.org



/FORESTEUROPE



@FORESTEUROPE



/company/FORESTEUROPE

Head of LUBo:

Thomas Haußmann

thomas.haussmann@foresteurope.org

Team leader EFI FE Team:

Dr. Bernhard Wolfslehner

bernhard.wolfslehner@efi.int