



Ministry of Agriculture and Forestry of Finland



Present and future of forest research coordination in the EU

EFI 2023 Annual Conference in Novi Sad, Serbia

Scientific seminar on 'European forests and forest science: transition to the future'

21 September 2023

Mika Kallio, MMM



Presentation outline

- 1. European Research Area (ERA) and the concept of ‘partnerships’**
- 2. ERA-NETs in the forest-based sector**
- 3. CSA ForestValue2**
- 4. European Partnerships**
- 5. Candidate European R&I Partnership Forests and Forestry for a Sustainable Future**



EUROPEAN RESEARCH AREA (ERA)



What is ERA?

The European Research Area (ERA) is the ambition to create a single, borderless market for research, innovation and technology across the EU.

It helps countries be more effective together, by strongly aligning their research policies and programmes. The free circulation of researchers and knowledge enables

- better cross-border cooperation
- building of critical mass
- continent-wide competition

ERA was launched in 2000 and a process to revitalise it began in 2018.

ERA - Start



Phase 1 MORE COHERENCE, LESS FRAGMENTATION | 2000 - 2007

Towards a European Research Area

'The problem is not money but fragmentation of the efforts carried out at European level... So it is imperative that we mobilise resources and create a movement towards coherence of research policies in Europe. This is why I have launched the idea of a European Research Area.'

Commissioner **Philippe Busquin**, 18 November 2000

FOCUS

A better organisation of research in Europe by addressing the fragmentation, isolation and compartmentalisation of national research systems and the lack of policy coordination between Member States and the EU.

PRIORITIES

- Large scale research infrastructures
- coherent implementation of national and European research activities
- mobile human resources
- cohesion
- attractiveness of the European R&I system
- common social and ethical values

ACHIEVEMENTS

- New instruments of FP6,
- ERA-NET
- Article 185 and 187 initiatives
- EURAXESS
- European Charter for Researchers
- the Code of Conduct for Recruitment of Researchers



ERA - Concept of 'partnerships' – P2Ps

In European research and innovation (R&I) policy making, the concept of 'partnerships' has been used since the 6th EU Research Framework Programme (FP6; launched in 2002).

Under the FP6 one of the partnership forms introduced was the **ERA-NET instrument**

➤ **to allow coordination and cooperation of national and regional research programmes (public-to-public partnerships, P2Ps)**

➡ **This new instrument was also the starting point for the ERA-NET collaboration in the forest-based sector** with an official start date of 1 January 2004: WoodWisdom-Net (18 partners from 8 countries)



ERA - Concept of 'partnerships' - PPPs

Besides the P2Ps, in 2003 EU **public-private partnerships (PPPs) in research** were set up with two main objectives:

- 1) to address the fragmentation of research efforts between the private and public sector and across borders, and
- 2) to increase public and private investment in research activities to reach the target of 3 % of EU gross domestic product.

The first PPPs – the **European Technology Platforms (ETPs)** and the **Joint Technology Initiatives (JTIs)** – were developed to achieve these objectives.

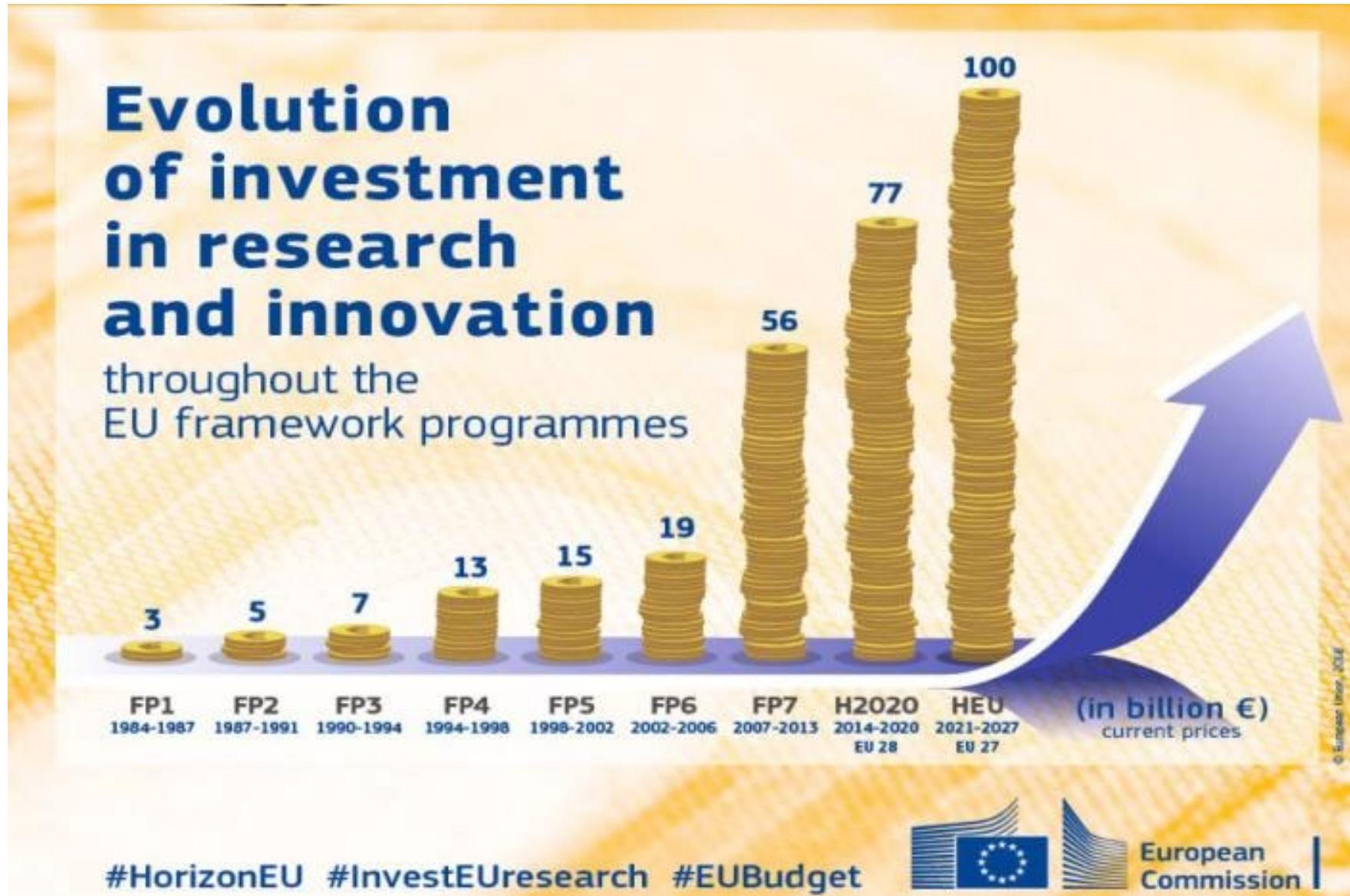
As the process to establish ETPs was bottom-up, flexible and industry-led, 25 ETPs were established in the first two years on various topics (from nanomedicine to road transport), one of the topics on forestry:



Forest-based Sector Technology Platform (FTP) was established in 2005.



ERA – Investments throughout the EU FPs





ERA-NETS IN THE FOREST-BASED SECTOR

*

IN FP6, FP7 AND H2020



ERA-NET Scheme

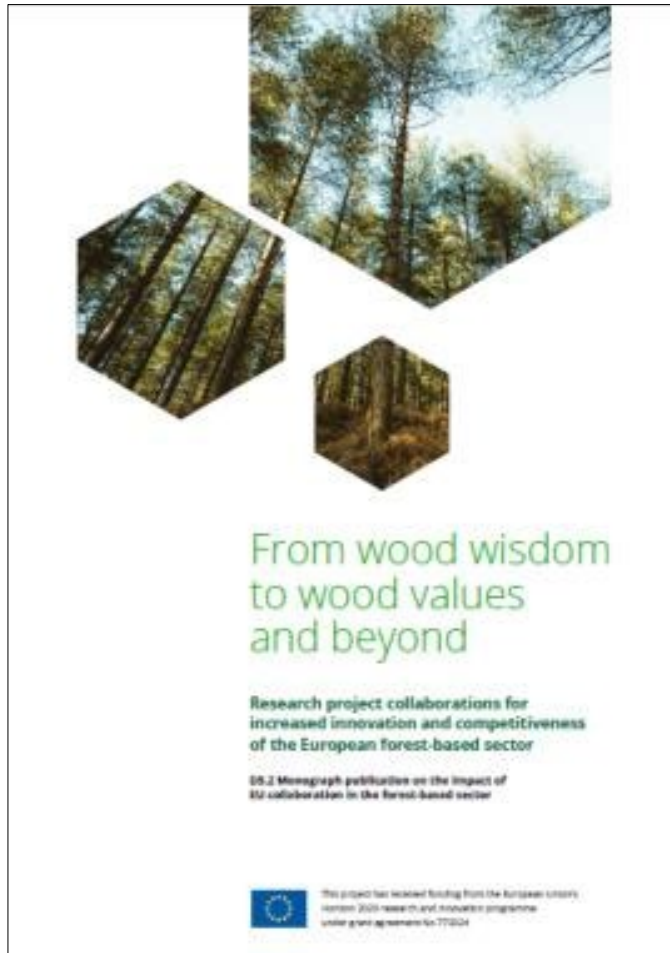
- The ERA-NET scheme aimed at developing and strengthening the coordination of national and regional research programmes.
- Under the ERA-NET scheme, national and regional authorities, represented by so-called 'programme owners' and/or 'programme managers', identified research programmes they wished to coordinate or open up mutually.

European forest research has benefited from six ERA-NETs since 2004





ERA-NETs in the fbs – Impacts

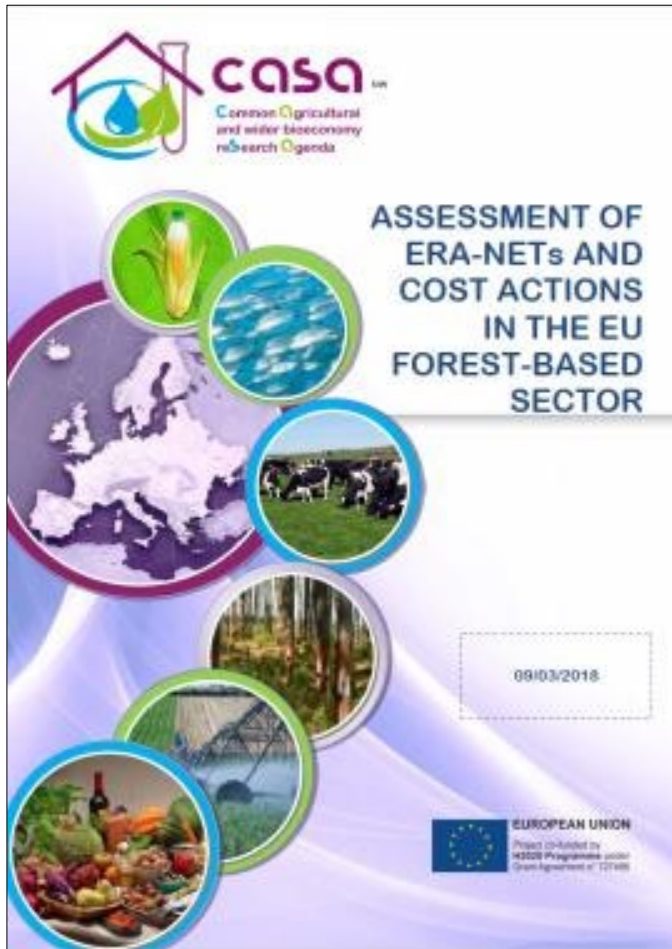


For more information on the ERA-NETs in the forest-based sector and their achievements, please check the **Monograph publication on the impact of EU collaboration in the forest based sector, entitled [‘From wood wisdom to wood values and beyond’](#)**.

Among other things, the publication includes contributions from eminent experts and coordinators of past and current projects who were invited to share their experiences and expert opinions not only on the achievements of individual transnational project collaborations, but also on the impacts achieved on the development of research and innovation in the forest-based sector, on societal and bioeconomic development, and on the achievement of the Sustainable Development Goals (SDGs).



ERA-NETs in the fbs – Some conclusions (1/2)



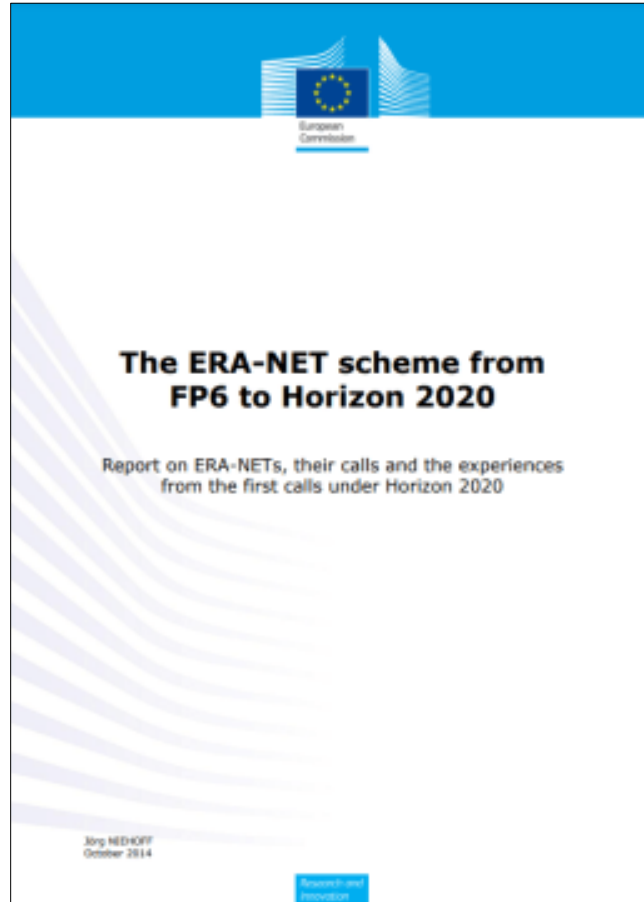
- **Flexibility for funding organisations**
- **Bottom-up approach suited to the forest-based sector**
- **Boosting European excellence and knowledge in areas of high relevance**
- **Participation of new member states**
- **International outreach**
- **Industry participation**
- **Manageable projects**
- **Research efficiency and European complementarity**

In conclusion, it has to be underlined that specifically for the European forest-based sector, which is largely composed of SMEs, the ERA-NET scheme has been the essential backbone for research and development activities.

Kleinschmit von Lengefeld, Andreas & Kies, Uwe, 2018. Assessment of ERA-Nets and COST actions in the EU forest-based sector. SCAR CASA Study for SWG Forest. FCBA Institut Technologique & InnovaWood.



ERA-NETs in the fbs – Some conclusions (2/2)



There are two issues that deserve further attention:

1. Unbalanced commitments from Participating States

- The initial commitment of a country to a call is not proportionate to the research capacity of the country in question.
- A low number of successful projects resulting from a call do not allow a country to fully use its initial commitment.
- A country does not participate in a call, since their high ambitions for funding to achieve critical mass and expected impacts are not matched by financial commitments of others.

2. Need to improve knowledge on impacts of ERA-NETs and the projects they are funding

- The same applies for the other P2P initiatives like JPIs or Art.185 initiatives.



FORESTVALUE2

INNOVATING FOREST- BASED BIOECONOMY



ForestValue2:

ForestValue2

Grant agreement ID: 101094340

DOI

[10.3030/101094340](https://doi.org/10.3030/101094340)

Start date

1 January 2023

End date

31 December 2027

Funded under

Reforming and enhancing the European R&I System

Total cost

€ 2 264 695,00

EU contribution

€ 2 264 695,00



Coordinated by

MINISTRY OF AGRICULTURE AND FORESTRY OF
FINLAND

+ Finland



ForestValue2 – Transition (1/2)

Sept 2021, a letter from the European Commission “**Opportunity to get engaged in the new approach to European Partnerships in a bottom-up manner**”:

“[...] the Commission has proposed, as an integral part of its new approach to European Partnerships to launch a yearly call for proposals for programme level collaboration between national R&I programmes. This will support policy makers at national and regional level to carry out activities aiming at coordinating their R&I funding programmes and in this way to pool their resources and align their policies and priorities. Most importantly, it offers the opportunity to develop such activities on topics of their own choice and thus operates in a bottom-up manner.”



ForestValue2 – Transition (2/2)

- ✓ **ForestValue ERA-NET Cofund will officially end on 31 March 2023**, latest joint call for proposals targeted for forest sector launched in 2021, **no further joint calls in the pipeline.**
- ✓ There is no guarantee what will happen with our efforts for a European R&I Partnership on forests and forestry, and even if we would be successful with it, the Partnership could still get started only after several years from now (at earliest in 2025, with the first joint calls opening most probably only in 2026 > A gap of quite a few years in our possible joint R&I funding to forest sector, unless we would come up with something else).
 - **A new CSA project would ensure a launch of at least one joint call targeted for forest sector during 2023-2025.**
 - A new CSA project would serve as an optimal platform to continue assembling all the things that need to come together for a possible future European R&I Partnership on forests and forestry, **especially among the participating national funding agencies.**



ForestValue2 – Project objectives

ForestValue2 is to contribute

- i. to provision of a shared and robust knowledge base to make Europe's transition to being the first climate neutral continent by 2050 a reality, and
 - ii. overcoming the fragmentation of public research efforts in the EU and to reinforce work on research priorities that call for a stronger coordination and collaboration.
-
- ✓ **Encouraging wide engagement, in particular early-stage researchers and EU widening countries, the CSA will strengthen the ERA.**

 - ✓ **The project has four main objectives:**
 - Identification of common research and innovation priorities agreed among the participating national and regional R&I programmes in the area of forest-based bioeconomy, taking into account international developments where relevant;
 - Implementation of a joint call(s), resulting in the funding of transnational collaborative R&I projects;
 - Implementation of other joint activities supporting the market, regulatory or societal uptake based on forest science results
 - A multi-actor approach in addressing Global Challenges, including relevant contribution to the SDGs.



ForestValue2 – Consortium (1/2)

- ForestValue2 brings together **14 owners and managers of national and regional RDI programmes in 11 EU Member States** - FI, IE, DE, ES, SI, LV, PL, SK, IT, EE, RO - **and in one Associated Country** - Norway.
- **Six of the partners come from the widening countries**, whilst at the same time representing the BIOEAST Initiative.
- ForestValue2 will address “improving access to excellence” through **a portfolio of actions that aim at building up R&I capacities especially in EU13 and Ukraine and Republic of Moldova**, to enable them to advance to the competitive edge at European and international level.



ForestValue2 – Consortium (2/2)

1. **MMM** - Ministry of Agriculture and Forestry (**FI**), Project Coordinator
2. **DAFM** - Department of Agriculture, Food and the Marine (**IE**)
3. **FNR** - Agency for Renewable Resources (**DE**)
4. **AEI** - State Research Agency (**ES**)
 - 4.1 **FECYT** - Spanish Foundation for Science and Technology (**ES**; Affiliated Entity)
5. **MVZI** - Ministry of Higher Education, Science and Innovation (**SI**)
6. **RCN** - The Research Council of Norway (**NO**)
7. **LAAFS** - Latvian Academy of Agricultural and Forestry Sciences (**LV**)
8. **NCN** - National Science Centre (**PL**)
9. **NFC** - National Forest Centre of Slovakia (**SK**)
10. **CREA** - Council for Agricultural Research and Economics (**IT**)
11. **MASAF** - Ministry of agriculture, food sovereignty and forestry (**IT**)
12. **MoE** - Ministry of the Environment (**EE**)
13. **INCDS** - National Institute for Research and Development in Forestry “Marin Drăcea” (**RO**)

ForestValue2 – Joint Call 2023



ForestValue2

JOINT CALL FOR
RESEARCH PROPOSALS
IN 2023

CALL TEXT



Grant agreement ID: 101015140

<https://forestvalue.org/>

The Call has two themes

- Theme 1 – Resilient sustainable forest systems and management
- Theme 2 – Sustainable timber building systems

Indicative public funding of up to 7 million €

Schedule

- 2 May 2023 – Call launch
- 01.09.2023 - Deadline for submission of proposals
- Sep – Dec 2023 - Proposal assessment in 3 steps
- End of December 2023 - Assessment results to applicants
- First half of 2024 - National contract negotiations; research grants awarded, projects start

Note. This Joint Call is a self-sustained call i.e. the funding for the call will come from the participating funders only without a co-funding element from the European Commission.

ForestValue2 – More

<https://forestvalue.org/>



[@ForestValue2](#)



[ForestValue2](#)







EUROPEAN PARTNERSHIPS IN HORIZON EUROPE

What are European Partnerships?

- By bringing private and public partners together, European Partnerships help **to avoid the duplication of investments** and **contribute to reducing the fragmentation of the research and innovation landscape in the EU.**
- The partnerships **launch joint RDI calls for proposals and develop joint additional activities** which are **included in the partnership's Strategic Research and Innovation Agendas.**
- Depending on the type of the partnership, the calls may be open to everyone or just for the participants coming from countries with funding agencies participating in the Joint Call.



Partnerships across areas

- The partnership candidates are collected mainly across the below 4 areas.
 - CLUSTER 1: [HEALTH](#)
 - CLUSTER 4: [DIGITAL, INDUSTRY & SPACE](#)
 - CLUSTER 5: [CLIMATE, ENERGY & MOBILITY](#)
 - CLUSTER 6: [FOOD, BIOECONOMY, NATURAL RESOURCES, AGRICULTURE AND ENVIRONMENT](#), some partnership examples:
 - Circular Bio-based Europe ([CBE](#)), Institutionalised European Partnership
 - Rescuing Biodiversity to Safeguard Life on Earth ([Biodiversa+](#)), Co-funded European Partnership



Types of partnership

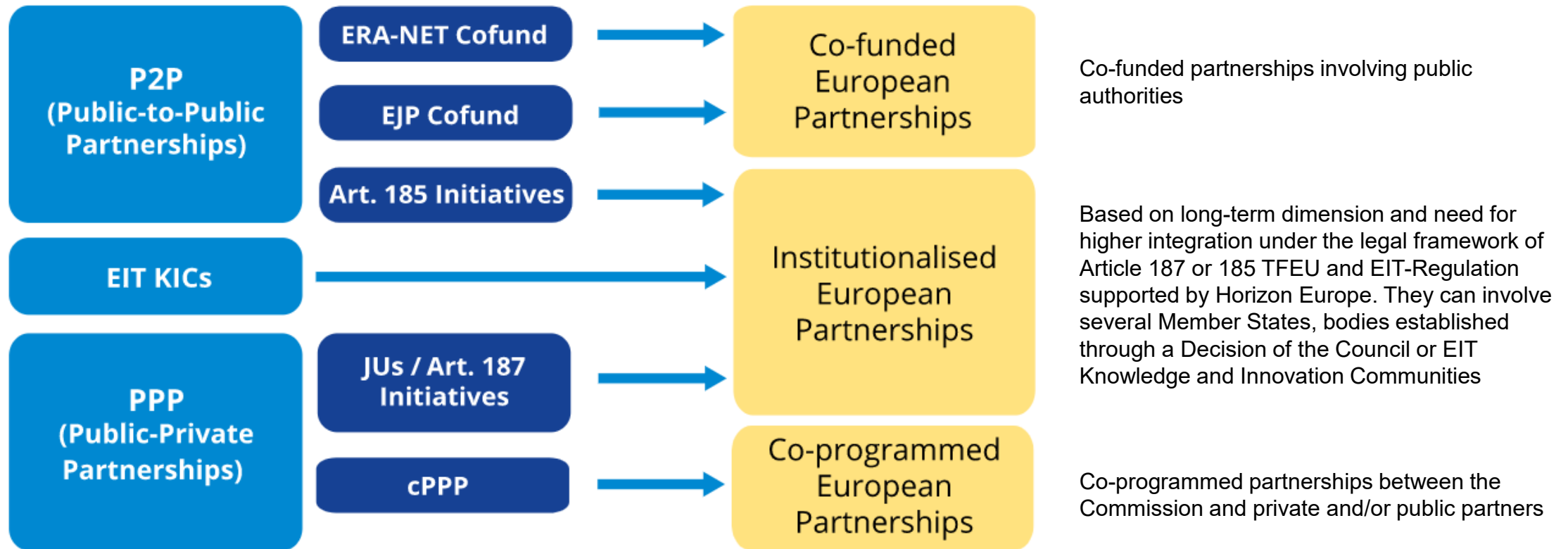
- **CO-PROGRAMMED**
 - Implemented in calls for proposals published in the Work Programme Horizon Europe
 - Calls are open to all eligible applicants
- **CO-FUNDED**
 - Implemented by the consortium of partners in activities under their responsibility, including calls for proposals (co-funded by EU)
 - Calls not open for all applicants
- **INSTITUTIONALISED**
 - Articles 185 and 187: managed and implemented by structures created for their implementation 185 ja 187; EIT KICs
 - Calls are mainly open to all potential applicants



Partnerships H2020 vs. Horizon Europe

Horizon 2020

Horizon Europe





Co-funded partnerships

- Legal form: Grant Agreement (programme co-fund action) signed between a consortium of beneficiaries and the Commission (executive agency)
- Implementation: Member States would design a common R&I programme to be implemented under their responsibility. It **pools national funding/resources with co-funding from the Union.**
- Funding rate (EU top-up funding): 30% (in justified cases higher)
- Calls and evaluations are organised centrally, **beneficiaries in selected projects are typically funded at national level** (on the basis of rules agreed by partners)
- Important to define ex-ante:
 - Types of partners that are needed to form the partnerships (consortium)
 - Stakeholders that provide input (e.g. priority setting) > **role of ministries!**
 - Stakeholders and target groups that are addressed/ involved by the activities implemented

Common characteristics for all partnership types



- **Strategic orientation**
 - EU policy goals (for example: Green Deal, Europe fit for digital age)
 - Other relevant/linked strategies (for example: Circular Economy Action Plan)
- Joint criteria
 - For example: selection of partnerships, monitoring etc. (Horizon Europe regulation Article 8 & Annex III)
- Key conditions for partnerships
 - Ex ante demonstration of directionality (partner's common strategic vision, underpinned by **Strategic Research and Innovation Agenda/ Roadmap**)
 - Ex ante demonstration of additionality (**long term commitment from partners to mobilise and contribute resources and investments**)
- Implementation is based on annual work programmes or equivalents (roadmaps)
 - **Translation of SRIA into annual priorities and activities**
- Systemic approach
 - **Portfolio of activities that goes beyond collaborative R&I projects**



Candidate European R&I Partnership on Forests and Forestry for a Sustainable Future.

Candidate
European R&I
Partnership on Forests
and Forestry for a
Sustainable Future

**New EU Forest
Strategy for 2030,
Brussels, 16.7.2021:**

In order to strengthen EU cooperation, a research and innovation partnership on forestry will be proposed to overcome the fragmentation of public research efforts in the EU and to reinforce work on research priorities that call for a stronger coordination.

The Commission will enhance EU cooperation by proposing a Research and Innovation partnership on forestry, including flagships for testing and demonstrating solutions on selected key strategic domains.



HE partnerships landscape



1st HE Strategic Plan (2021-2024)

- 49 candidate partnerships selected
- 8 selected in Cluster 6 (Food, bioeconomy, natural resources, agriculture and environment)
- Some of them of interest for forests:
 - Agriculture of data partnership
 - Biodiversity partnership
 - Partnership for a circular bio-based Europe
- The proposal for a partnership « Future Forests and Forestry » not selected

2nd HE Strategic Plan (2025-2027)

New EU Forest Strategy for 2030 (in July 2021):

Objective to “enhance EU cooperation by proposing a Research and Innovation partnership on forestry, including flagships for testing and demonstrating solutions on selected key strategic domains”



“In order to strengthen EU cooperation, a research and innovation partnership on forestry will be proposed to overcome the fragmentation of public research efforts in the EU and to reinforce work on research priorities that call for a stronger coordination. The contribution of up to EUR 1 billion of Horizon Europe will be combined with the complementary private investment in the future Circular Bio-based Europe Partnership to boost such innovative and resource efficient bio-based materials and products that have strong potential to substitute their fossil based counterparts. Forest-based projects should help diversify the income of forest owners and managers, and increase the sustainability and circularity of the forest-based economy.”



The forest partnership is currently a candidate partnership idea

- Partnership fiche (draft concept paper of 4-6 pages) developed since Sept 2022 (still a working doc)
- By the SCAR SWG FOREST (Strategic Working Group on Forests of the Standing Committee on Agricultural Research)
- With comments from the European Commission (DG AGRI, RTD, ENV, CLIMA, GROW and JRC)
- Co-funded partnership



Research and innovation

[Home](#) > [News](#) > [All research and innovation news](#) > [Commission proposals for new candidate European Partnerships are now public](#)

NEWS ARTICLE | 17 July 2023 | Directorate-General for Research and Innovation

Commission proposals for new candidate European Partnerships are now public

Preparations of new European Partnerships that will be launched during the second half of Horizon Europe have reached an important milestone this week, when the European Commission presented [10 proposals for new candidate partnerships](#) ^(EN) to Member States and Associated Countries:

https://research-and-innovation.ec.europa.eu/news/all-research-and-innovation-news/commission-proposals-new-candidate-european-partnerships-are-now-public-2023-07-17_en

Rationale for the “Forests and Forestry for a Sustainable Future” Partnership

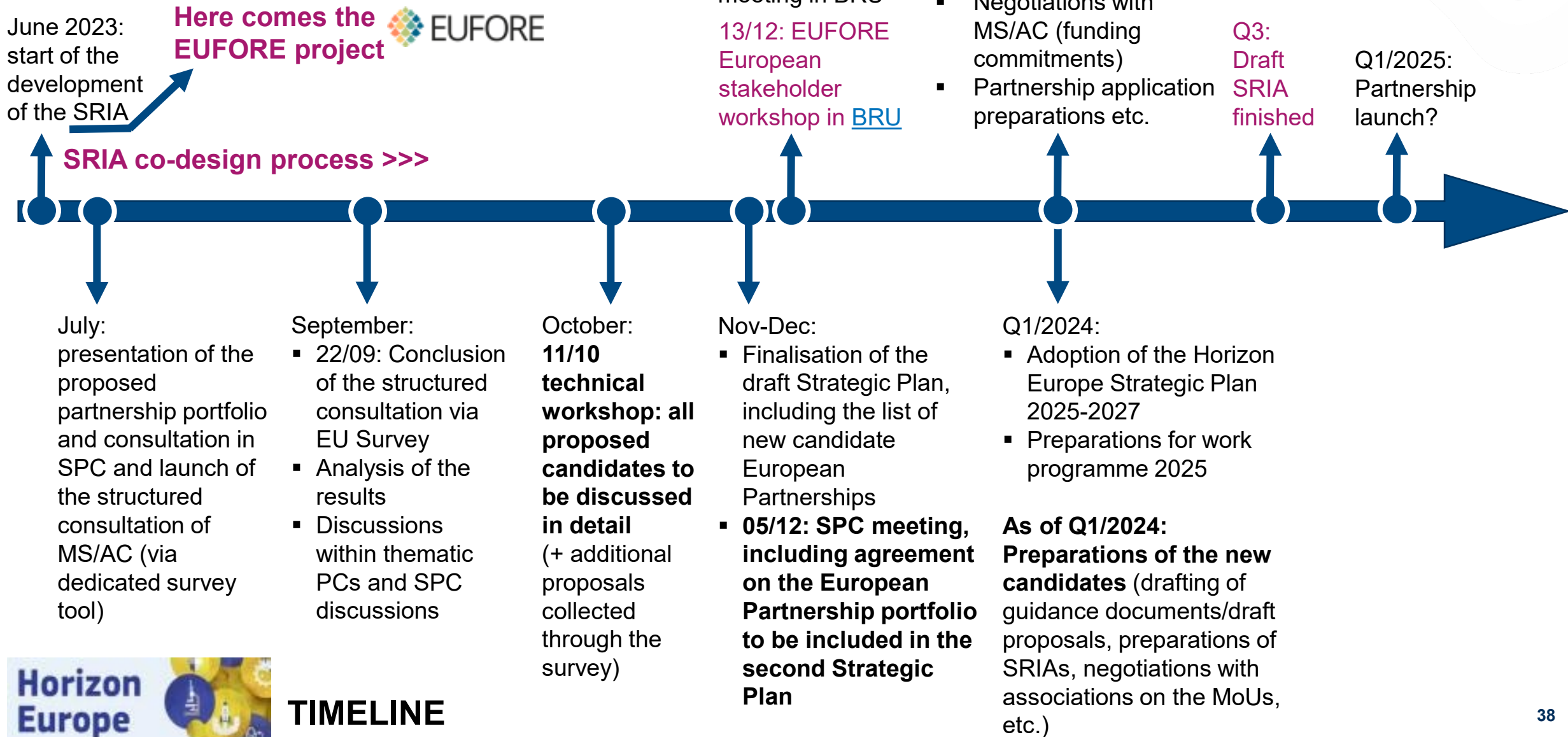


- The European Partnership is **an objective of the EU Forest Strategy** and will build a strong forest research and innovation community that interconnects people/entities and a wide spectrum of scientific disciplines to reinforce the work on the European priorities such as nature restoration, climate change mitigation and adaptation.
- A European Partnership is required to **ensure a holistic and balanced approach regarding the multiple uses and benefits of forests and forestry in all parts of Europe while considering changing climate, environmental and socio-economic conditions.**
- Specific justifications:
 - Improved cross-coordination of the European R&I landscape.
 - Improved coordination across different areas and sectors.
 - Stronger focus on the processes that lead to transformations toward sustainability in the forest-based and bioeconomy sector at EU level, which will also be key to the forest industry’s long-term competitiveness, in the EU and globally.



Some tentative Partnership information

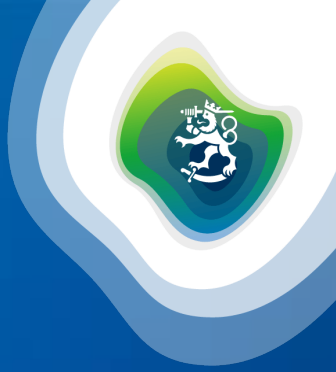
- Expected duration: 2025 – 2031 (seven years)
- Tentative contributions for the entire duration of the partnership (in EUR millions):
 - COM (EU) contribution 70 M€ (30%)
 - MS contributions 163 M€ (70%)
 - TOTAL 233 M€



Thank you.



For more information, please contact:



Mika Kallio

Project Manager

Ministry of Agriculture and Forestry | Information and
Research Division | Research and Legal Affairs

+358 (0)2951 62212 | mika.kallio@gov.fi

[@mikamkallio](#)