



Part of the
**Sustainable
Markets
Initiative**

THE CIRCULAR BIOECONOMY ALLIANCE

CONNECTING THE DOTS...

In the last 50 years, the biosphere upon which humanity depends has been altered to an unparalleled degree. Our current economic model, which relies on fossil resources and is addicted to “growth at all costs”, is putting at risk not only life on our planet, but also the world’s economy.

.....

**“We need to restore balance and put Nature
back at the centre of our economy”**

.....

A circular bioeconomy offers a conceptual framework for using renewable natural capital to holistically transform and manage our land, food, health and industrial systems as well as our cities.

Putting forward a new economic model will require transformative policies, purposeful innovation, access to finance, risk-taking capacity as well as new and sustainable business models and markets.

His Royal Highness The Prince of Wales has therefore established the **Circular Bioeconomy Alliance** under his Sustainable Markets Initiative to *accelerate the transition to a circular bioeconomy that is climate neutral, inclusive and prospers in harmony with nature.*

CONNECTING INVESTORS TO INVESTABLE SOLUTIONS

The Alliance provides knowledge-informed support as well as a learning and networking platform to connect the dots between investors, companies, governmental and non-governmental organizations and local communities to advance the circular bioeconomy while restoring biodiversity globally.

ACTIVITIES

The Circular Bioeconomy Alliance aims to accelerate the transformation to a global circular bioeconomy that prospers in harmony with Nature by:

- Raising awareness and inspiring action towards a circular bioeconomy: from nature-based solutions to reimagining our cities.
- Catalysing investments and connecting investors to companies, start-up and scale-up projects to bring the circular bioeconomy from niche to norm.
- Supporting governments to develop science-informed strategies to transition towards a circular bioeconomy.
- Demonstrating the potential of the circular bioeconomy through pilot projects and training modules.
- Accelerating land restoration initiatives such as the Afr. 100 and the 20 × 20.

WHAT IS A CIRCULAR BIOECONOMY?

A circular bioeconomy relies on healthy, biodiverse and resilient ecosystems. It aims to provide **sustainable wellbeing** through the provision of ecosystem services and the sustainable management of biological resources (plants, animals, micro-organisms and derived biomass, including organic waste). These are transformed in a circular manner into food, feed, energy and biomaterials – within the ecological boundaries of the ecosystems that it relies on.

The circular bioeconomy is powered by renewable energy and includes and interlinks holistically the following systems and sectors:

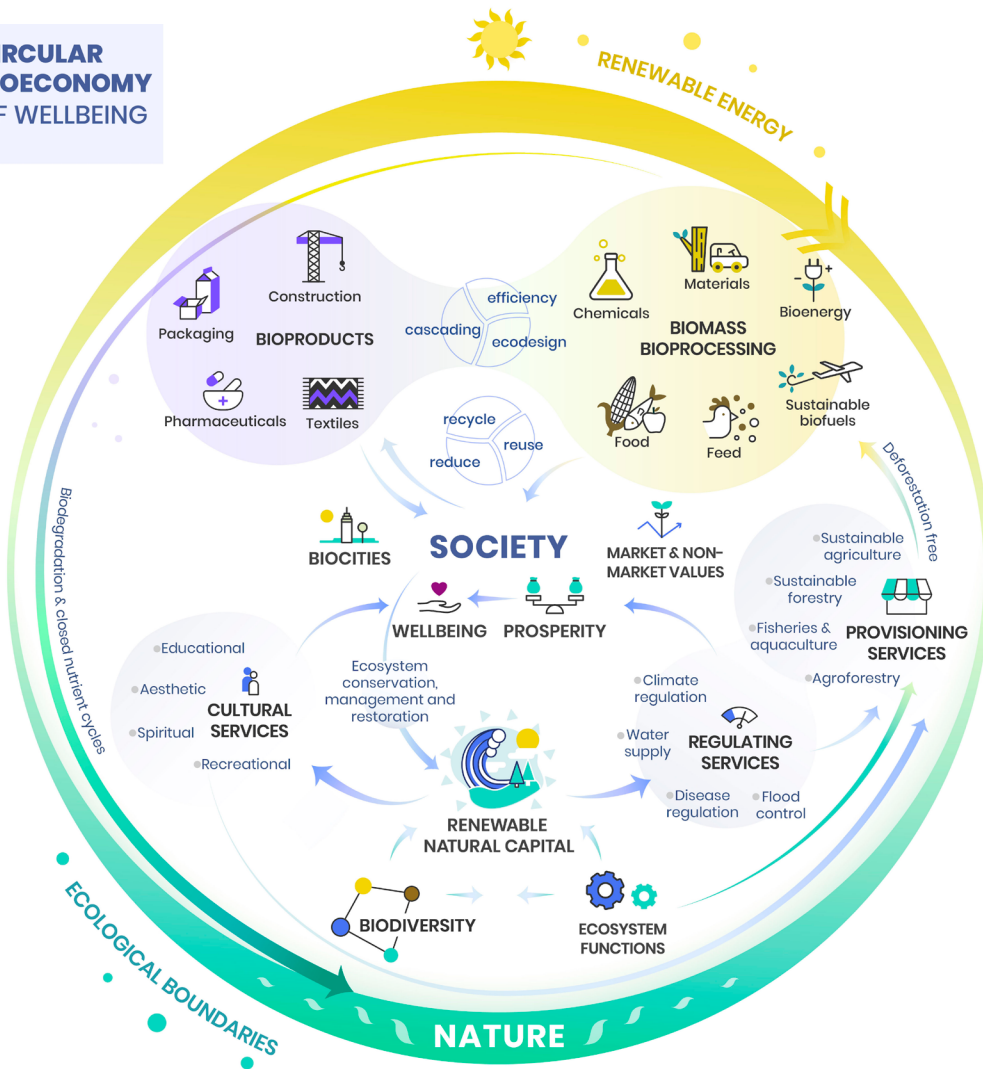
- land and marine ecosystems as well as green infrastructures and the services they provide in cities
- primary production sectors (agriculture, forestry, fisheries, aquaculture and aquaponics)
- economic and industrial sectors relying on biological resources and nature-based solutions (food, wood industry, bulk and speciality chemicals, construction, packaging, textiles, pharmaceuticals, bioenergy, and all sectors benefiting from biobased solutions or ecosystem services such as nature tourism or water supply).

MORE INFORMATION:

A 10-Point Action Plan for a Circular Bioeconomy of Wellbeing

CIRCULAR BIOECONOMY OF WELLBEING

©EFI



JOIN OUR WORK

The Alliance was established by His Royal Highness The Prince of Wales in 2020, and welcomes organizations sharing our vision and willing to become Members.

Members can make a monetary donation to the Alliance's Trust Fund.

Our Members include intergovernmental organizations, companies, investors, research organizations and NGOs providing expertise and implementing projects in areas related to the circular bioeconomy.

All Members subscribe to a Circular Bioeconomy Alliance Charter. The Alliance is facilitated by a Secretariat hosted by the **European Forest Institute** (www.efi.int).



Photo: Hugo Burnard

SITRA



AstraZeneca 

17  96

LOMBARD ODIER
LOMBARD ODIER DARIER HENTSCH



**New
Generation
Plantations**
TECHNICAL ASSISTANCE



WORLD
ECONOMIC
FORUM



WORLD
RESOURCES
INSTITUTE



WELLBEING
ECONOMY
ALLIANCE



Iaac
Institute for
advanced
architecture
of Catalonia

DC
DASOS CAPITAL
Enhancing EverGreen.



African Plantations for
Sustainable Development

Royal Botanic Gardens
Kew



sappi



**BALIPARA
FOUNDATION**
Assam • India



mirova
Investing in sustainability

CONTACT:

Marc Palahí
efisec@efi.int

Facilitated by EFI



EUROPEAN FOREST
INSTITUTE