

EIT Climate-KIC



How to boost the uptake of forest innovation  
by main stakeholders at regional level?

# Europe's biggest public-private partnership tackling climate change

Developing "end-to-end" innovation based on Knowledge Triangle Integration

- Equips **students and professionals** with the skills needed for the green economy
- Creates **start-ups** and accelerates the scaling-up of clean tech ventures
- Deliver **new products, services, knowledge frameworks and business models**

- Presence across 24 European countries for **climate action** and practical learning
- 215 active partners (corporates, SMEs, research institutes, public authorities and universities) and 2,000 alumni

From 2012 to 2016 :

- 989 business ideas incubated
- 203 start-ups created
- €337M external capital raised
- 2443 jobs in the green economy created



# Areas of work

We address climate change and develop innovation across four priority themes:

SUSTAINABLE PRODUCTION SYSTEMS



SUSTAINABLE LAND USE



EDUCATION



URBAN TRANSITIONS



DECISION METRICS & FINANCE

# EIT Climate-KIC

## Impact goals

Impact Goal 4:  
**Make agriculture climate-smart** Instigate a ten-fold increase in the application of climate-smart agriculture (CSA) solutions.

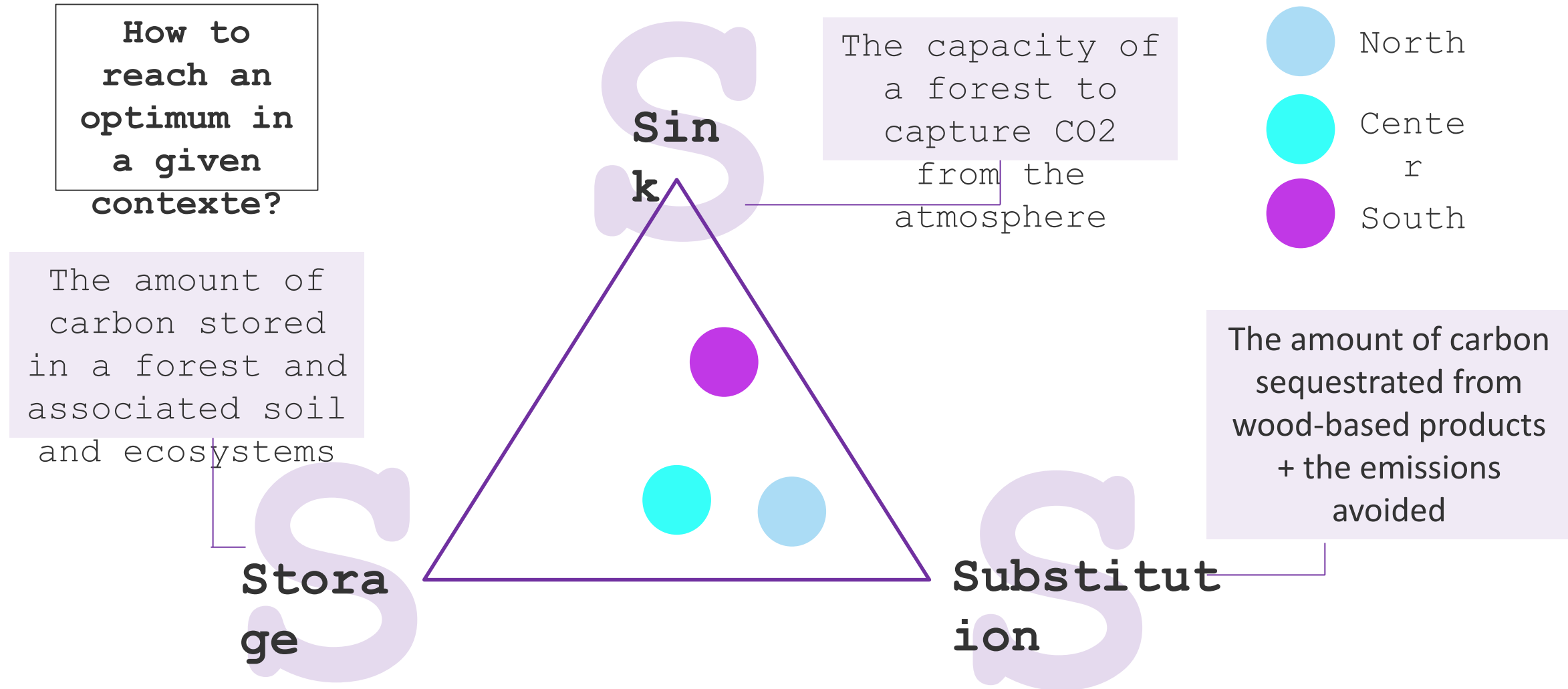
Impact Goal 6:  
**Nurture forests in integrated landscapes**  
Grow C sequestration in forests and linked value chains, avoiding deforestation.

Impact Goal 5:  
**Transform food systems**  
Transform climate-damaging food value chains and enhance the climate resilience of food supply.

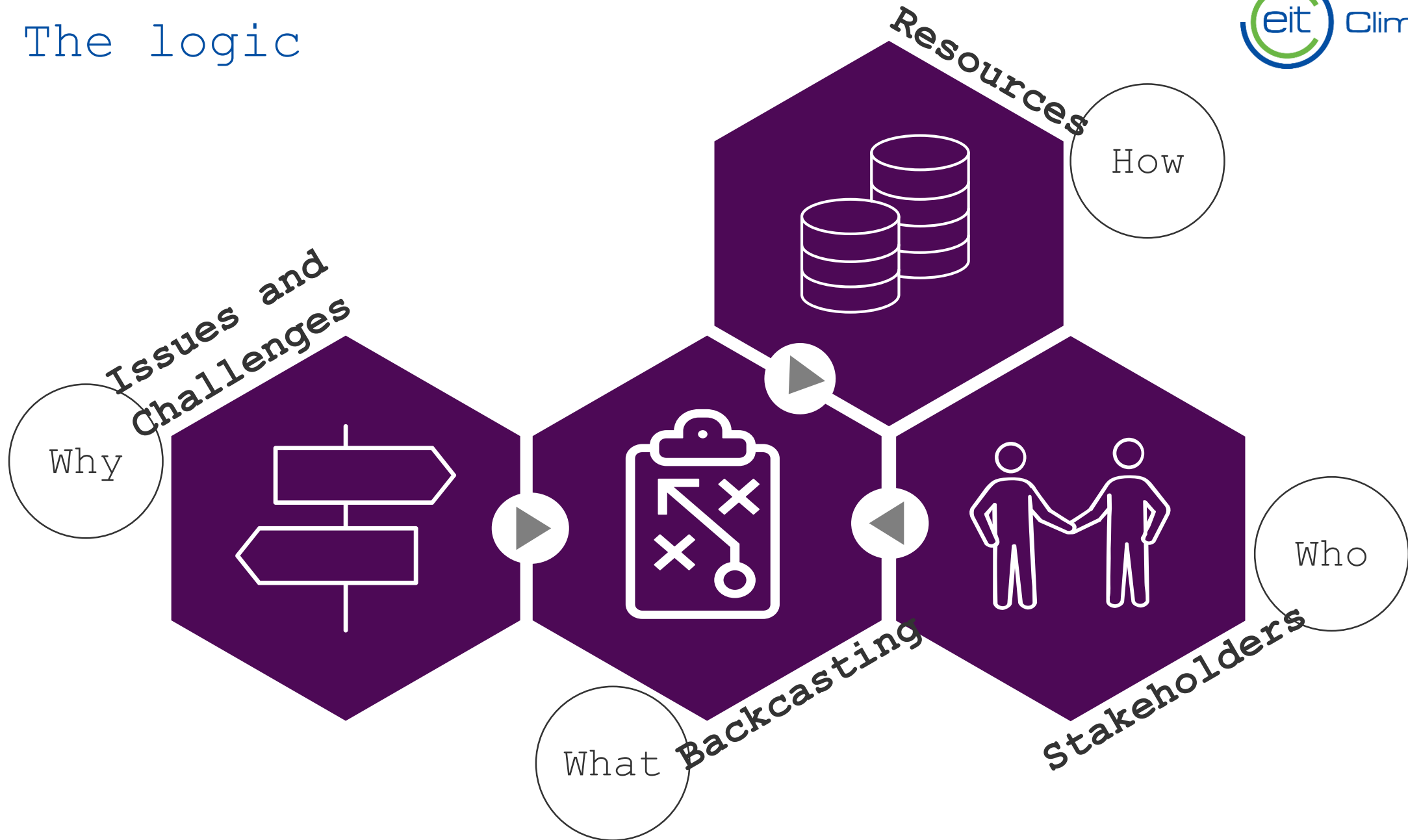
# 2018 – Launch of a new flagship programme on Forestry



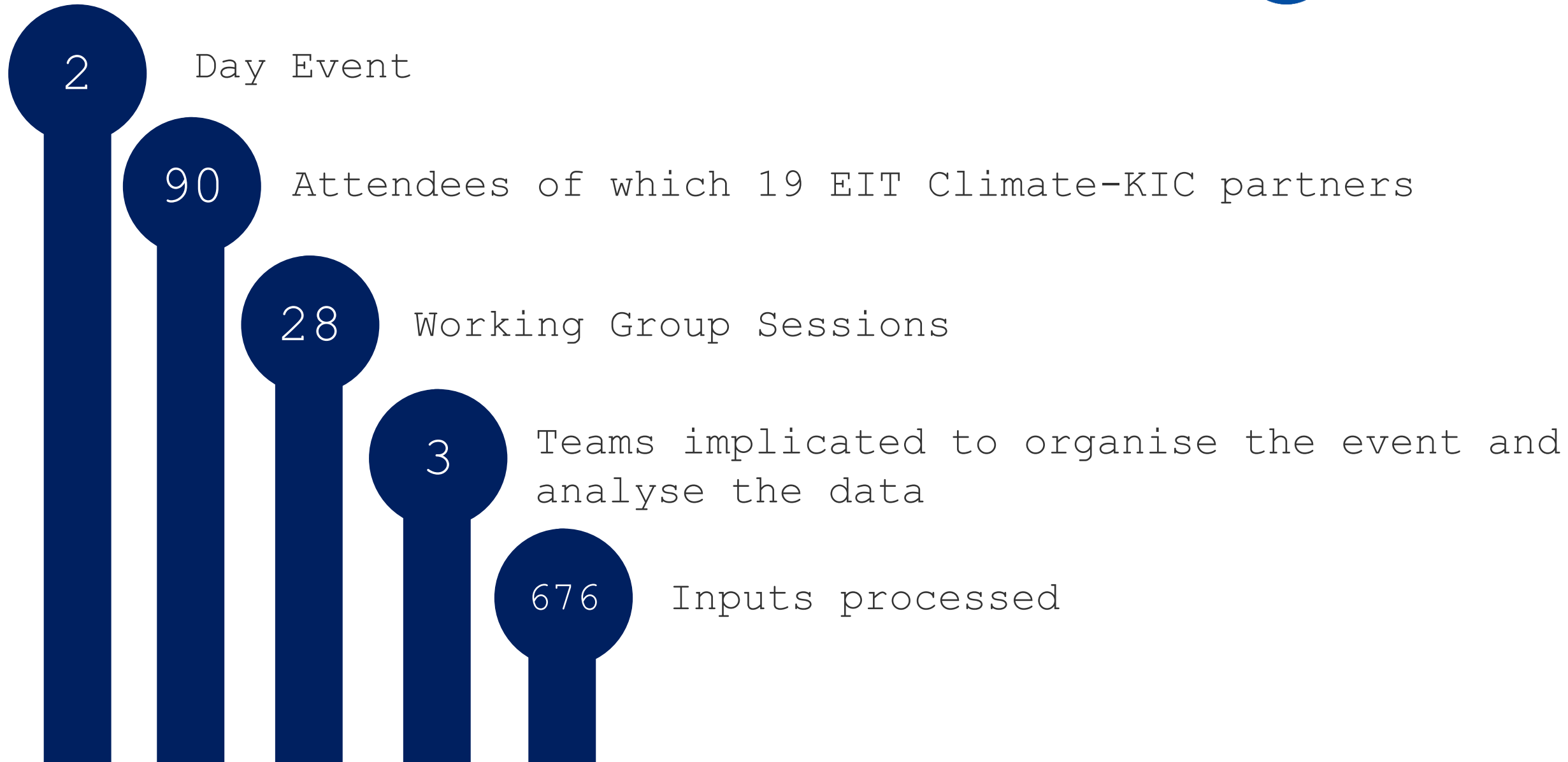
# The 3S – A reflection on the Vision



# The logic



# Highlights



# Challenges



1. Increasing sustainable harvest/exploitation rate of wood of European forests
2. Capture more value from forest products
3. Strengthen markets for forest-based products and make them more transparent
4. Mitigate the increasing hazards related to Climate Change
5. Unleash confidence and financial investments in forest-based value chains through future scenarios and policy support
6. Help decision making on value chains through a

# Issues & Challenges

Top 3 challenges voted during the Workshop for all regions

**Sustainable Management**

Challenge n°1

**Value Chain Downstream**

Challenge n°2

Challenge n°3

Challenge n°5

Challenge n°6

**Adaptation & Resilience**

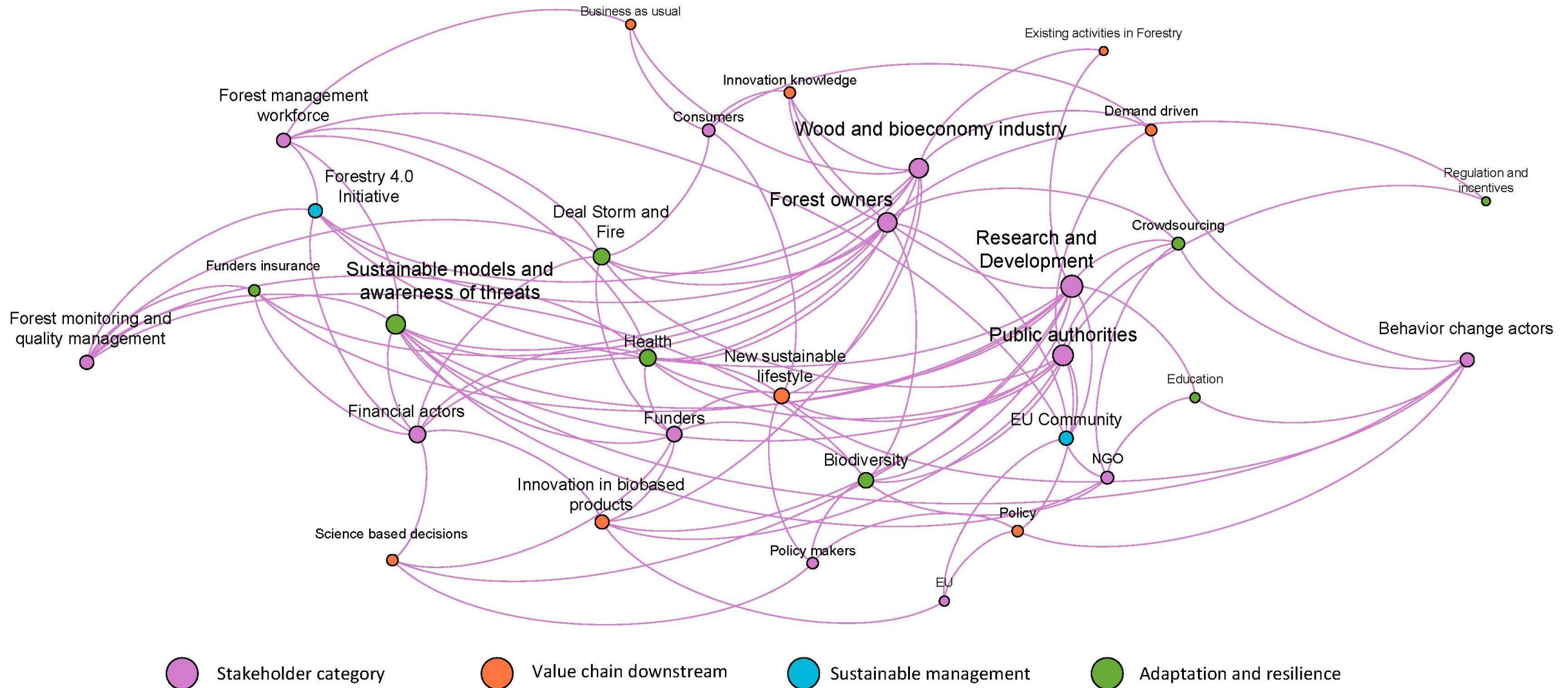
Challenge n°4

Challenge n°7

Most attractive challenges by location:

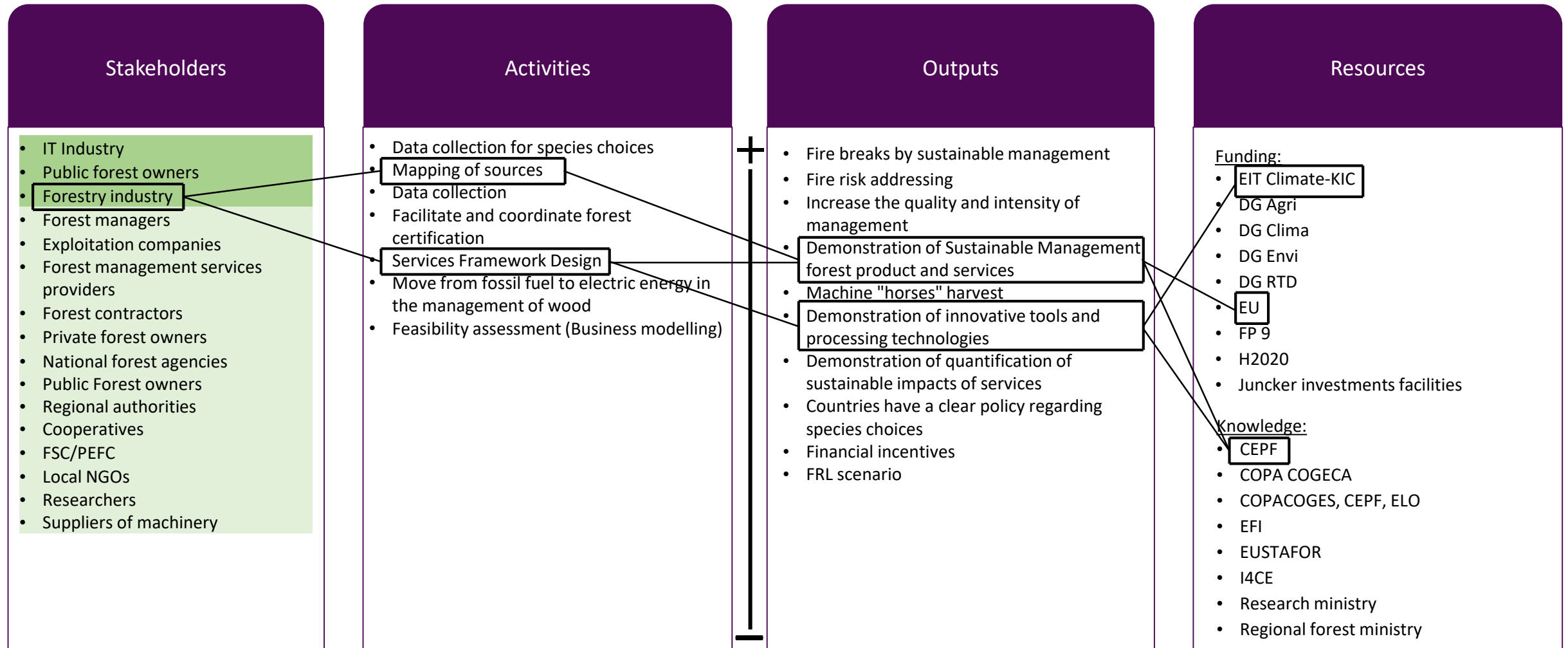
- North: Challenge 2, 7, 3, 6
- Center: Challenge 1, 4, 5, 2
- South: Challenge 1, 4, 5

# Broad Network Map for the Forestry Sector



# Example of Detailed Priority

Projects connected to the **sustainable management issue**: Forland, Electrification, Forvalor, TreeTime, WoodPicker, ForValor 2, Label Bas Carbone, FOREST



Thank you for your attention



Fabrizio.rossi@climate-kic.org



Climate-KIC is supported by the  
EIT, a body of the European Union