

Welcome to John Deere Forestry!



John Deere – Equipment Divisions



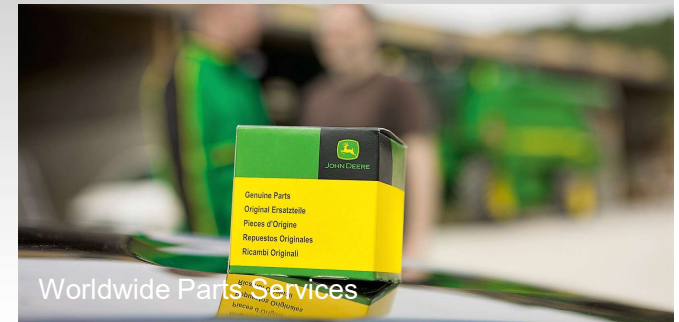
John Deere – Equipment Divisions



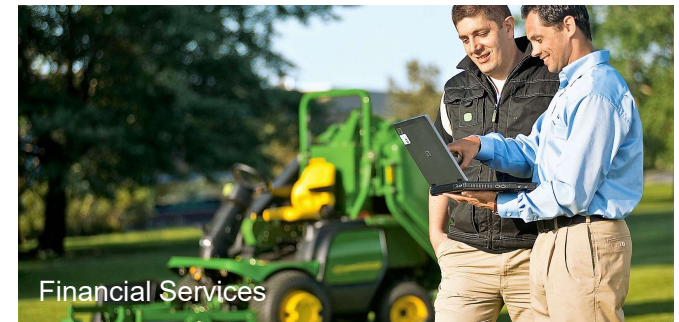
John Deere – Supporting Operations



Intelligent Solutions Group



Worldwide Parts Services



Financial Services



Power Systems

John Deere Factories and revenues



**Revenues 2018:
37,4 Billion USD**



HARVEST PROCESSES **MACHINE SYSTEMS**

Cut-To-Length System



**Fell &
Process**



**Fell &
Process**



Extract

Full Tree/CTL System – Canada/U.S.





WCTL Products

Wheeled Harvesters

1070G

1170G

1270G

1470G



Forwarders

910G

1010G

1110G

1210G

1510G

1910E

1910G



Harvesting and Processing Heads

H412

H413

H414

H415

H480C

H270 Series II

H215E

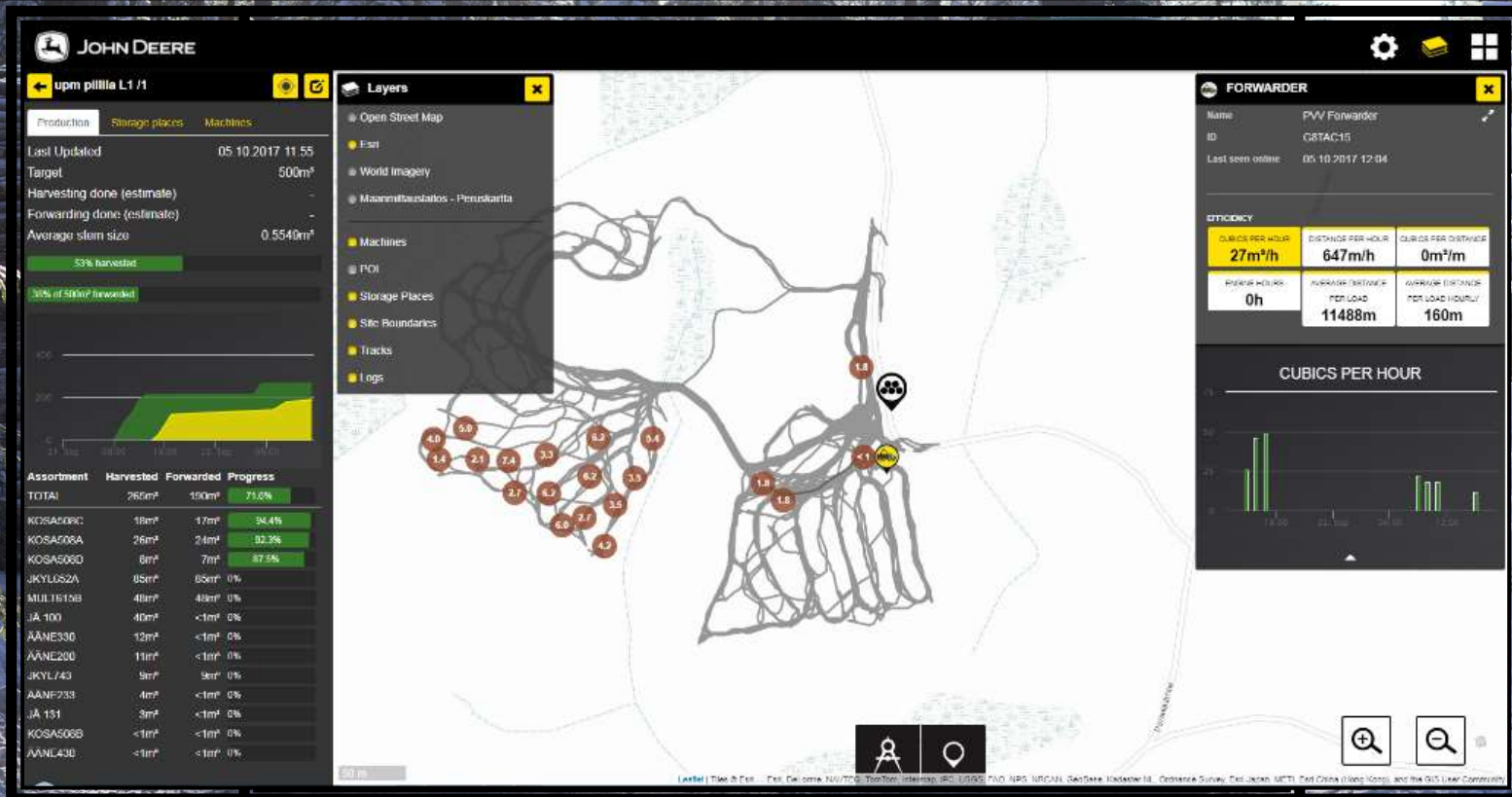
H290



SHORTER LEARNING CURVE.
JOY OF OPERATION.
IMPROVED PRODUCTIVITY.
IMPROVED FUEL ECONOMY.
LESS STRUCTURAL FATIGUE.

TIMBERMANAGER

CUSTOMERS CAN INTERACT WITH THEIR FLEET AND JOBSITES IN REAL TIME, ANYWHERE AND ANYTIME. OPERATIONAL EFFICIENCY AND PRODUCTION CONTROL WILL BE AT A WHOLE DIFFERENT LEVEL.

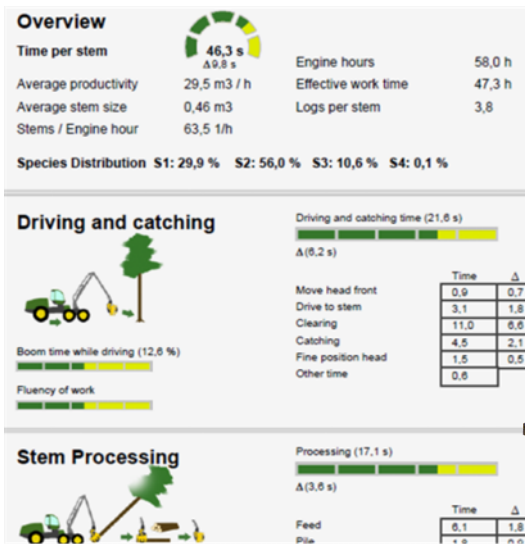




WCTL operations

Tampere Office

- 250 employees
- Research & Development, Product Verification & Validation, Sourcing, Quality, Product Support, Marketing & Sales, Order desk, IT, HR, Finance
- John Deere Construction & Forestry European HQ
- Finnish Retail HQ



Joensuu Factory

- Produces all John Deere CTL Forestry machines to global markets
- 85-90 % of products are exported
- 450 employees
- Manufacturing, Sourcing, Quality, Engineering, Order desk, HR, IT.
- Operational philosophy based on:
 - Quality
 - Build-to-demand
 - Flow line production
 - World class supply chains

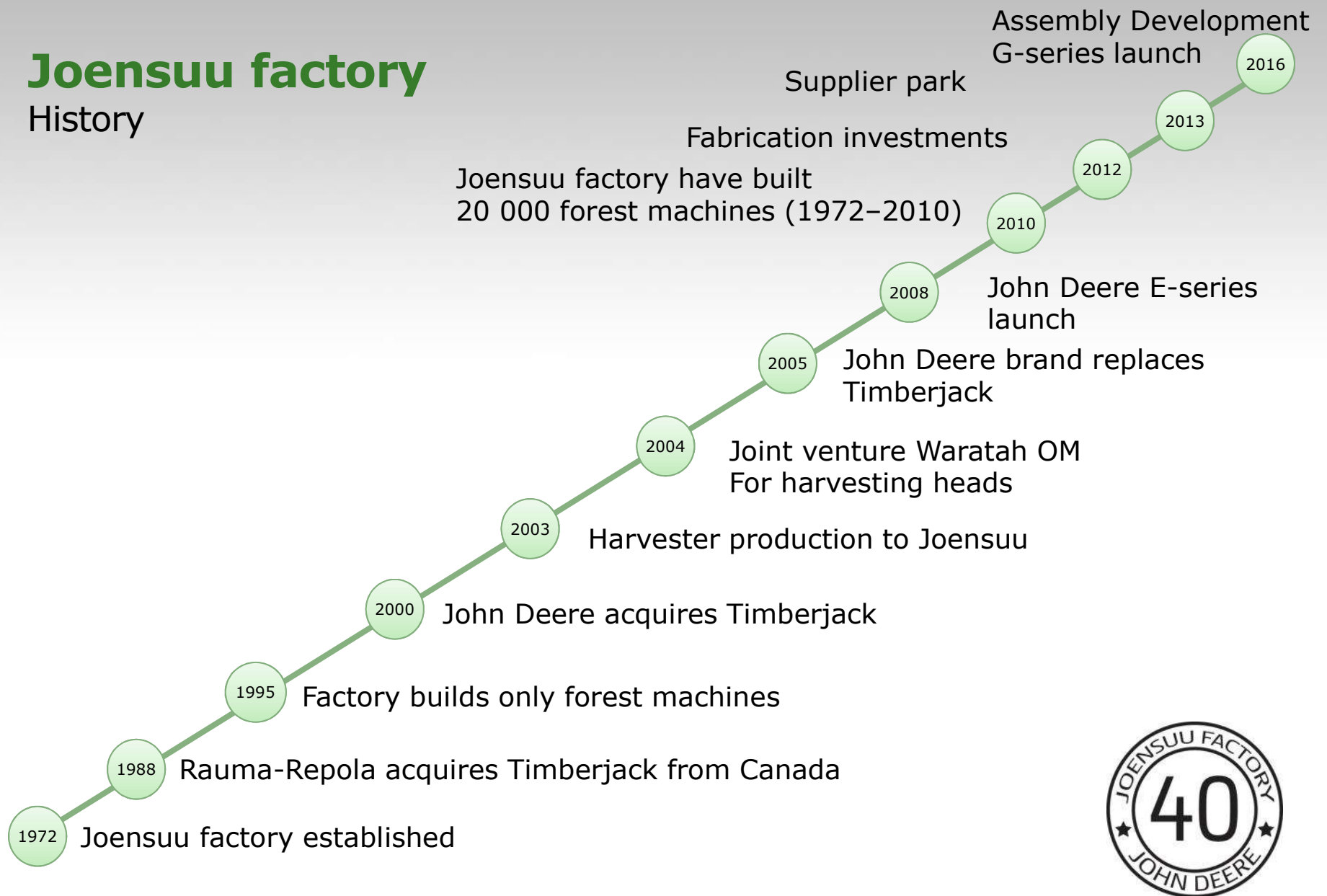


Joensuu factory area



Joensuu factory

History

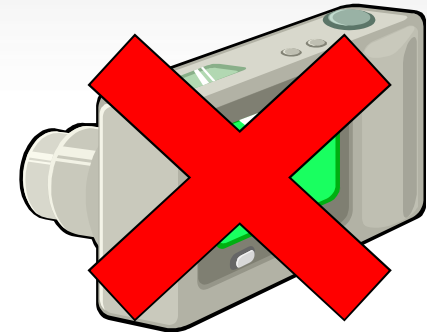


Safety during factory tour

High visibility vest

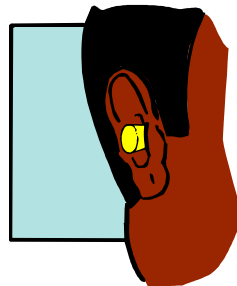


Safety glasses



No fotografing

Ear plugs or
Headset



or



Gloves



Non smoking factory!





JOHN DEERE