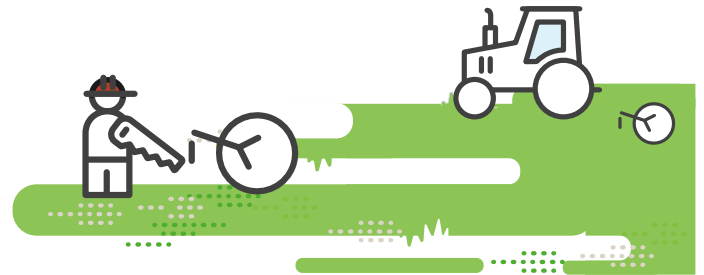




# Unpacking the geolocation requirements under the EU Deforestation Regulation

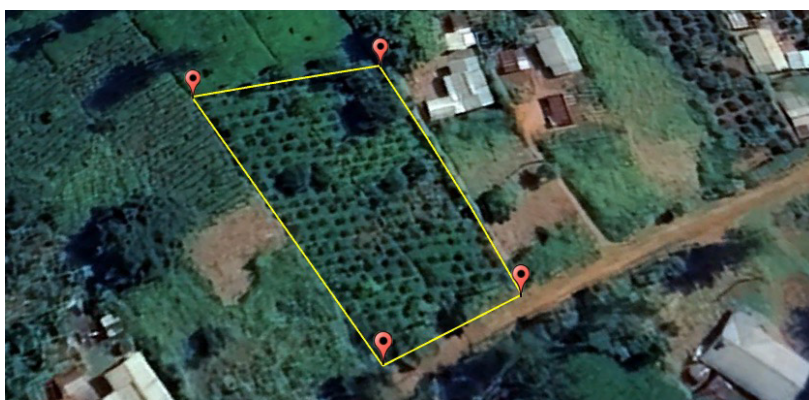
## EU Deforestation Regulation (EUDR)

The EUDR requires that **palm oil, coffee, cocoa, soy, cattle, timber and rubber** (and some derived products) placed on or leaving the EU market must be produced **legally and without being associated with deforestation or forest degradation**. Operators placing these products on the EU market must submit a due diligence statement demonstrating that these criteria are met. The EUDR enters into application on 31 Dec 2026 (mid-2027 for EU micro and small enterprises).



## Traceability & geolocation

To demonstrate that a commodity sold in the EU is deforestation-free and legal, it must be traceable to the plot of land where it was produced. Therefore, operators must include the **geolocation coordinates** (with six decimal points) for every plot the commodity came from in their due diligence statements. Products from plots without geolocation information cannot be placed on the EU market.



## Plot of land

A 'plot of land' is a single, contiguous piece of land where an agricultural commodity is produced (raised, grown, harvested). It can be any shape, as long as it has an unbroken border. Unconnected pieces of land are considered separate 'plots', even if they have the same owner. A farm can therefore be composed of different plots of land.

### Point vs. polygon

Geolocation coordinates show the physical location of a plot of land. They are needed to check if deforestation happened on that plot after the EUDR cut-off date (31 December 2020) and if production was legal.

The EUDR has different geolocation requirements for plots of different sizes:

Less than 4 hectares

Single point



The GPS coordinates (latitude and longitude) of a single point in the plot is enough to identify its location on a map.

More than 4 hectares

Polygon

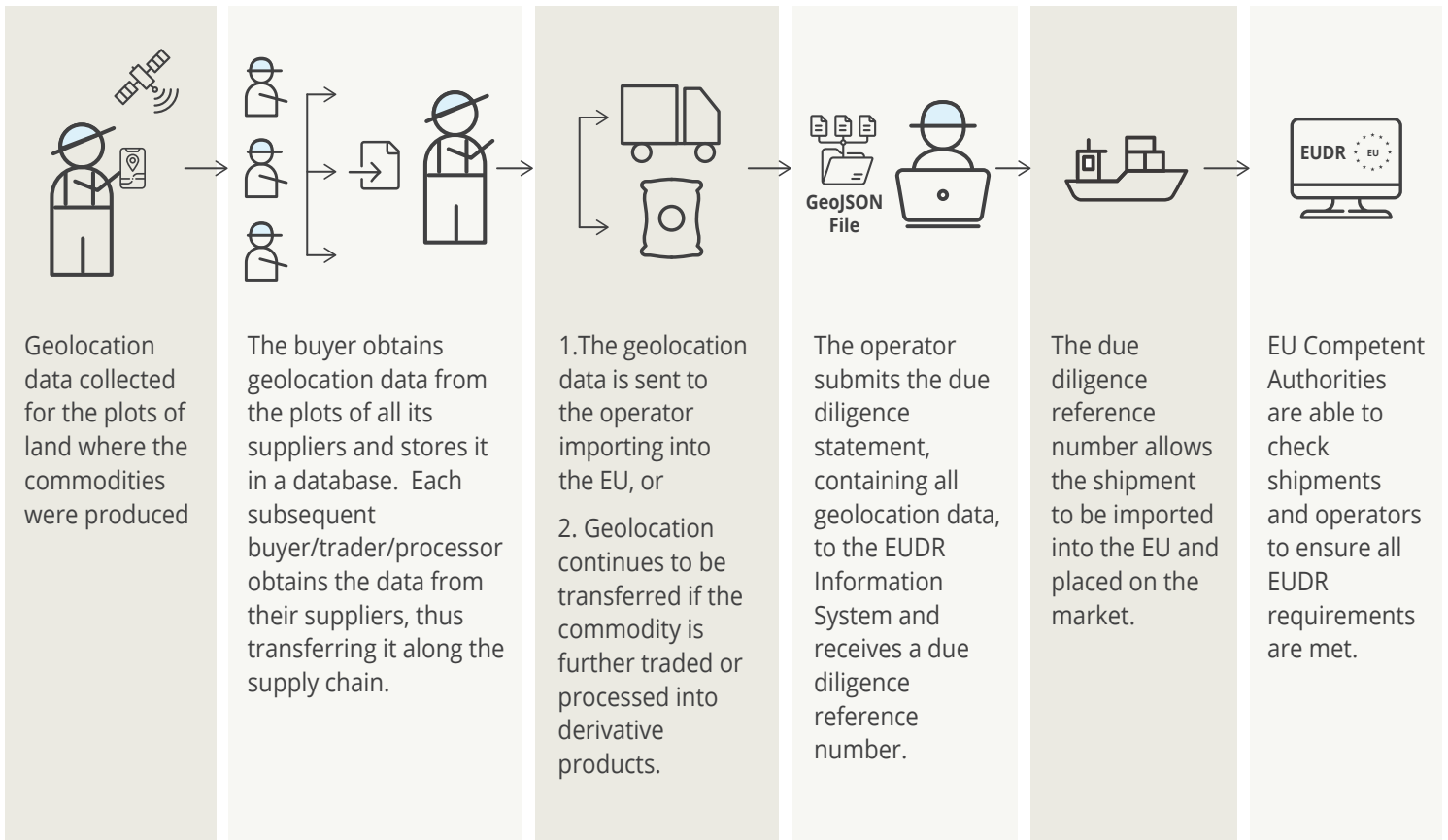


A polygon (comprising multiple GPS points) is required to delineate the boundaries of the plot.



### From plot to export

Geolocation data must be preserved and transferred along the supply chain by suppliers, traders and manufacturers during every transaction – including across borders when raw materials are sourced from third countries.



### EU Information System requirements

To complete their due diligence statements needed to place a relevant product on the EU market, operators must provide the geolocation data of all plots associated with the product in the official EU online system, either by manual entry or by uploading it in a GeoJSON file. The system will then give the operator a unique due diligence reference number, which must be shared along the supply chain.



### Common errors & verification

Some common errors can occur when collecting geolocation coordinates. Internal verification can help ensure the geolocation information received is accurate and error free.

Common errors		
Overlap	Unexpected gap	Wrong coordinate system / format

### Data protection and privacy

Data and personal information are processed and stored in the system under strict data protection rules. Personal data of third-country producers (e.g. names, addresses, ID numbers) are not part of the compulsory data to be provided, and are not shared along the supply chain. Operators and traders are not obligated to make the geolocation information visible to downstream economic operators.

**Disclaimer.** This factsheet has been produced by the European Forest Institute with the financial assistance of the European Union. The contents of this factsheet are the sole responsibility of the author and can under no circumstances be regarded as reflecting the position of the European Union.

