



EUROPEAN FOREST INSTITUTE

---

ANNUAL REPORT 2007

---



## OVERVIEW

### A year of expansion

2007 was a year of historic changes for EFI. The new strategy approved by the EFI Annual Conference paves the way for determined work in the fields of networking, research, information provision and advocacy. We aim to excel in all of these core activities.

Another landmark change came in the form of a decision to set up EFI Regional Offices in different parts of Europe. The first such office, EFIMED in Barcelona, was launched in June. EFI member organisations around Europe have already been invited to send in letters of interest concerning the possible establishment of other Regional Offices. This invitation has generated unexpectedly great interest, with seven proposals submitted.

The new Regional Offices will give EFI a much greater regional presence. In return, EFI will also be able to bring increasing visibility to regional



Risto Päivinen



Konstantin von Teuffel

issues at the European level. The Regional Offices will also facilitate the raising of funds for EFI's core activities.

EFI's future looks bright: there are clear signs that European countries are increasingly keen to invest in co-operation in forest research. This trend is reflected in the number of new ratifications of the EFI Convention in 2007. Five more countries have now ratified the convention, bringing the total number of countries on the EFI Council up to 17. These countries are: Austria, Bulgaria, Croatia, Czech Republic, Denmark, Finland, Germany, Latvia, the Netherlands, Norway, Portugal, Romania, Slovenia, Spain, Sweden, Turkey and the United Kingdom.

We are grateful to everyone from the EFI Headquarters, EFIMED, our Board, the Scientific Advisory Board, the Project Centres, and among our Associate and Affiliate Members, for their commitment and hard work during this milestone year of expansion and growth.

The countries on the EFI Council are: Austria, Bulgaria, Croatia, Czech Republic, Denmark, Finland, Germany, Latvia, the Netherlands, Norway, Portugal, Romania, Slovenia, Spain, Sweden, Turkey and the United Kingdom.



## IN 2007

- EFI's strategy for 2022 was approved.
- EFI's first Regional Office EFIMED opened in Spain.
- The EFI Council expanded to cover 17 European states.

## IN 2008

- Process to establish more Regional Offices is ongoing.
- Annual Conference focuses on networking and will be held in Orvieto, Italy.



Representatives of EFI Project Centres and Regional Office: Marc Palahí (Regional Office EFIMED), Jasper Schipperijn (EUFORIC), Ewald Rametsteiner (INNOFORCE), Christophe Orazio (IEFC), Jean-Michel Carnus (IEFC), Yves Birot (EFIMED), in front: Francisco Moreira (PHOENIX), Stuart Dedrick (ConForest), Inazio Martinez de Arano (IEFC).



The Scientific Advisory Board: Hubert Hasenauer, Antoine Kremer, Eeva Hellström, Ted Farrell, David Humphreys, Emil Cienciala, Göran Ståhl and Americo Carvalho Mendes.



EFI Board: Andrey Selikhovkin, Konstantin von Teuffel, Jim Lynch, Miroslav Benko, Cecil Konijnendijk, in front: Liisa Saarenmaa, Birger Solberg, and F.Xavier Ballabriga

## ADVOCACY

**EFI provides improved access for the research community to political and industrial decision-makers in Europe, thus enhancing support for the funding of scientific projects and programmes.**

The most prestigious process where EFI used its advocacy role was the Ministerial Conference on the Protection of Forests in Europe (MCPFE). The MCPFE has requested a statement from the scientific community for the purposes of a multi-stakeholder dialogue. The scientific community was represented by EFI, the International Institute for Applied Systems Analysis (IIASA), Bioversity International, the International Union of Forest Research Organisations (IUFRO), and United Nations University (UNU). EFI co-ordinated the drafting of the statement and was responsible for its presentation at the Ministerial Conference.

EFI is actively involved in the Platform Management and Communication groups of the Forest-Based Sector Technology Platform (FTP).

The EFI network is one of the three scientific networks represented in the FTP, the other two networks being the European Fibre and Paper Research Organisation (EFPRO) and Innovawood. The opportunity to provide advice and services via the FTP is very beneficial for EFI and our own network.

EFI's Brussels Office opened in the beginning of 2007, in the new European Forestry House established in the very heart of the city at Place du Luxembourg. Other occupants of the Forestry House include the Confederation of European Forest Owners (CEPF) and the European State Forest Association (EUSTAFOR). The EFI's Brussels Office will be run by the FTP Project Manager for the next three years.

EFI's membership of the EU Commission's Advisory Group on Forestry and Cork has made it possible for our Associate Members to pass on their comments via EFI on issues such as the key actions within the EU Forest Action Plan.



Vadim Goltsev, Päivi Pelli and Ilpo Tikkanen



Anne Toppinen and Andreas Kleinschmit von Lengefeld



Risto Päivinen and Katja Tröltzsch



Andreas Schuck, Lauri Vesa and Eero Mikkola



A full house at the EFI Annual Conference.

## RESEARCH AND DEVELOPMENT

**As an international research organisation with an impressive network of leading experts, we are in a good position to effectively address research issues of pan-European interest. The following highlights demonstrate our versatility and ability to take on new research challenges.**

Work on large integrated projects such as EFORWOOD progressed steadily in 2007. EFORWOOD covers the whole forest value chain, from growing trees to the use and recycling or disposal of wood products. The Forest Ecology and Management Research Programme has been actively involved in developing the Tool for Sustainability Impact Assessment (ToSIA), and contributed to the project's scientific co-ordination. Two prototype ToSIAs were launched during 2007, with their first results describing two simple forest wood chains in terms of economic, social and environmental indicators.

The FOPER project, which focuses on capacity building in forest policy, economics education and research in South-Eastern Europe, underwent an external mid-term review during 2007. The review found that the project is progressing well, and has already re-established networks among forest scientists that had been broken as a result of the region's recent conflicts. A new international Master's Degree Programme in Forest Policy and Economics was initiated in Sarajevo, Bosnia and Herzegovina, and continued

in Belgrade, Serbia, later in the year. In professional training, preparations were made for full implementation of training from 2008 onwards. Preparations were also made for five new research projects on forest conflicts, and for associated tailor-made training, in order to support research capacities. In line with the recommendations of the mid-term-review, the project has now been extended until 2009.

Other new areas of work include the development of a team to support the implementation of the EU FLEGT Action Plan. The Plan aims to establish voluntary partnerships with timber producing countries which will include commitments to a wide range of measures designed to combat illegal logging and license verified legal timber for export to the EU. As a neutral international organisation, EFI's role will be to facilitate and support negotiations and implementation of partnership agreements, through research and analytical work.

As a consortium partner of the European Topic Centre on Biological Diversity, EFI contributed in 2007 to the biodiversity chapter of Europe's Environment – The Fourth Assessment. This work included an assessment of the state of forest biodiversity and current trends.

A total of 39 research projects and development projects/actions were run at EFI during 2007. A full list of these projects is presented in a supplement to this report.



Elena Gorriz and Sabaheta Ramcilovic



Jussi Lounasvuori, Jade Saunders, Ralph Ridder and Niina Jokinen



Hans Verkerk and Marcus Lindner



Robert Mavsar, Mercedes Rois and Marc Palahí

## NETWORKING

**EFI is a network organisation that strives to bring together and optimise the various forest research capacities around Europe. We also facilitate co-operation with other relevant fields of research.**

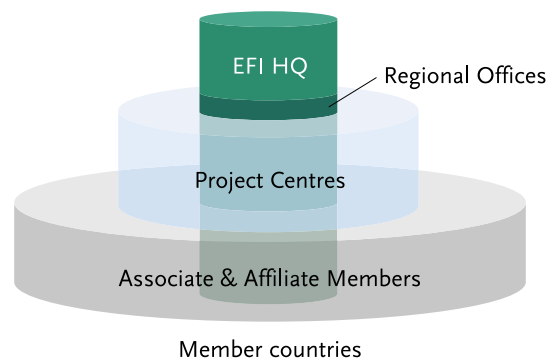
At our Annual Conference in 2007 EFI's Associate Member organisations confirmed a new element to EFI's organisation in the shape of new Regional Offices. These offices will provide EFI with a truly pan-European dimension and enhanced opportunities for funding our core activities.

The Regional Office EFIMED was launched in June in Barcelona, to cover an expanded network throughout the Mediterranean region, including the Middle East and North Africa. EFI's Project Centres will maintain their vital role and continue to expand their own networks, complementing EFI's core activities with their respective thematic focuses and networks.

The EFI Annual Conference was held on 5 September in Poland, hosted by the Warsaw Agricultural University. A scientific seminar 'Forests and Forestry in the Context of Rural Development' was held in conjunction with the conference, also serving as the second European Congress of the International Union of Forest Research Organisations (IUFRO).

The Annual Conference is itself increasingly becoming a networking event in terms of its structure and content. A total of 116 EFI Associate and Affiliate Members and observers took part in the 2007 Annual Conference, and we expect a similarly high level of participation in 2008 in Orvieto, Italy.

EFI also acts as a secretariat for the joint meetings of National Forest Research Institutes. This series of biannual meetings was initiated in 2004, with EFI involved from the start facilitating networking between national institutes.



EFI provides a platform, an effective infrastructure and networking services to its Associate Members and the forest research community as whole.



2007 witnessed the launches of the Euro-forest portal, the Policy Brief publication series and the revamped EFI website.

## INFORMATION

**There is a great need around Europe for accurate scientifically based information on forests. We compile information on European forests and forestry and disseminate it among a wide range of target stakeholder groups.**

During 2007 at EFI we particularly improved our web-based information services. One highlight was the launch of our EUROFOREST Portal, a free and non-commercial service for anyone interested in information on forests and forestry. This portal meets the growing demand for better access to information on European forests and forestry in a user-friendly form. It contains a news section and a meta-database of web resources which can be browsed either by subject or by geographical area.

EFI's own website was also revamped to give it an improved structure and a more up-to-date design. Popular sections such as databases and publications, and news and events, have been grouped together and given greater prominence. The new organisations within the Institute, including the Regional Offices, are also better woven into the website.

EFI has also successfully launched a new Policy Briefs publication series to serve policy-makers. The first policy brief was titled 'Making European Forests Work for People and Nature'. Our information provision work included involvement in the organisation of 13 events ranging from project workshops and meetings to the EFI Annual Conference. The first EFIMED annual meeting, held in October, looked at Mediterranean forest ecosystems for non-timber goods and services.

---

EFI is the leading institution conducting and advocating forest research and facilitating forest research networking at the pan-European level.

EFI is an acknowledged provider of and a major contact point for unbiased, policy-relevant information on European forests and forestry.

---



EUROPEAN FOREST INSTITUTE

Torikatu 34 | 80100 Joensuu | FINLAND  
TEL: +358 10 773 4300 | FAX: +358 10 773 4377  
efisec@efi.int | www.efi.int