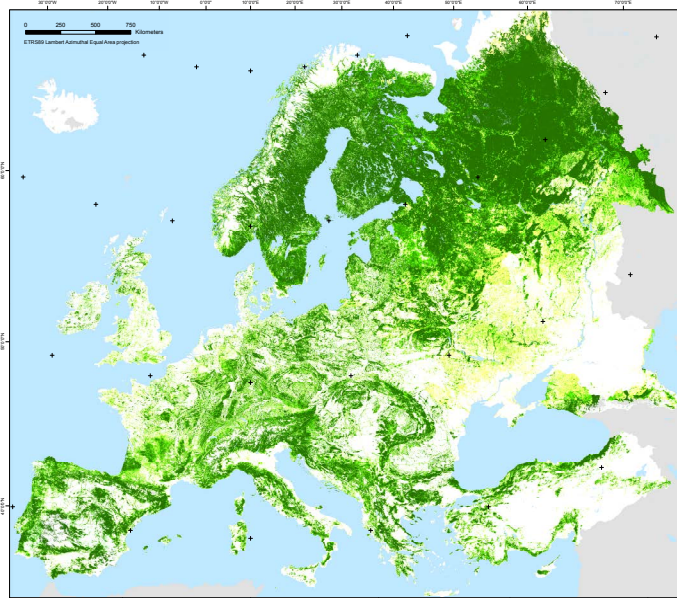
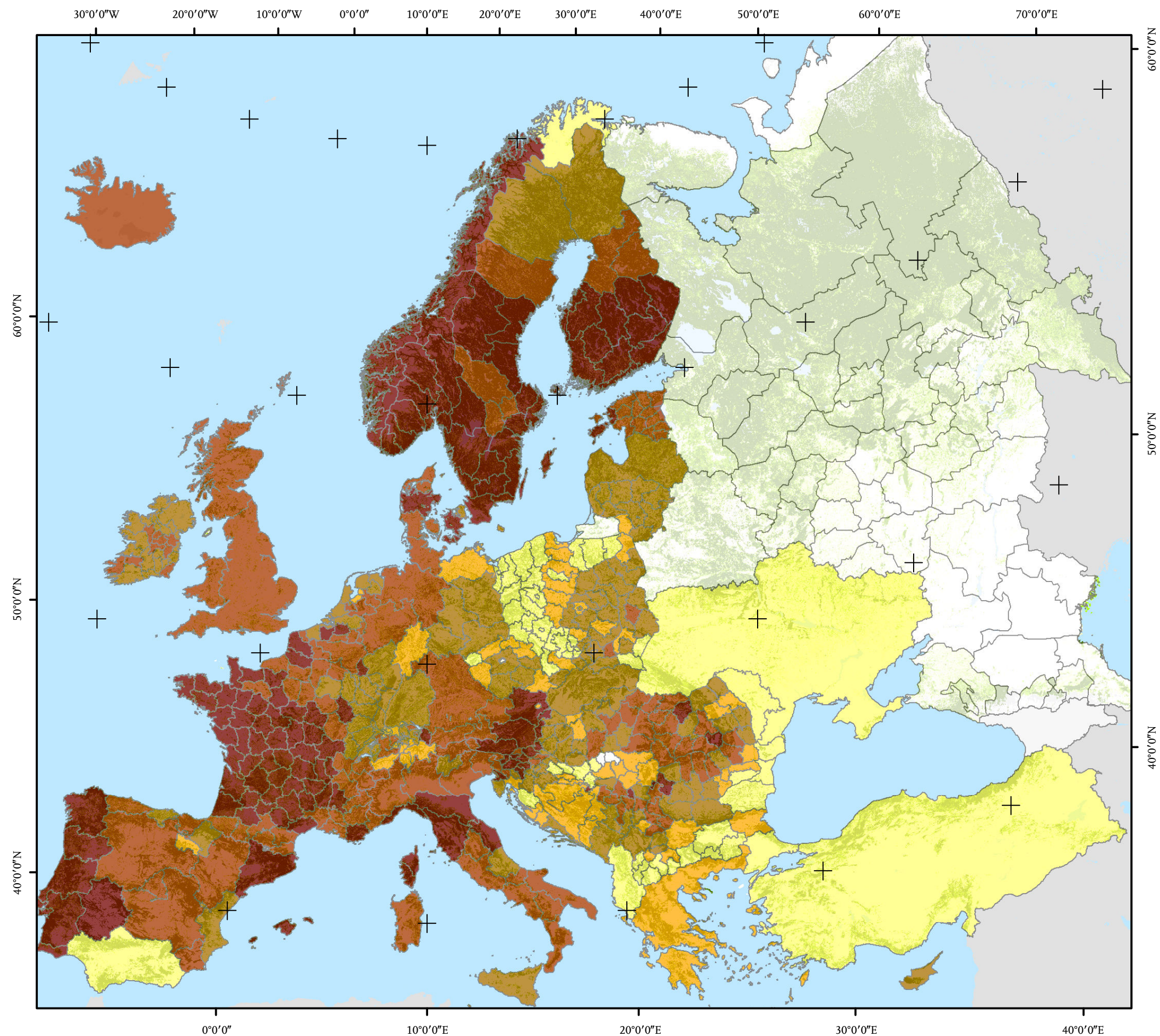


# PRIVATE FOREST OWNERSHIP MAP OF EUROPE



FOREST MAP OF EUROPE

## Recommended citation for the forest ownership map of Europe:

Pulla, P., Schuck, A., Verkerk, P. J., Lasserre, B., Marchetti, M. and Green, T. 2013. Mapping the distribution of forest ownership in Europe. EFI Technical Report 88. 92 p.

## Forest ownership data

Compiled from official national and international information sources on private, public and other forest ownerships (publications, websites and information portals)

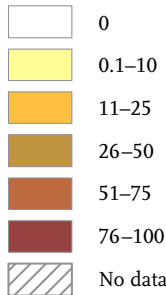
## Private ownership

Forest owned by individuals, families, communities, private co-operatives, corporations and other business entities, private religious and educational institutions, pension or investment funds, NGOs, nature conservation associations and other private institutions. (FAO 2010)

## References

FAO 2010. Global Forest Resources Assessment 2010. Terms and Definitions. Working Paper 144/E. 27 p. Food and Agriculture Organization of the United Nations, Rome.  
Gunia, K., Päivinen, R., Zudin, S. and Zudina, E. 2012. Forest map of Europe. European Forest Institute. [http://www.efi.int/portal/virtual\\_library/information\\_services/mapping\\_services/forest\\_map\\_of\\_europe/](http://www.efi.int/portal/virtual_library/information_services/mapping_services/forest_map_of_europe/)

Proportion of forest land in private ownership (%)



0 250 500 750 Kilometers

ETRS89 Lambert Azimuthal Equal Area projection

EUROPEAN FOREST INSTITUTE  
CENTRAL EUROPEAN REGIONAL OFFICE AND THE  
OBSERVATORY FOR EUROPEAN FORESTS – EFICENT-OFF

