



THINKFOREST

# Living with bark beetles: impacts, outlook and management options

## Presentation of a new EFI study

*Tomáš Hlásny*

*Czech University of Life Sciences Prague*

*ThinkForest, 4 April 2019, Hotel Grandium, Prague*

## AUTHORS

Tomáš Hlásny, Czech University of Life Sciences in Prague, the Czech Republic

Paal Krokene, Norwegian Institute of Bioeconomy Research, Norway

Andrew Liebhold, Czech University of Life Sciences in Prague, the Czech Republic

Claire Montagné-Huck, Université de Lorraine, Université de Strasbourg, AgroParisTech, CNRS, INRA, BETA, France

Jörg Müller, Julius-Maximilians-University Würzburg, Bavarian Forest National Park, Germany

Hua Qin, University of Missouri-Columbia, USA

Kenneth Raffa, University of Wisconsin – Madison, USA

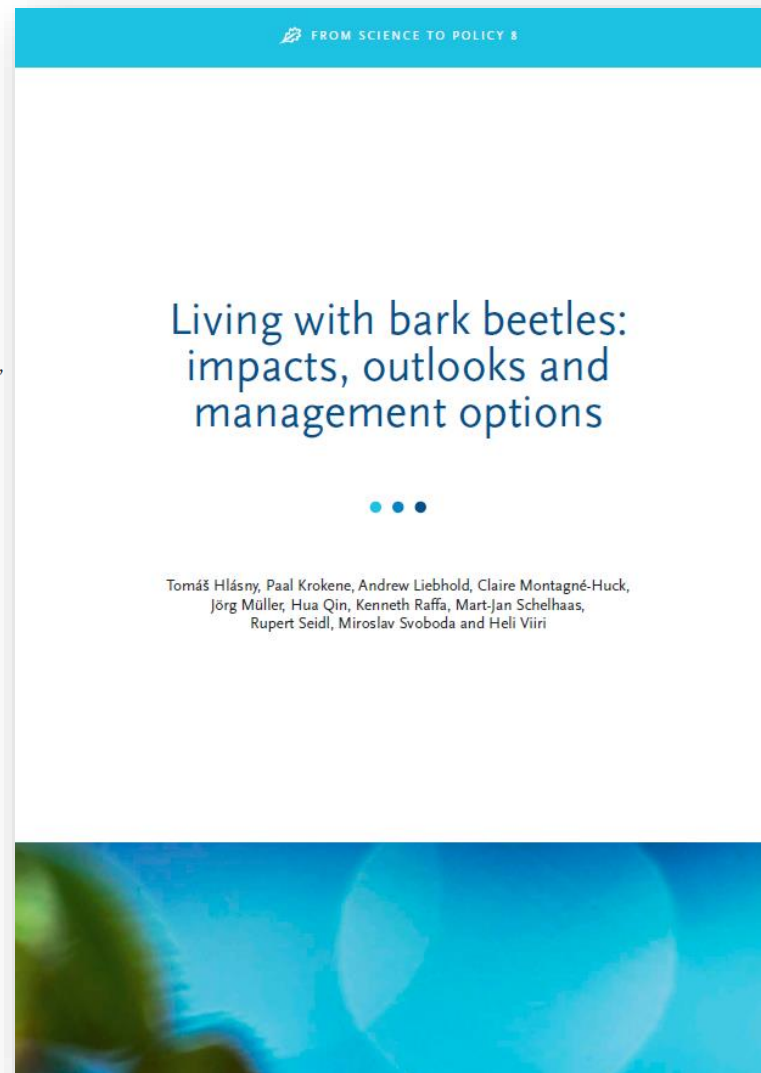
Mart-Jan Schelhaas, Wageningen Environmental Research, Wageningen University and Research, Netherlands

Rupert Seidl, University of Natural Resources and Life Sciences, Vienna, Austria

Miroslav Svoboda, Czech University of Life Sciences in Prague, the Czech Republic

Heli Viiri, Natural Resource Institute, Finland

[http://www.efi.int/sites/default/files/files/publication-bank/2019/efi\\_fstp\\_8\\_2019.pdf](http://www.efi.int/sites/default/files/files/publication-bank/2019/efi_fstp_8_2019.pdf)



# Bark beetles and their role in the forest

- Part of the forest contributing to proper ecosystems functioning, with positive effects on biodiversity or nutrient cycling
- Costly competitors for our desired forest resources and economic well-being



# Bark beetles and their outbreaks

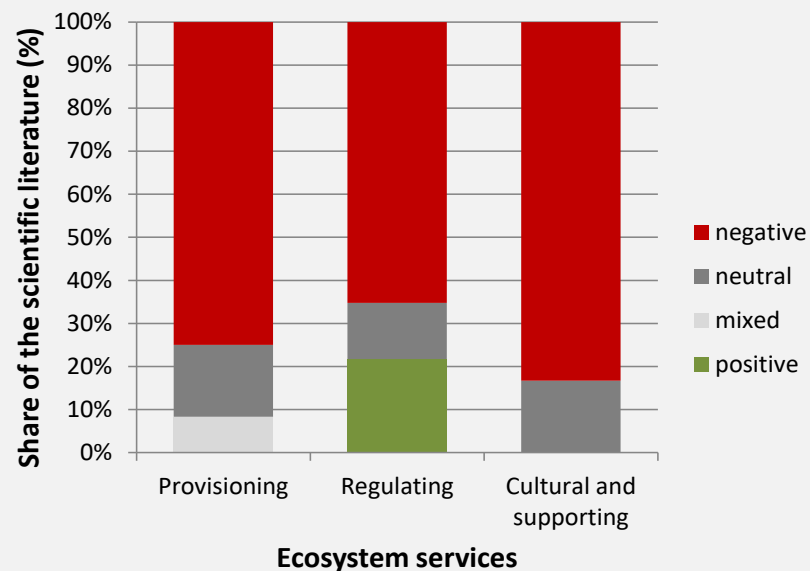
- Recent outbreaks have reached unprecedented intensities
- Year 2018 being a manifestation of „new“ outbreak dynamics
- At least 18 non-native species have become established in Europe
- Future outbreaks will be strongly amplified by climate change
- Will be reaching supranational scales and coming in waves synchronized by extreme weather
- Expanding to new territories
- Risk of „ecological surprises“ from bark beetles will increase

# Impacts of bark beetle outbreaks

- Ecosystem services – negative impacts dominate

- Economy – complex pattern of losers and winners with overall negative balance

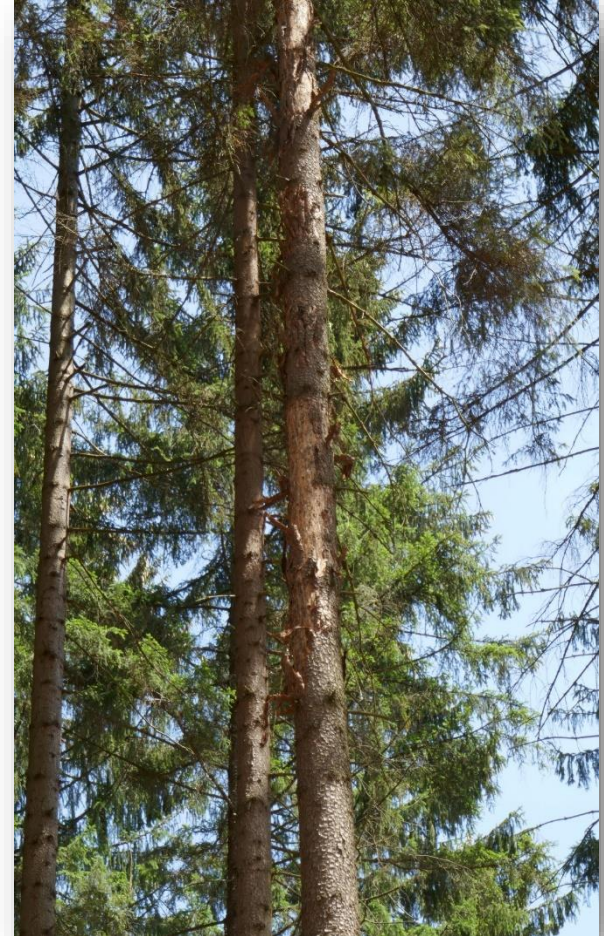
- Social – rather uncertain, with research lacking for Europe





# Notes on the current management

- Traditional outbreak management measures are losing efficiency when outbreaks are large and climate warmer
- Efficiency, economy and collateral impacts of broadly applied management approaches are often not known or not considered in management decisions
- Insufficient transnational collaboration, data sharing, and monitoring reduce our ability to take efficient actions



# How can we manage future outbreaks?



## Preparedness

- Improved education and training
- Strengthened collaboration
- Improved knowledge transfer
- Strengthened dialogue

- Improved forest roads
- Established monitoring programmes
- Increased capacity of nurseries
- Increased timber storage capacities

## Prevention

- Establishing early warning systems
- Improving landscape configuration
- Preventing invasions
- Reducing rotation
- Conducting proper forest sanitation

## Response

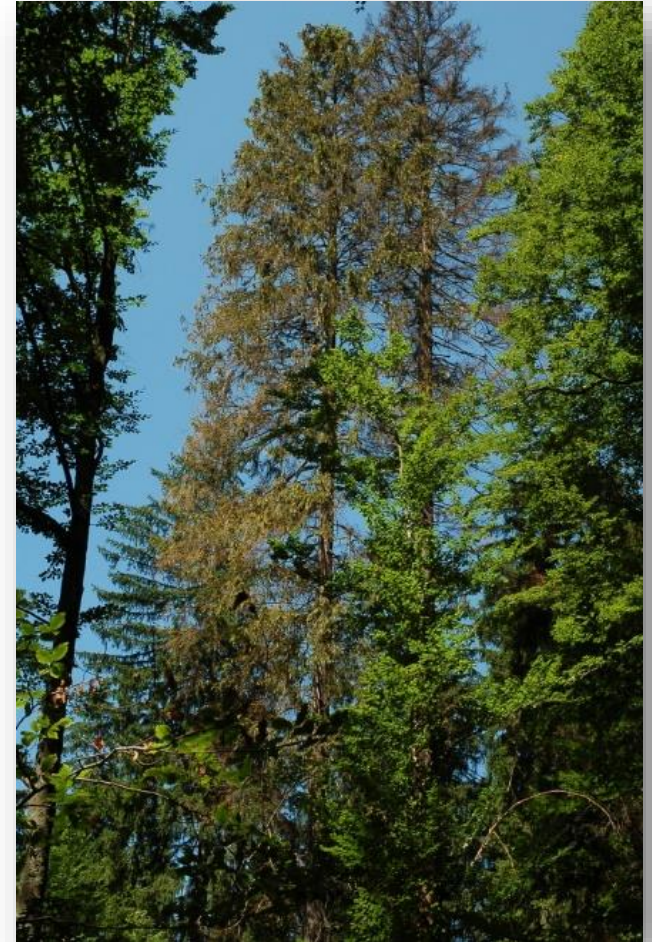
- Increasing salvaging efficiency
- Reducing planned harvests
- Subsidizing response measures
- Improving communication

## Recovery

- Supporting forest structure and diversity
- Utilising advanced regeneration
- Integrating biological legacies
- Planting disturbed sites
- Protecting regeneration

# Selected recommendations

- Utilize „**integrated disturbance management**“ that combines monitoring, sanitation, silviculture and non-intervention rather than „forest protection“
- **Revise current interpretation** of sanitation and salvage logging, and beetle trapping in view of the emerging scientific understanding of their effectiveness, economy and collateral impacts
- **Relax legal constraints** that hamper more comprehensive disturbance management, e.g. the requirement on fast regeneration after disturbance or insufficient flexibility in rotation period





## Recommendations ctnd.

- Extend disturbance management from tree- and stand-scale to **landscape scale**, which is the scale of outbreaks
- Better balance between **risk reduction** approaches, and approaches fostering **forest resilience**
- Actively **exploit post-disturbance conditions** to create climate change-adapted and resilient forests





THINKFOREST

# Living with bark beetles: impacts, outlook and management options

## Presentation of a new EFI study

*Tomáš Hlásny*

*Czech University of Life Sciences Prague*

*ThinkForest, 4 April 2019, Hotel Grandium, Prague*