



S Y K E

25

VUOTTA ÅR YEARS

# **Comment on European Forest Policy Post-2020: a new EFI report**

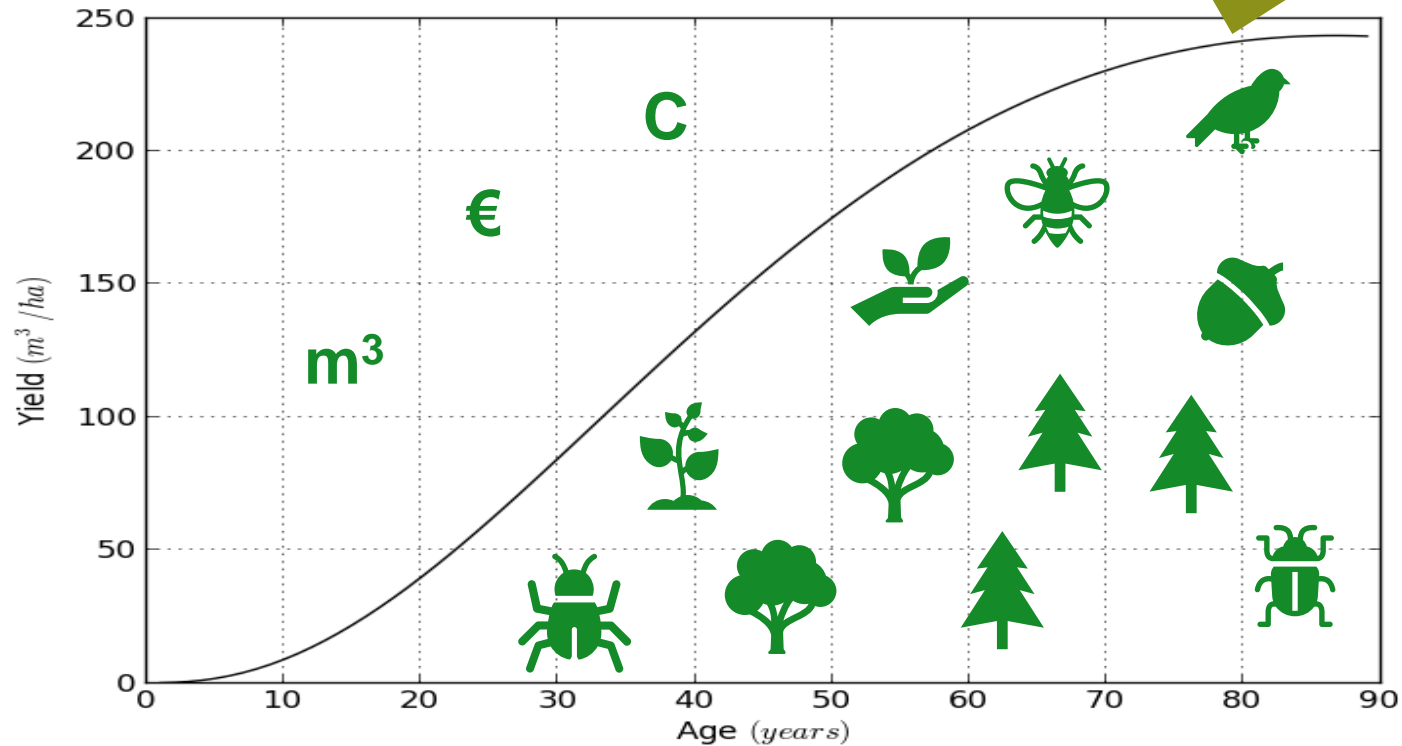
**Eeva Primmer**

Finnish Environment Institute

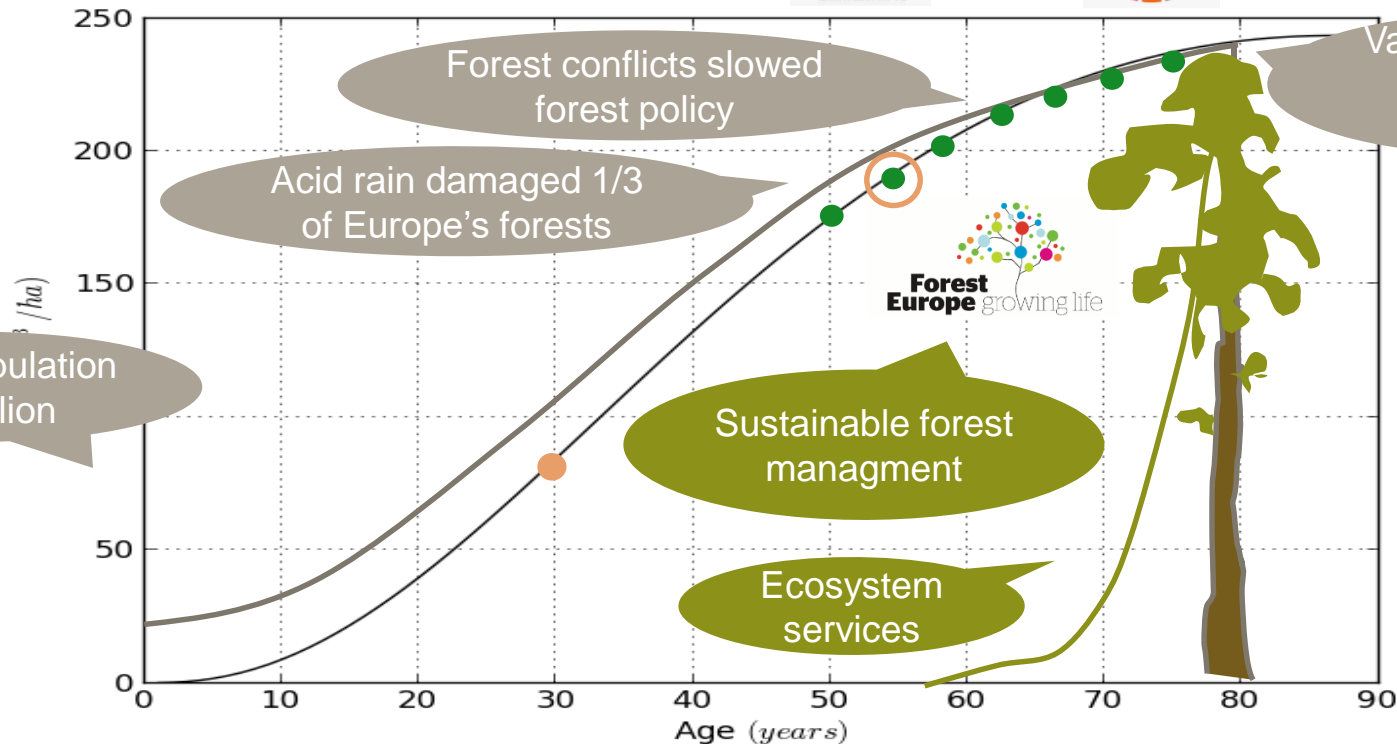
European Forest Policy Post-2020 webinar 22 September 2020

[@EevaPrimmer](https://twitter.com/EevaPrimmer)

# Forests: biomass, ecosystem, benefits



# Take a tree's viewpoint looking back at its life

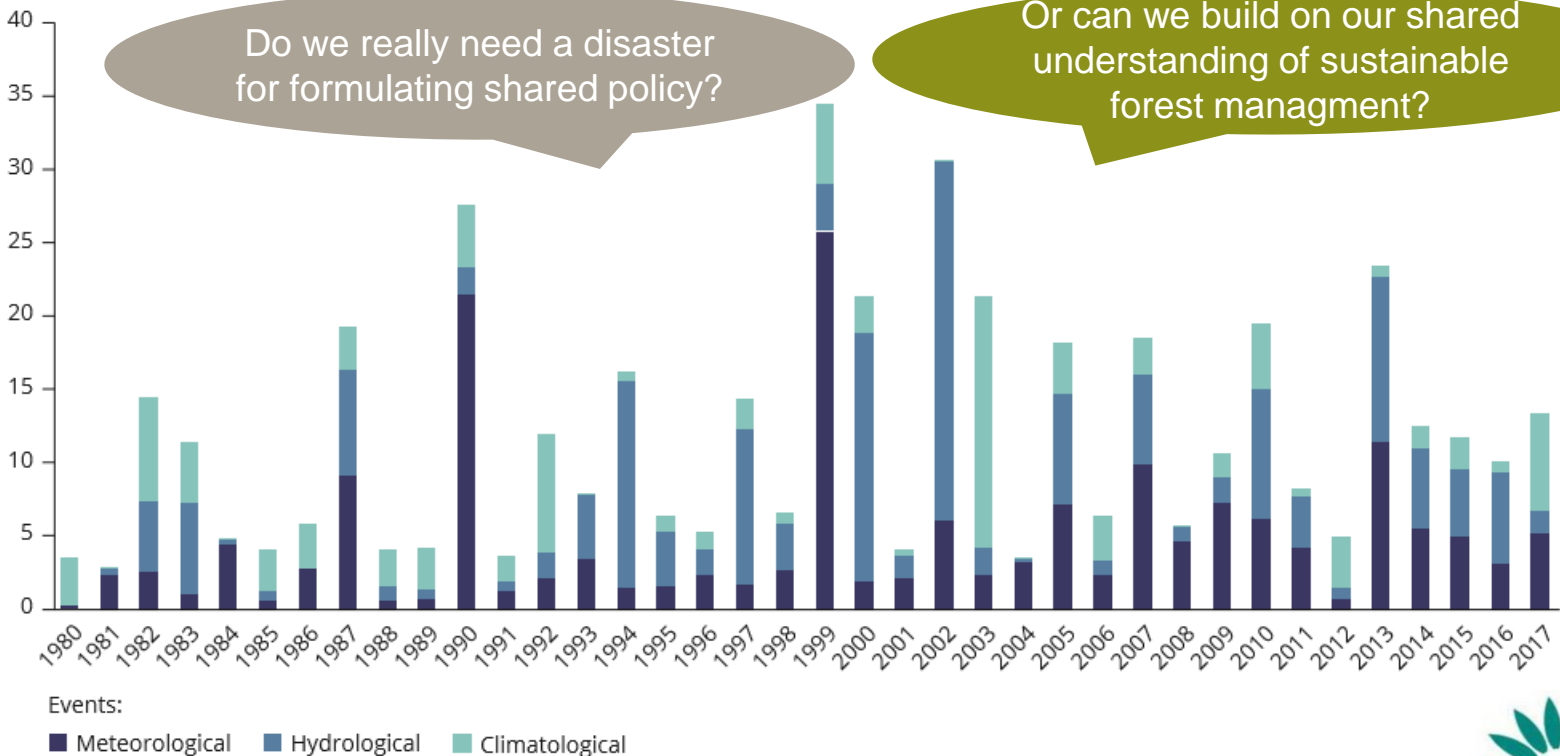






**FIGURE 7.7 Economic damage caused by climate-related extreme events in EEA member countries**

Billion EUR (2017 values)



**Note:** Meteorological events: storms; hydrological events: floods and mass movement; climatological events: cold waves, heat waves, droughts, forest fires.

**Source:** Adapted from EEA (2019b), NatCatSERVICE provided by Munich Re.





**Thank you!**

@EevaPrimmer