



Integral Wildfire Prevention Teams (EPRIF) an(d) inter-institutional collaboration for wildfire prevention in Spain

Elena Hernandez. Spanish Forest Fire Service

ASSUMPTIONS - FACTS

Wildfires exist (past, present and future)

Wildfires have a social component

Fire is a vegetation management tool

Resilient landscapes / territories

PEOPLE

- Rural population – *wildfire causes*
- General population / tourists (national and international) – *civil protection*
- Schoolchildren - *future*



Catastrophic wildfires (events)

Over 100 active wildfires in a day for
several days

Asturias March 2019

Galicia October 2017

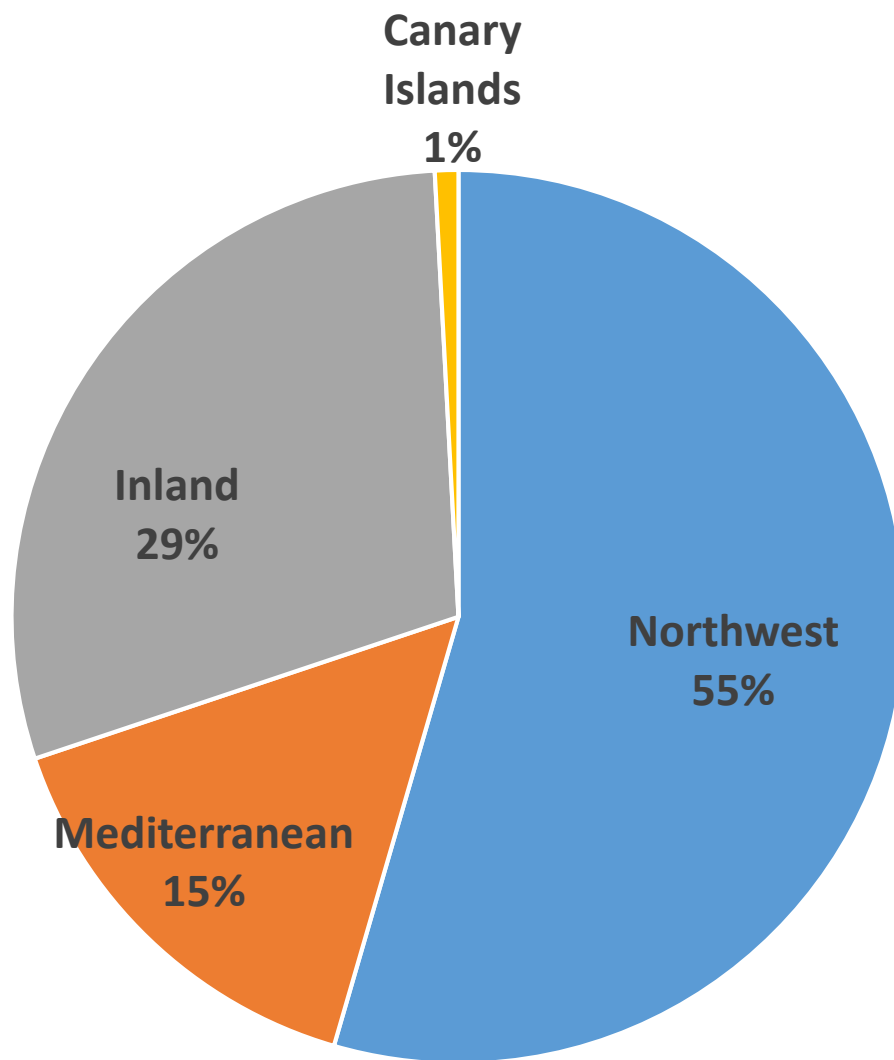


EPRIF program based on wildfire causes and motivations

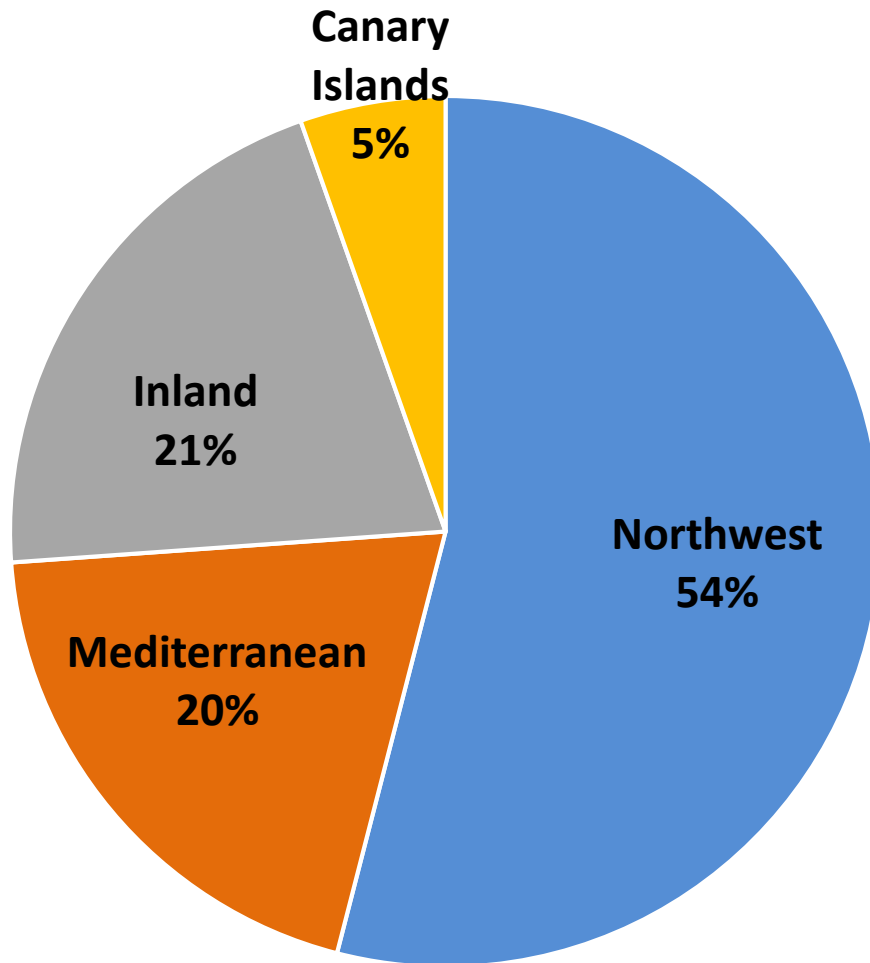
DATA → national wildfire statistics

PEOPLE → rural population

**NUMBER OF
FIRES
last decade**



**SURFACE
AFFECTED
last decade**

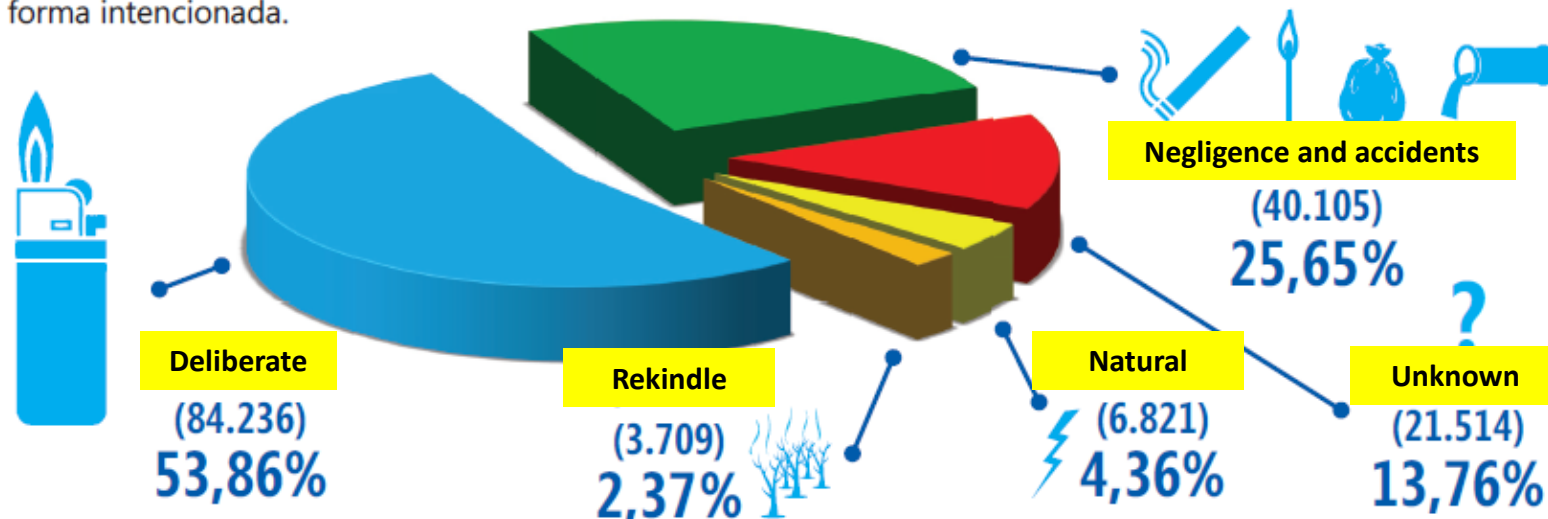




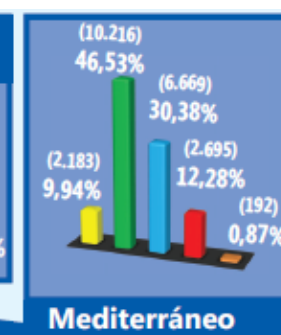
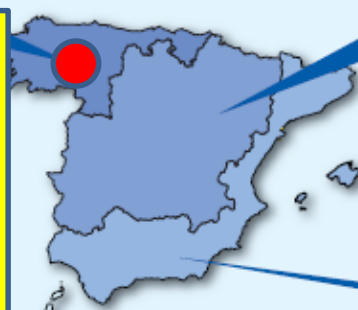
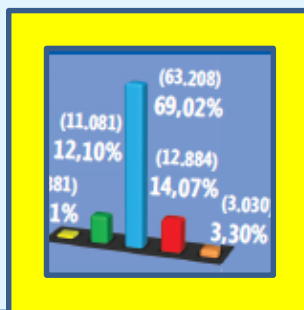
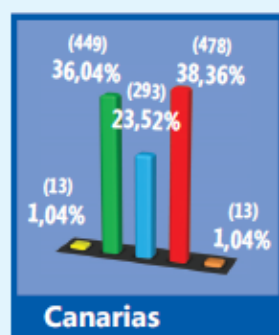
WILDFIRE CAUSES IN SPAIN

¿Cuáles son las causas?

El 96% de los siniestros están causados por actividades humanas, ya sea por negligencias y accidentes o de forma intencionada.



CAUSAS DE INCENDIOS SEGÚN DISTRIBUCIÓN GEOGRÁFICA

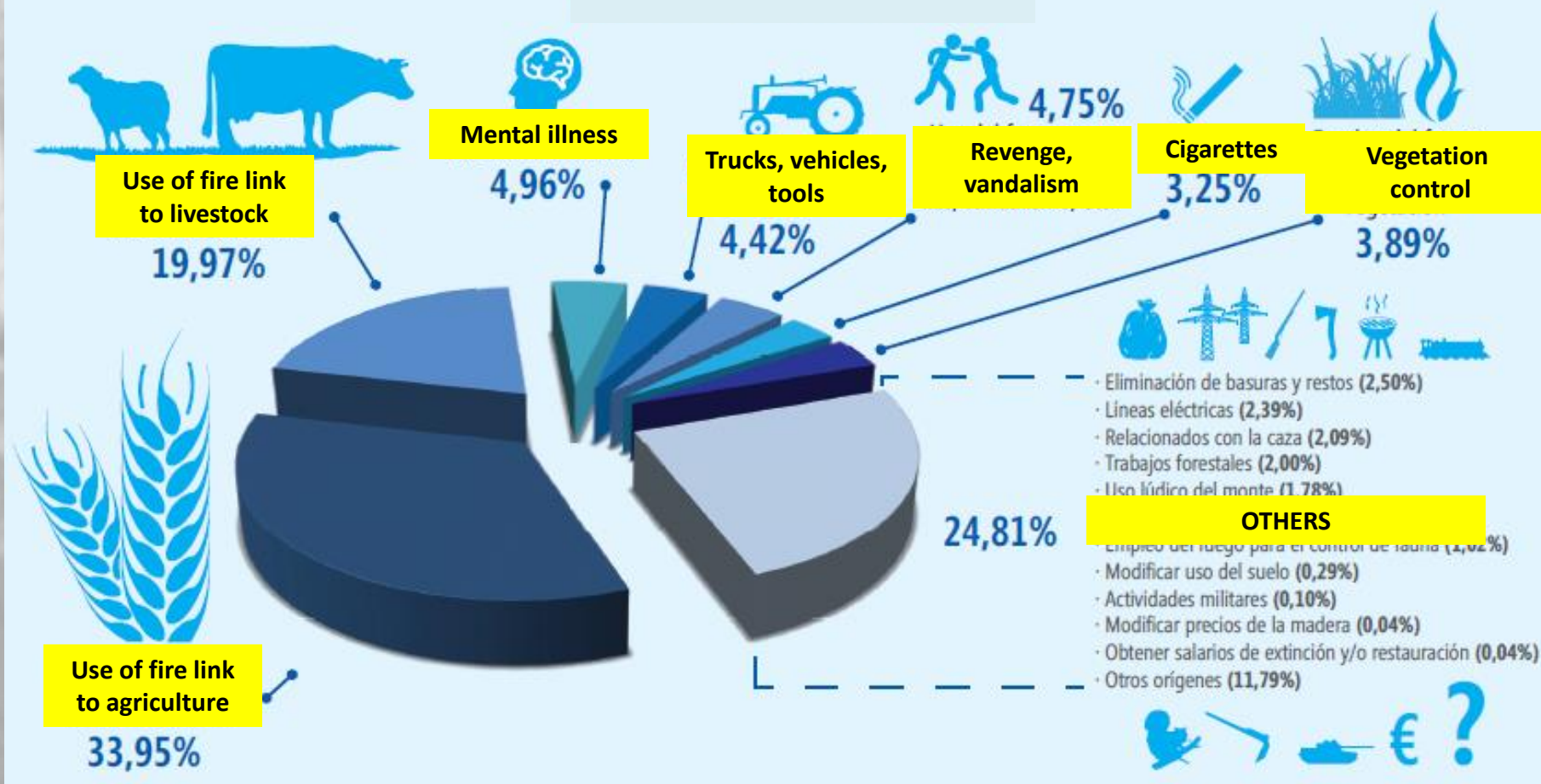




WILDFIRE SOCIAL MOTIVATIONS IN SPAIN

Motivaciones sociales que originan los incendios

Negligence and deliberate





INTEGRAL PREVENTION TEAMS (EPRIF)

- Created in 1999 with the aim of working on the territories on **wildfire causes**, acting directly on **adult rural population**.
- EPRIF teams work from **November to April** and collaborate with regional governments while active.
- **18 EPRIF teams** composed by 2-4 experts in fire management, use of fire, fire ecology, prevention and suppression. With an extensive knowledge of their territories.



GOBIERNO
DE ESPAÑA

MINISTERIO
DE AGRICULTURA, PESCA
Y ALIMENTACIÓN

EPRIF 1999 -2019

EPRIF LOCATIONS

DISTRIBUCIÓN DE MEDIOS DE PREVENCIÓN DEL MINISTERIO

10 OF 18 IN THE NORTHWEST



ACTING DIRECTLY ON ADULT RURAL POPULATION RECONCILING INTERESTS

➤ **PRESCRIBED/CONTROLLED
BURNINGS**



➤ **TRAINING, MEETINGS,
AWARENESS**

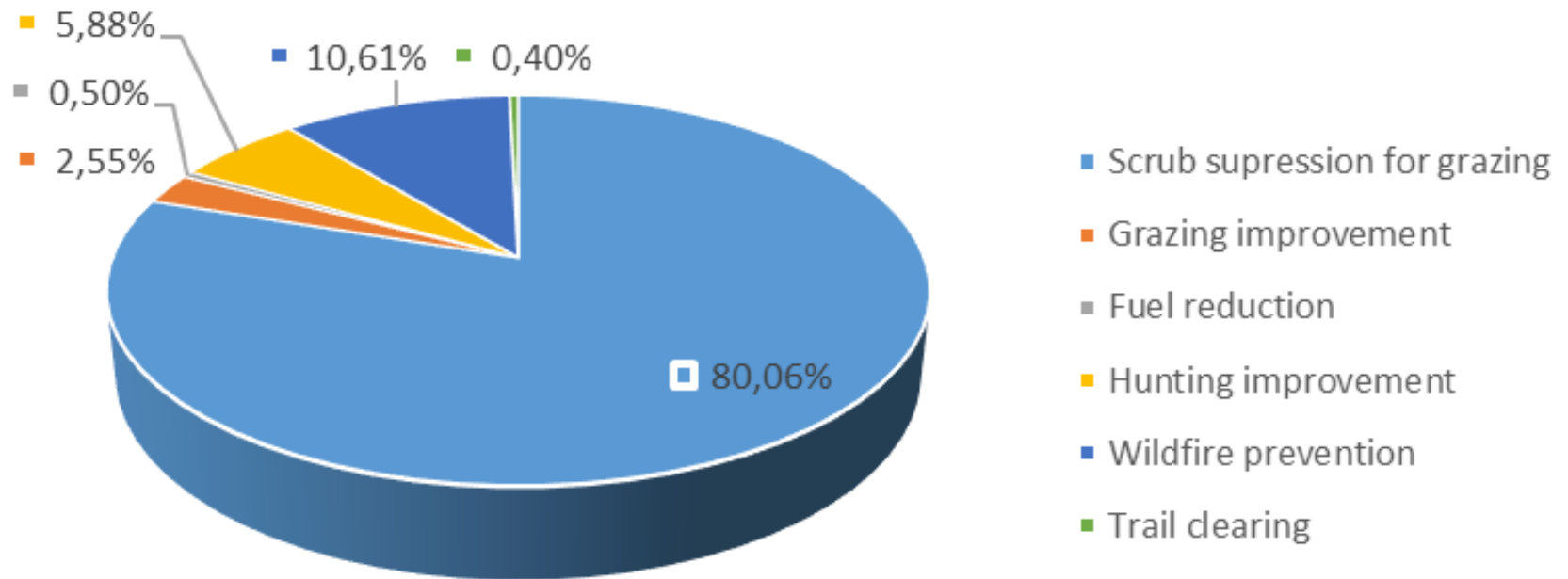


➤ **CLEARINGS**



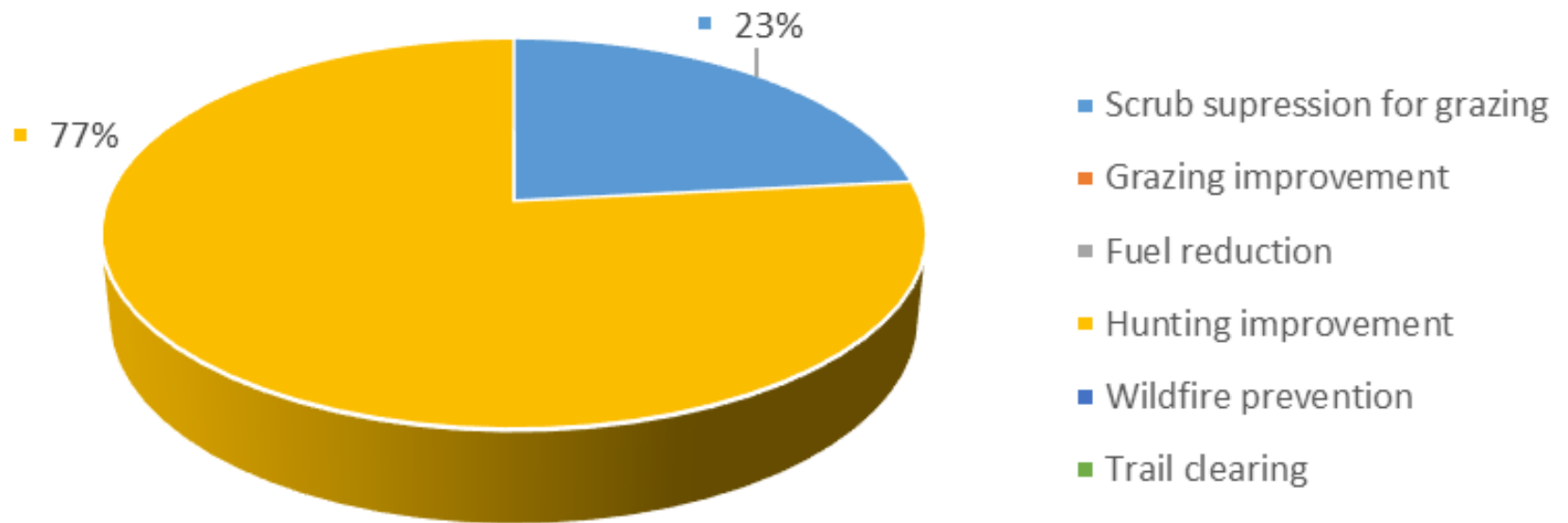
PRESCRIBED AND CONTROLLED BURNS

OBJETIVES

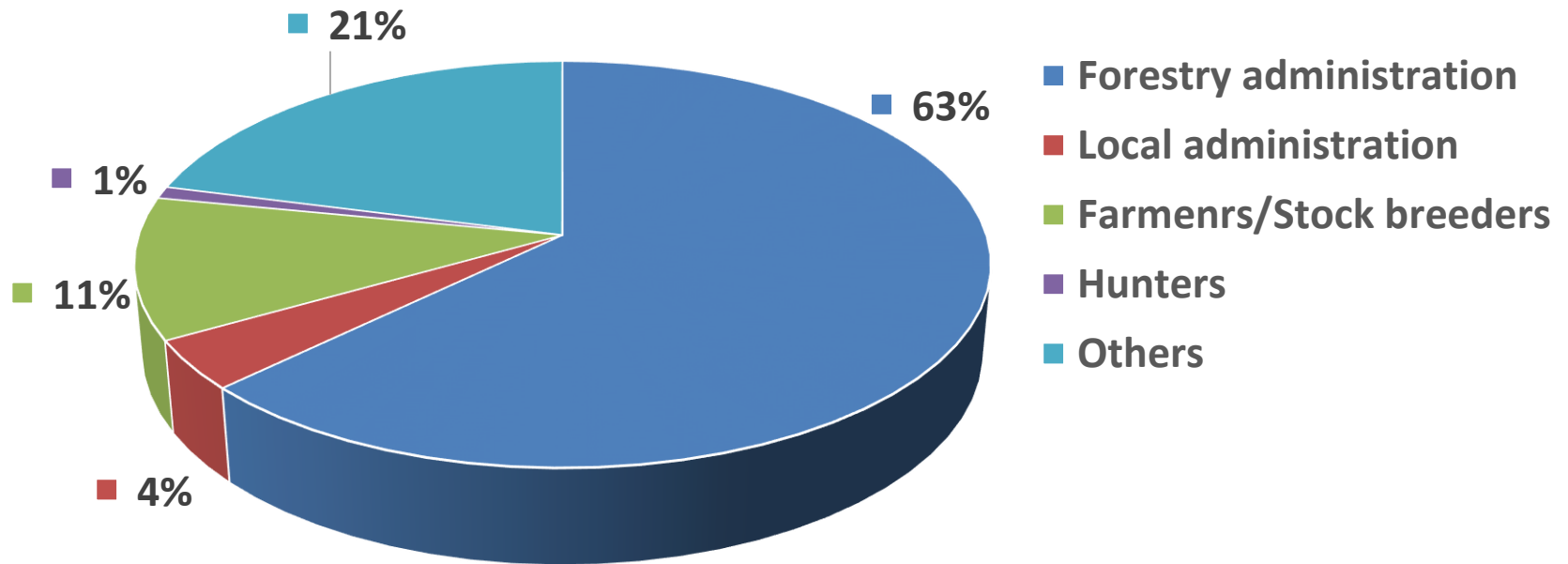


CLEARINGS

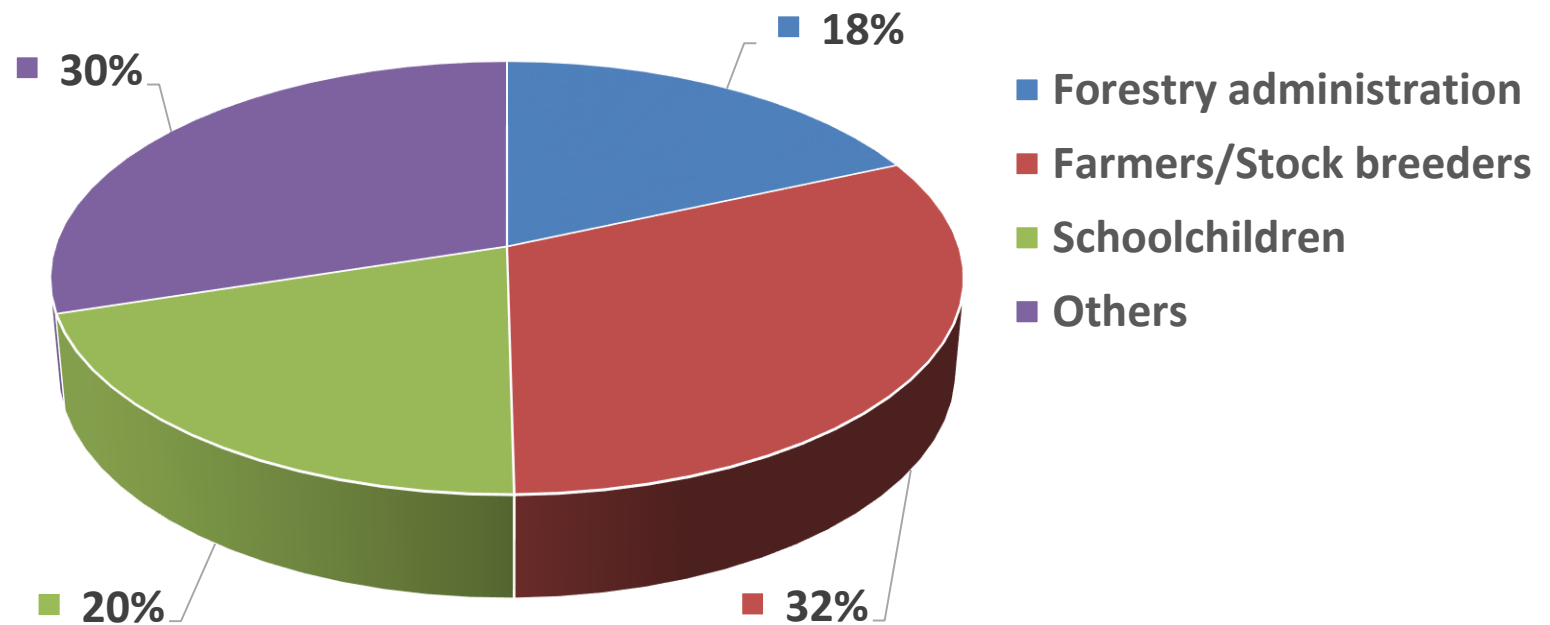
OBJECTIVES



MEETINGS WITH STAKEHOLDERS



TRAINING/AWARENESS WITH STAKEHOLDERS



RESULTS

2017 – Study on 3 EPRIF (Navarra, Cantabria, Asturias)

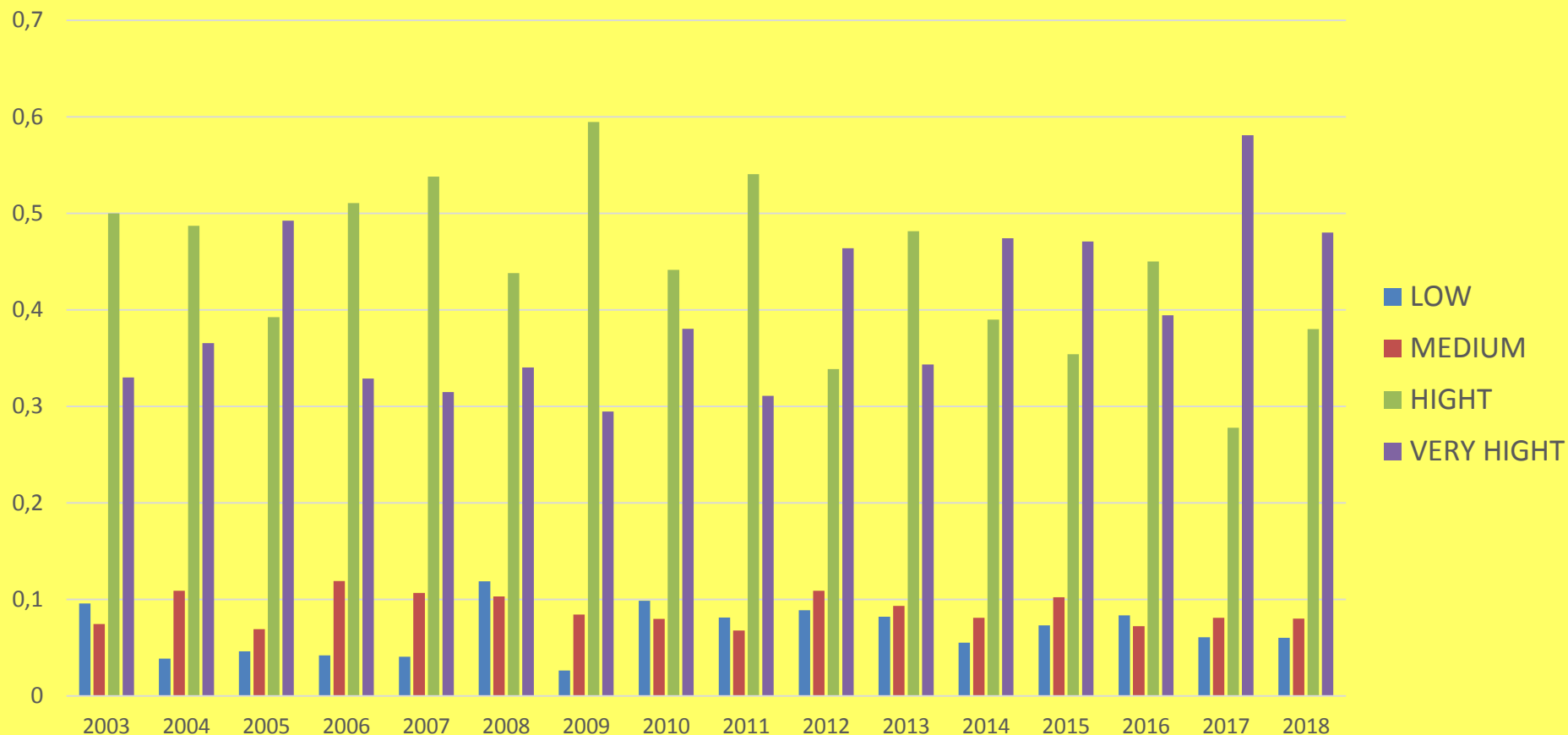
- Not conclusive on the incidence of the EPRIF teams in the wildfire problem
- Prescribed burns planning is a long process
- EPRIF composition and work period limits its capacities (low number of hectares burnt vs hectares requested)
- Positive tendency on negligence use of fire and modification of fire use patterns harmful for the territories

2008 – Study on soil affection after the use of prescribed burns

- Low incidence on nutrients and microbial and enzymatic activity under appropriate conditions



Satisfaction degree. Prescribed burns



CHALLENGES

- BURN PRESCRIPTIONS LINKED TO METEOROLOGY CONDITIONS
- SATISFY ALL BURN REQUESTS
1 EPRIF area of work : 104 plots – 1200 has
- BURN EXECUTION SUPPORT (aditional teams)
- TRANSMISION OF EPRIF ROLE (NEUTRAL – FACILITATOR)



FUTURE

- **PROFESIONALIZATION**
- **ANNUAL CONTINUITY**
- **DEVELOPMENT OF REGIONAL GOVERNMENTS
TEAMS**
- **NEW FUNCTIONS SUCH AS PREVENTION BASED
ON THE ANALYSIS OF STRATEGIC
MANAGEMENT AREAS**



GOBIERNO
DE ESPAÑA

MINISTERIO
DE AGRICULTURA, PESCA
Y ALIMENTACIÓN

EPRIF 1999 -2019

THANK YOU FOR YOUR ATTENTION

ehparedes@mapa.es